



PARAMEDICAL®

AFFORDABLE DIAGNOSTIC
SOLUTIONS FROM 1996



PRODUCT
CATALOGUE
2 0 2 0

PKL® PPC

INDICE

Hematology Analyzers	1
Urine Analyzers	5
Clinical Chemistry Analyzers	9
Electrolyte products	13
Coagulation products	14
Microplate reader & washer products	16
Specific Protein Analyzer, ESR Analyzer, Blood Gas Analyzer	18
Electrophoresis products	20
Hba1c products	21
Centrifuges	23
Cabinets	32
Incubators and ovens	39
Microscopes	43
-86° Freezer	48
Small laboratory instruments	50
Blood Bank instruments line	71
POCT	81
Medical electronic products	83
Reagents/consumables	84
Clinical chemistry	86
Stains & ancillary	91
Evacuated tubes	92
Lab benches	94
Veterinary Instruments	96

HEMATOLOGY ANALYZERS

PKL PPC 1100H

5-Part-Diff Hematology Analyzer

- 110T/H
- Reticulocyte Test: RETIC_ABS, RETIC%,IRF
- 34 parameters, 2 histograms,2 scatter grams and two 3D stereograms
- Flow Cytometry (FCM) + Multi Angle Scatter Separation (MASS)
- Auto loader with "120 sample storage capacity
- The combination of WIC and WOC for WBC counting
- On board storage capacity of 200,000 samples with all grams
- Built-in bar code reader
- LIS and HIS available with HL7 protocol



PKL PPC 1200H

5-Part-Diff Hematology Analyzer

- 60T/H
- Reticulocyte Test: RETIC_ABS, RETIC%,IRF
- 34 parameters, 2 histograms, 2 scatter grams and two 3D stereograms
- Flow Cytometry (FCM) + Multi Angle Scatter Separation (MASS)
- Auto loader with 50 sample storage capacity
- The combination of WIC and WOC for WBC counting
- On board storage capacity of 200,000 samples with all grams
- Built-in bar code reader
- LIS and HIS available with HL7 protocol



PKL PPC 1040H

5-Part-Diff Hematology Analyzer

- 60T/H
- Reticulocyte Test: RETIC_ABS, RETIC%,IRF
- 34 parameters, 2 histograms, 2 scatter grams and two 3D stereograms
- Flow Cytometry (FCM) + Multi Angle Scatter Separation (MASS)
- The combination of WIC and WOC for WBC counting
- On board storage capacity of 200,000 samples with all grams
- LIS and HIS available with HL7 protocol





PKL PPC 1150H **5-Part-Diff Hematology Analyzer**

- 60T/H
- Reticulocyte Test: RETIC_ABS, RETIC%, IRF
- 34 parameters, 2 histograms, 2 scatter grams
- Flow Cytometry (FCM) + Multi Angle Scatter Separation (MASS)
- The combination of WIC and WOC for WBC counting
- On board storage capacity of 200,000 samples with all grams
- Support variety of external color printers
- LIS and HIS available with HL7 protocol



PKL PPC 610H

3-Part-Diff Hematology Analyzer

- 60T/H, 21 parameters and 3 histograms
- 10,4 inch color LCD display & Linux operation system
- More than 100,000 data storage capacity
- Excellent data management
- Support USB data backup & system, less maintenance
- Support LIS and HIS with HI7 protocol
- Touch screen optional



OUR FULLY AUTOMATIC URINALYSIS SYSTEM

With more than 20 years experience in urinalysis product development; Fully automatic urinalysis system consists of PKL PPC 330, PKL PPC 360 connecting bridge, work station; Proficiency and efficiency in urinalysis in the most convenient way; Adopting the most advanced image capture and multi-core parallel processing technique.

URINE ANALYZERS PKL PPC 330+360

PKL PPC 330

Automatic Urine Analyzer

- Up to 300T/H
- Up to 14 parameters including Cr, MA, Ca, VitC
- 8 inch color display with touch screen
- Integrated barcode reader for sample
- More than 100,000 data memory capacity
- Accurate sample quantitative drop system
- Stable strip reaction time control
- COM and LAN port for LIS and HIS communication



PKL PPC 360

Automatic Urine Sediment Analyzer

- Up to 70-100T/H
- 11 auto-recognition parameters, RBC, WBC, HYA, GRAN, SQEP, NSE, CAOX, URIC, BACT, YST, MUCS and more parameters can be manually classified
- Three counting channels in flow cell
- Dual real microscopes 10X and 40X objective lenses
- Full view of raw pictures traceable
- Optional sample mixing function before aspirating for ultimate results
- No preliminary, no centrifugation, no additional chemical staining solution



Urine System Fully Automatic

PKL PPC 330 + PKL PPC 360

PKL PPC 380

Automatic Urine Sediment Analyzer

- Automatic recognition of digital images
- auto-particle recognition: R BC,WBC, SQEP(squamous epithelial cells), NSE(non-squamous epithelial cells), HYA(cast),UNCC, CAOX (calcium oxalate crystal), BACT(bacteria), yeast, and etc.
- RBC phase detection
- Receive PKL PPC series urine dry chemistry analyzer's test data
- Throughput:more than 50 samples/hour
- Sample:native urine samples or urine sediment samples
- Interfaces: RS-232 SERIAL PORT, USB, TCP / IP Ethernet



PKL PPC 160

Urine Analyzer

- Touch screen / Keypad
- FDA approved
- Excellent throughput, up to 500T/H
- Up to 14 parameters including Cr, MA, Ca, VitC
- High automation, continuous urine strip loading
- Easy maintenance design for daily cleaning
- Barcode reader optional
- URIN-10K, URIN-11K and URIN-14K control available



PKL PPC 105

Urine Analyzer

- Up to 120T/H and 11 parameters available
- User-friendly operation
- Friendly operation with large LCD screen
- Barcode reader optional
- URIN-10K & URIN-11K and URIN-14K control available



PKL PPC 100

Urine Analyzer

- Up to 120T/H and 11 parameters available
- FDA approved
- Portable
- Barcode reader optional
- URIN-10K, URIN-11K and URIN-14K control available





CLINICAL CHEMISTRY ANALYZERS

PKL PPC 110

Semi Automatic Chemistry Analyzer

- High-quality filter & close optical system
- Easy keypad operation
- Quartz cuvette with 25't, 30't, 37't and room temperature controllable
- Long-life halogen lamp
- Easy maintenance



PKL PPC 115

Semi Automatic Chemistry Analyzer

- Friendly operation with 7 inch color touch screen
- Sophisticated Software, large memory capacity
- High quality filters with 8 wavelengths realizing real dual wavelengths detection
- Convenient maintenance design
- 8 inner incubation positions
- Large memory capacity 30,000 results storage



PKL PPC 218

Semi Automatic Chemistry Analyzer

- Direct access to more than 200 tests through test keys
- Maintenance free peristaltic pump
- Unique circuitry for long lamp life
- Triple cuvette system: 18 μ l flow cell, 10 mm square cuvette, round cuvette.
- Real time graph with online reading Multi standard calibration & memory Automatic calibration against standard
- Displays actual temperature on screen
- Levey jennings and standard deviation graphs
- Sample carry over prevention facility
- Robust system with built in stabilizer Patient report with PID & name
- User friendly software USB interface



PKL PPC 125

Automatic Chemistry Analyzer

- Carry-on baggage size
- End point $CV \leq 0.5\%$; Kinetic $CV \leq 1\%$; two points $CV \leq 1.5\%$
- Lower failure rate; easy maintenance
- 9 Wavelengths
- Barcode reader (optional)
- Water cycle cooling
- Auto warm water washing
- Immunology items
- Powerful software
- Support lis interface
- 200 tests/hour



PKL PPC 200U

Automatic Chemistry Analyzer

- Random Access, constant 200 tests/hour
- 24 hour non-stop cooling system to ensure reagent at 2-8°C
- Durable ceramic syringes to ensure accuracy & precision
- High accurate optical system
- Collision protection in both vertical and horizontal directions, stop & alarm automatically once touching barrier, not affect former tests
- Automatic eligible cuvettes detection & selection
- Select best test point by reaction curve, create new factor automatically
- Support LIS interface



PKL PPC 300N

Automatic Chemistry Analyzer

- Random access, 330 T/H, 575T/H with ISE (optional)
- 90 reaction positions, 60 reagent positions, 71 sample positions, including detergent, standard, QC and STAT positions
- Durable ceramic syringes, 1 sample probe, 1 reagent probe, 1 high-performance stirrer
- 24 hours non-stop cooling system to keep the reagent at 2-8°C
- Fully sealed high resolution filter optical system with strong intensity halogen lamp
- Air bath heating incubation system
- Bi-directional LIS/HIS
- Probe & washing arm collision protection



PKL PPC 400N **Automatic Chemistry Analyzer**

- Random Access, Constant speed
420 tests/hour, 600 tests/hour with ISE (optional)
- Dual-unattached durable ceramic syringes
- Unattached probe, high-performance mixer
- Water cycle refrigeration system
- 4 hour non-stop water cycle cooling system to ensure reagents at 2-8°C
- Collision protection in both vertical and horizontal directions, stop & alarm automatically once touching barrier, not affect former tests
- Automatic eligible cuvettes detection & selection
- Select best test point by reaction curve, create new factor automatically
- Support LIS interface



PKL PPC 700 **Automatic Chemistry Analyzer**

- Random Access, constant speed 640T/h, 1000 T/H with ISE (optional)
- High accuracy grating optical system
- Durable ceramic syringes, 4 unattached probes, 2 high-performance mixers
- 24 hours non-stop water cycle cooling system to keep the reagent at 2-8°C
- Metal solid heating for the 37°C incubation
- Support LIS interface
- Barcode



ELECTROLYTE PRODUCTS

PKL PPC 192PLUS

Electrolyte Analyzer

- Test 5 parameters with 45 seconds:
K+, Na+, Cl-, iCa²⁺, pH + 2 calculated
nCA²⁺, TCa²⁺ , only use 100ul sample
- Individual reagent optional, cost-effective
- Friendly operation with touch screen
- Auto-sampling tray (25positions) available
- Barcode scanner and bluetooth
- Intelligent bubble detection



PKL PPC 192

Electrolyte Analyzer

- Test 6 parameters with 45 seconds:
K+, Na+, Cl-, iCa²⁺, pH, TCO₂ + 3 calculated
nCA²⁺, TCa²⁺, AG , only use 100ul sample
- Individual reagent optional, cost-effective
- Friendly operation with touch screen
- Auto-sampling tray (25positions) available
- Barcode scanner and bluetooth
- Intelligent bubble detection



COAGULATION PRODUCTS

PKL PPC 120/170

Coagulation Meter

- 2 channels / 4 channels optional
- 16 samples positions,
4 reagent positions
- High-quality sample pipettor
- Advanced dual-magnetic circuit bead method
- Low reagent consumption



PKL PPC 175

Fully Automatic Coagulation Analyzer

- 4 items: PT, APTT, TT, FIB
- Throughput: 140
- 5 Sample positions
- 6 refrigerated reagent positions
- STAT Function
- Support LIS software



PKL PPC 175 PLUS

Fully Automatic Coagulation Analyzer

- 6 items: PT, APTT, TT, FIB, DD, FDP
- Throughput: 160
- 6 Sample position
- 11 refrigerated reagent positions
- STAT Function
- Support LIS software



PKL PPC 177

Fully Automatic Coagulation Analyzer

- Fully automatic, improve working efficiency.
- Complete diagnosis data for clinic, LIS system available, easy to manage.
- Fully automatic sampling and testing system, ensure the consistency and accuracy of the test results.
- Refrigerated reagent positions, extend the shelf life of the reagent.
- Test method Coagulation method (magnetic beads), immunoturbidimetry method, chromogenic substrate method
- Test items PT, APTT, TT, FIB and blood coagulation factors, DD, FDP etc.
- Throughput 120 t/h
- Sample position 35-105
- Tilt reagent position 21 refrigerated



MICROPLATE READER & WASHER PRODUCTS

PKL PPC 140

Microplate Reader

- 8 channels, reading 96-well plate in 5 seconds
- Touch screen, large LCD display
- High accurate optical measuring system
- PC control software optional



PKL PPC 230

Microplate Reader

- TOUCH PANEL/KEYPAD
- Accommodates different Microplate geometries
- Ability to read plate within seconds
- Various Curve fit mode like: Linear, Point to Point with scales such as Log ABS/Conc, Logit ABS/Log Conc, ABS/Conc, Log ABS/Log Conc etc.
- 0.000 to 3.500 Absorbance Units (A)
- 8 Channel



PKL PPC 150 **Microplate Washer**

- Minimal residual volume (<2ul/well)
- 8-way and 12-way wash heads interchangeable
- Positive displacement pump with low noise
- Overflow washing and overflow protection
- Bottom washing function



PKL PPC 240 **Microplate Washer**

- Minimal residual volume (<2µl/well)
- 8 Way Manifold autoclavable
- Plate Wash, Strip Wash, Bottom Wash, Overflow Wash, Rinsing, Priming, Disinfect
- 100 open Channels



OTHER PRODUCTS

PKL PPC 820

Specific Protein Analyzer

- 1, 4 independent channels to test different items simultaneously including HbA1c, HS-CRP, CRP, ASO, CYS-C, RF, mALB, D- Dimer, IgM, IgG, IgA, C3, C4, etc.
- Our specific protein analyzer PKL PPC 820 is a nephelometry assay instrument
- RF card design to simplify operation, automatic calibration
- 10,000 data memory capacity
- Automatic mixing and blanking
- Short test time with high efficiency and precision
- Build-in thermal printer
- Support LIS software



PKL PPC 840

Auto ESR Analyzer

- Large color display, touch screen 40 channels, up to 80T/H
- Two working method: 30 mins or 60 mins
- Up to 80 samples per hour
- 40 reading channels
- 40 samples at same time
- 4,000 results
- ESR curve display and print out
- Barcode reader optional
- Can connect LIS



PKL PPC 80800 A/B/C/AQ/BQ/CQ **Blood Gas Analyzer**

- 6 different models
- Arterial blood samples, Venous blood samples, Mixed venous blood samples, Capillary blood samples
- Items: pO₂, pCO₂, Potassium(K⁺), Sodium(Na⁺), Chloride(Cl⁻), Calcium (Ca²⁺), pH and Hct and Auto QC module.



ELECTROPHORESIS PRODUCTS

ELPHO

Automatic Electrophoresis System on Acetate Cellulose

- Analysis type: serumprotein, hemoglobin
- 1 to 16 samples micro
- 16 samples version: in 60 min;
the first 8 samples in 40 min
- 8 independent channels
- Chambers can be both extractable
in order to be filled.
- Emptied and washed; or fixed with
a total fluidic automation
- Computer inside, USB, LAN.
Remote connection.



ELPHO AGAROSE

Automatic Electrophoresis System on Agarose Gel

- Serumproteins, Hemoglobins, Urine Proteins
- 1 to 26 samples: 2 lines of 13 samples
(total 26 samples holes);26 samples in 45 min
- 13 ultrabright led
- Load, recover and discharge all reagent
with fluidic full Automatic
- Temperature Migration controller with Peltier
and transistor for essication of gel
- In the internal small basins with time
infrared probes;
- in the external tanks with immersion probes.
- Windows 10 or Windows 7
- PC & Keyboard ; mouse. (external PC)
- Dedicate Software with methodic changeable management



HbA1c PRODUCTS

PKL PPC800 HbA1c Meter

Clinical Application

HbA1c testing is fast becoming the preferred technique for diabetes diagnosis. By measuring the amount of HbA1c in the blood it is possible to determine average blood glucose control over an 8-12 week period.



HbA1c	mmol/	%
Normal	20-39	1.0 - 5.7
Prediabetes	39-46	5.7-6.4
Diabetes	≥48	≥ 6.5

HbA1c Test Frequency

Group

Stable glycemic control
Not meet glycemic goals or therapy changed
Unstable patients
High diabetes risk groups

Test Frequency

Twice a year
Every 3 months
≥every 3 months
Test routinely

Specifications

Specifications

Testing Principle
Testing Item
Testing Range
Precision
Blood Sample
Blood Volume
Testing time
Data Unit
Voice Prompt
Data Storage
Data Port
Bluetooth Function

Technical Parameters

Boronate Affinity Chromatography
Glycohemoglobin (Hb1Ac)
4%-14%
CV<3% (HbA1 c:4.0%-6.5%)
Capillary or venous blood (EDTA)
3μL
5 mins
NGSP%; IFCC mmol/mol
Voice prompt in whole process
1000 test results
USB, HIS/LIS system/thermal printer
Optional

PKL PPC 810HPLC

Automatic HbA1c Analyzer

Global Leading HPLC Principle

HPLC is a recommended principle by WHO. It is recognized as a "Gold Standard" as it has a high sensitivity and stable performance.

- Eliminate unstable HbA1c
- Eliminate variant Hb interferences
- HbA1c (NGSP&IFCC), HbF, eAG also can be tested at the same time



Performance Characteristics

- Whole blood mode (1.5ml)/diluted (10 μ l) - Automatic identify the sample type
- Automatic sample entry: on board capacity 50 samples, Non-stop
- Cap puncture function - Barcode reading - Auto-mixing function

Operation System & Software

- English operating software - Touch screen input - Data storage > 20000
- Pressure, temperature, test quantity display - Pressure, temperature alarm
- LIS data transmission

Cutting-edge Technology

- Adopting High Pressure plunger Pump (Micro-pump) to provide a hydrodynamic force, without the influence of any resistance from the rest of the entire chromatographic system ensure to provide a constant velocity.
- Using 24 AD high-precision detector allows to detect sample absorbance with a high-precision and high resolution.

Specifications

Principle	Ion exchange chromatography with HPLC principle
Throughput	Sample cycle \leq 25mins/T
Sample	Sample type: whole blood mode (1.5ml)/diluted mode (10 μ L) Automatic sample entry: on board capacity 50 samples, Non-stop
Testing	Wavelength: 415 nm Measuring range (NGSP value): HbA1c 4%-17%, $r \geq 0.99$ Carried contaminating rate: $\leq 0.1\%$ Precision: CV $\leq 2.0\%$
Power Requirement	Voltage: 220/240V Frequency: 50-60Hz Power: <100VA

CENTRIFUGES



Smart Centrifuge

PKL PPC M08

8 x 1.5/2.0 ml micro tubes closed Rotor
Fixed Speed of 6000 RPM; RCF 2000g
Unique closed rotor design for reduced friction
Smart Robust Design for long life with digital Display
SMPS Universal Electric supply for high efficiency
Electronic Safety Brake (on lid opening) -
suitable for quick spins

Standard Accessories included:

M08-B2 Interchangeable - PCR Strip Rotor (2 x 8 x 0.2 ml)

M08-D1/D2 Reduction Adaptors for 0.2/0.5 ml Micro tubes

* Special variable speed version (1000 to 6000 RPM) can be provided on request.



Smart Centrifuge

PKL PPC BL08VT

8 x 1.5/2.0 ml micro tubes closed Rotor
Variable Speed
(500 to 6000 RPM & and Timer setting feature
Brushless DC motor for efficient performance with low noise
(<55 dB)
High efficiency ± 25 RPM (self correcting at changing loads)
Unique closed rotor design for reduced friction
Sensor based imbalance detection

Smart Robust Design for long life with digital Display / Electronic Safety Brake (on lid opening)

Standard Accessories included:

M08-B2 Interchangeable - PCR Strip Rotor (2 x 8 x 0.2 ml)

M08-D1/D2 Reduction Adaptors for 0.2/0.5 ml Micro tubes.

Centrifuge for Hematocrit

PKL PPC 512

This unit is designed for flexibility and ease of use in the Laboratory, Hospital and Blood Bank. Brushless frequency motor for model PPC 512, free maintenance, no powder pollution, quick in speed up and down. Emergency lid opening switch, rubber fastenings, small vibration-free operation. There are 10 kinds of program and 10 kinds of acceleration and deceleration for your choice.



Rotors for PKL PPC 512:

Maxspeed (rpm)	Max Volume (ml)	Max RCF (g)
12000	12 piecescapillary	15800
12000	24 piecescapillary	15800



Centrifuge Biofuge-8

PKL PPC 502A:

Features: Portable, tabletop centrifuge with a maximum RPM of 4000 r/min, maximum volume of 8 x 15mL and maximum RCF of 1880 x g. It has a brushless DC motor and digital display. It has a simple construction and it is easy to maintain. The intended use of this product is to prepare platelet rich plasma through the separation of blood. This tabletop low speed centrifuge is widely used in the fields of clinical medicine, biochemistry, genetic engineering and radioimmunity.



Rotors for PKL PPC 502A:

Rotor No.	MaxSpeed (rpm)	Max Volume (ml)	Max RCF (g)
Angle Rotor	4000	8x15ml	1880
Angle Rotor	4000	6x10ml	1880
Angle Rotor	4000	12x7/5ml	1720
Angle Rotor	4000	8x7/5ml	1800



Biofuge PCR
PKL PPC 503

Features

1. Brushless motor, no pollution, free-maintenance.
2. Microprocessor control, LED display which indicator the speed, time, RCF inoperation, 10 kind of brake setting, operate simply.
3. Electric lid lock, superspeed, imbalance protection. The centrifuge body is made of high quality steel, stainless steel chamber, safe and reliable.
4. Rotor is connected to spindle by specialized taper sleeve, loading simple and quick, no direction.
5. 3 tiers protection steel cover and get the ideal centrifugation result.

PPC 503 Technical Data:

- Max Speed 16000 r/min
- Max Capacity 10 x 5 mL
- Max RCF 19040 x g
- Timer 1 – 99h 59 min
- Acc / Dec 10 kinds
- Noise ≤ 55 dB (A)
- Power 110/220 V / 60 Hz / 2A
- Dimensions 355 mm x 270 mm x 205 mm
- Net Weight 14 Kg

Rotor detail information:

Rotor No.	Max Speed(rpm)	Max Volume(ml)	Max.RCF ×g)
Angle Rotor	16000	40×0,2ml	19040
Angle Rotor	16000	24×0,5ml	18480
Angle Rotor	16000	12×1,5/2ml	16260
Angle Rotor	16000	10×5ml	17880
Angle Rotor	14000	20×1,5/2ml	15580
PCR Rotor	13000	4x8 PCR	10410



NO31003
 Angle Rotor
 12x1.5/2ml
 16000rpm



NO61006
 PCR Rotor
 4x8PCR
 13000rpm

Centrifuge Biofuge-12

PKL PPC 504A

Features: Widely used in hospital, laboratory and blood bank.

- Brushless DC motor for model PPC 504A which in great torque, free maintenance, no powder pollution, quick in speed up and down
- The flexible axle driven system which drive the rotor directly, smooth in operation, low noise and small vibration
- Micro computer control system, digital display the RCF time and speed There are 10 kinds of program and 10 kinds of acceleration and deceleration for your choice
- Electric lid lock, compact design, super speed and imbalance protection
- The centrifuge body is made of high-quality steel, safe and reliable.



Rotors for PKL PPC 504A:

Rotor No.	MaxSpeed (rpm)	Max Volume (ml)	Max RCF (g)
Angle Rotor	4000	30×7/5ml	2250
Angle Rotor	4000	18×10ml	2250
Angle Rotor	4000	24×10ml	2200
Angle Rotor	4000	12×15/7/5ml	2150
Angle Rotor	4000	12×20ml	2220
Angle Rotor	4000	12×10ml Vacuum tube	2150
		12×7ml Vacuum tube adapter	
		12×5ml Vacuum tube adapter	



Centrifuge Biofuge-24

PKL PPC 505

Features: PC 505 centrifuge is of microprocessor control, less noisily, it is widely used to qualitative analysis of blood serum, plasma and urea in the fields of hospital, blood center, beauty industry and biochemistry • Brushless frequency motor for model PPC 505 which in great torque, free maintenance, no powder pollution, quick in speed up and down • The flexible axle driven system which drive the rotor directly, smooth in operation and small vibration • Micro computer control system, digital display the RFC time and speed. There are 10 kinds of program and 10 kinds of acceleration and deceleration for your choice. Automatically electric lid lock, compact design, super speed and imbalance protection • The centrifuge body is made of high-quality steel, safe and reliable.



Rotors for PKL PPC 505:

Rotor No.	MaxSpeed (rpm)	Max Volume (ml)	Max RCF (g)
Angle Rotor	5000	12×15	3080
Angle Rotor	5000	24×15	3500
Swing Rotor	4000	32×10 vacuum tube	2580
Swing Rotor	4000	32×7 vacuum tube adapter	2580
Swing Rotor	4000	32×5 vacuum tube adapter	2580
Micro PlateRotor	4000	6×48 well	2300
Micro PlateRotor	4000	4×96 well	2490



Centrifuge Biofuge-32

PKL PPC 505A

Description Technical Parameters:

- Max speed: 5000rpm
- Max RCF: 4730xg
- Max volume: 4x300ml
- Noise: ≤ 58 dB
- Timer: 0~99min
- Net weight: 52KG
- Dimension(HxDxW): 360×621×450mm
- Power supply: AC 220V 50HZ 5A
- Package: carton box or wooden box
- Speed accuracy: ± 20 rpm

Features: PPC 505A centrifuge is of microprocessor control, less noisily, it is widely used to qualitative analysis of blood serum, plasma and urea in the fields of hospital, blood center, beauty industry and biochemistry.

- Brushless frequency motor for model PPC 505A which in great torque, free maintenance, no powder pollution, quick in speed up and down
- Quiet, smooth in operation and small vibration
- There are more than 20 kinds of rotors for your choice, suitable for different customers' requirements of separation
- Micro computer control system, digital display the RCF time and speed. There are 10 kinds of program and 10 kinds of acceleration and deceleration for your choice
- Automatically electric lid lock, compact design, super speed and imbalance protection
- The centrifuge body is made of high-quality steel, safe and reliable.



Rotors for PKL PPC 505A:

Rotor No.	MaxSpeed (rpm)	Max Volume (ml)	Max RCF (g)
Angle Rotor	5000	30x15ml	3200
Swing Rotor	4000	32×15ml	2880
Swing Rotor	4000	48×10ml	2880
Swing Rotor	4000	4x300ml	2920
MicroplateRotor	4000	8x96well	2490
MicroplateRotor	4000	6x48well	2300
Swing Rotor	4000	48×7ml Vacuum tube adapter	2790
Swing Rotor	4000	48×5ml Vacuum tube adapter	2790

Centrifuge Large Capacity

PKL PPC 505L

Description Technical Parameters: • Max speed: 5000rpm • Max RCF: 4730xg • Max volume: 4x800ml • Noise: ≤58dBA • Timer: 0~99min • Net weight: 67KG • Dimension(WxDxH): 685×500×385mm • Power supply: AC 220V 50HZ 5A • Package: carton box or wooden box • Speed accuracy: ±20rpm. Features: PPC 505L centrifuge is of microprocessor control, less noisy, it is widely used to qualitative analysis of blood serum, plasma and urea in the fields of hospital, blood center, beauty industry and biochemistry. • Brushless frequency motor for model PPC 505L which in great torque, free maintenance, no powder pollution, quick in speed up and down • Quiet, smooth in operation and small vibration • There are more than 20 kinds of rotors for your choice, suitable for different customers' requirements of separation • Micro computer control system, digital display the RCF time and speed. There are 10 kinds of program and 10 kinds of acceleration and deceleration for your choice • Automatically electric lid lock, compact design, super speed and imbalance protection • The centrifuge body is made of high-quality steel, safe and reliable.



Rotors for PKL PPC 505L:

Rotor Type	Max speed (rpm)	Max Volume(ml)	MaxRCF (g)
Swing Rotor	4000	52 x 15 ml	3450
Swing Rotor	4000	72 x 10 ml	3140
Swing Rotor	4000	160 x 7 ml	3140
Swing Rotor	4000	4 x 800 ml	3450
Microplate Rotor	4000	8 x 96 well	2490
Microplate Rotor	4000	6 x 48 well	2300
Angle Rotor	4000	30 x 15 ml	3150

Centrifuge Refrigerated

PKL PPC 506R

Table Top Refrigerated Centrifuge

506R tabletop low speed large capacity refrigerated centrifuge. Ideal for Medical, Life Sciences, and Agricultural Sciences fields and so on. This machine can match different rotor types and many kinds of volumes, which support kinds of Laboratory tests and Small batch preparation and separating blood bag requirements. Its Max speed is 5000r/min, Max. RCF is 4730×g, Max. volume 4×800ml. 506R has fast cooling down function, and use brushless frequent motor drive, microprocessor control system, soft control touch panel, digital display run parameters, adjustable acceleration & deceleration, and auto-electric lid interlock with alarm for a combined safe protection system. We assure you of "stable function, Quiet noise, Simple operation, Convenient using



Main specification and technical parameters:

Max. Speed	5000 r/min
Max. Volume	4×800ml
Max. RCF	4730×g
Temperature range	-20°C ~ 40°C
Timer	99h 59min
Temperature Accuracy	±1°C
Speed Accuracy	±50 r/min
Noise	≤ 62dB(A)
Power supply	220V ~ 50Hz 15A
Dimension	700mm×715mm×420mm

Rotors for PKL PPC 506R:

Rotor No.	Rotor Type	Max speed (rpm)	Max Volume(ml)	MaxRCF (g)
No.30671	Swing out rotor	4000	4x800ml	3450
No.30696	Swing out rotor	4000	4x500ml	3380
No.31377	Swing rotor head			
	Swing out rotor	5000	4x50ml	4730
			4x100ml	4000
		4000	8x100ml	3020
			8x50ml	3200
			24x15ml	3200
			32x15ml	3200
		4000	88x5ml vacuum tube	2480
			160x5ml vacuum tube	2480
			88x7ml vacuum tube	
No.31377	Swing out rotor	4000	32x10ml vacuum tube	2790
			32x7ml vacuum tube adapter	
			32x5ml vacuum tube adapter	
			48x10ml vacuum tube	2880
			48x7ml vacuum tube	2760
			48x5ml vacuum tube	2480
			72x10ml vacuum tube	3140
			160x7ml vacuum tube	3140
No.31376	Micro plate rotor	4000	2x3x48 well	2300
No.31494			4x4x96 well	2840
No.30638	Angle Rotor	5000	6x15ml	2540
No.30607	Angle Rotor	5000	12x15ml	3080
No.30639	Angle Rotor	5000	24x15ml	3500
No.30640	Angle Rotor	5000	4x50ml	2520
No.30611	Angle Rotor	5000	6x50ml	2850
No.30641	Angle Rotor	5000	12x50ml	3860
No.30613	Angle Rotor	5000	4x100ml	2630
No.30614	Angle Rotor	5000	6x100ml	3130
No.30642	Angle Rotor	4000	12x100ml	2970

Ask for the complete list of Centrifuges and of Rotors.

CABINETS

PKL PPC BIO 100/101

Class I: The Class I biological safety cabinet is an open-front negative pressure cabinet. The Class I biological safety cabinet will provide personnel and environmental protection, but not product protection. All of the air from the cabinet is sent through a HEPA filter, either into the laboratory or to the outside. Optional: Base stand



MODEL	Internal Dims (mm)	External Dims (mm)	Package Size (mm)
PPCBIO100	540x385x440	550x395x730	755x600x950
PPCBIO101	680x540x500	700x550x900	1000x700x1200

PKL PPC BIO 102

Class I: The Class I biological safety cabinet is an open-front negative pressure cabinet. The Class I biological safety cabinet will provide personnel and environmental protection, but not product protection. All of the air from the cabinet is sent through a HEPA filter, either into the laboratory or to the outside. Optional: Base stand



MODEL	Internal Dims (mm)	External Dims (mm)	Package Size (mm)
PPCBIO102	540x385x440	550x395x730	755x600x950

PKL PPC BIO 103

Class I: The Class I biological safety cabinet is an open-front negative pressure cabinet. The Class I biological safety cabinet will provide personnel and environmental protection, but not product protection. All of the air from the cabinet is sent through a HEPA filter, either into the laboratory or to the outside.

Optional: Base stand



MODEL	Internal Dims (mm)	External Dims(mm)	Package Size(mm)
PPC BIO 103	968x695x630	1100x695x1924	1270x880x2230

PKL PPC BIO 116 / 117 / 118 / 119 / 120

Biosafety Cabinet, Class II A2 Three protection: operator, sample and environment. Airflow system: 70% air recirculation, 30% air exhaust A2 Cabinet is suitable for working with microbiological research in the absence of volatile or toxic chemicals and radionuclide.

Optional: Base stand



MODEL	Internal Dims (mm)	External Dims(mm)	Package Size(mm)
PPC BIO 116	940x600x660	1100x750x2250	1220x1000x1840
PPC BIO 117	1150x600x660	1300x750x2250	1460x1050x1800
PPC BIO 118	1350x600x600	1500x750x2250	1630x1000x1820
PPC BIO 119	1710x600x660	1870x750x2290	2000x950x1820
PPC BIO 120	1800x600x660	1950x800x2305	2090x1050x1860

PKL PPC BIO 110

Biosafety Cabinet, Class II A2 Three protection: operator, sample and environment. Airflow system: 70% air recirculation, 30% air exhaust A2 Cabinet is suitable for working with microbiological research in the absence of volatile or toxic chemicals and radionuclide. Optional: Base stand



MODEL	Internal Dims (mm)	External Dims (mm)	Package Size(mm)
PPCBIO110	600x500x540	700x650x1230	860x960x1450

PKL PPC BIO 125 / 126 / 127 / 128

Three protection: operator, sample and environment.

Airflow system: 0% air recirculation, 100% air exhaust B2 Biological Safety Cabinet has higher class of safety protection compared with type A2, it may be used for work with volatile toxic chemicals and radionuclides as required as adjuncts to microbiological studies.

Optional: Base stand

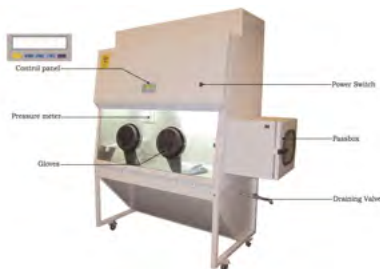


MODEL	InternalDims (mm)	ExternalDims(mm)	Package Size(mm)
PKL PPC BIO 125	940x600x660	1100x750x2250	1220x1000x1840
PKL PPC BIO 126	1150x600x660	1300x750x2250	1460x1050x1800
PKL PPC BIO 127	1350x600x660	1500x750x2250	1630x1000x1820
PKL PPC BIO 128	1710x600x660	1870x750x2290	2000x950x1820

PPC BIO 134PKL PPC BIO 134

Class III: The Class III cabinet is a totally enclosed ventilated cabinet of gas-tight construction. Operations within the Class III cabinet are conducted through attached rubber gloves. The Class III biological safety cabinet will provide personnel, environment and product protection. Class III cabinets can be used to operate infectious agents (usually

Classes 3, 4 or 5) • Complete sealed: Front window is sealed, and with pairs of gloves connecting to the operation area, product is transferred by the delivery window. And there is no out-connected valve • 100% exhaust: 100% air exhaust, no air recirculation, and air is exhausted by three ULPA filters and to the room directly. If the air needs to be exhausted to outdoors, another out connected duct need to be ordered, and extra duct and motor are required • Complete negative pressure: The two motors design makes interior of cabinet is complete negative pressure, and can reach -274pa, triple layers filter film, ensures operation's security, neither substance nor polluted air will leak out.



MODEL	InternalDims (mm)	ExternalDims(mm)	Package Size(mm)
PPC BIO 134	900x595x560	1000x705x1770	1160x920x1350

PPC BIO 132

The Cytotoxic Safety Cabinet is the premium solution for cytotoxic / antineoplastic Drug processing, providing the highest level of patient, pharmacist and environmental protection • The unique demands of handling and preparing cytotoxic drugs for use in chemotherapy require a specialized cabinet • ULPA filter, efficiency >99.999% for partial size at 0.12 μm • 2 pieces HEPA filters, efficiency >99.999% for particle at 0.3 μm • Filter life indicator and filter working time indicator Abnormal airflow velocity; Filter replacement; Front window at unsafe height • Fluorescent Lamp • Front Window: Motorized, two-layer laminated 5mm toughened glass. Anti UV • Standard Configuration: Base stand, Drain valve, waterproof sockets x2, Remote control, UV lamp x2 and Fluorescent Lamp, Water tap, Gas tap • Optional accessory: Armrest, Formalin fumigation sterilizer, infrared sterilizer.



MODEL	InternalDims (mm)	ExternalDims(mm)	Package Size(mm)
PPC BIO 132	1220x660x630	1370x760x2100	1550x900x2280

PKL PPC BIO 153 / 154 / 155

FH series Fume hoods are the first defense to minimize chemical exposure to research workers. They are considered the primary means of protection from inhalation of hazardous vapors. Fume Hood is used to protect lab environment and operator during general chemical applications. It actively protects operator from inhaling toxic vapors and dramatically reduces the risk of fire and explosion. By installing proper filter, it can also protect environment. Optional: Base stand



MODEL	InternalDims (mm)	ExternalDims(mm)	Package Size(mm)
PPC BIO 153	880x730x745	1000x840x2150	1230x1120x1680
PPC BIO 154	1080x730x745	1200x840x2150	1350x1120x1680
PPC BIO 155	1380x730x745	1500x840x2150	1650x1120x1680

PKL PPC BIO 500 / 501

The laminar flow clean bench is a work bench or similar enclosure which has its own filtered air supply. It provides product protection by ensuring that the work in the bench is exposed only to HEPA-filtered air. Laminar flow clean benches are widely used in medical research laboratories, hospitals, manufacturing facilities and other research and production environments. We can offer both horizontal and vertical flow models for you. Horizontal Laminar Flow Clean Bench. In horizontal flow models filtered air is then passed through the main chamber of the cabinet in a horizontal laminar (unidirectional) air stream and is exhausted through the front opening of the cabinet. Laminar Flow Cabinet –sample protection only Laminar Flow Cabinet is a work bench or similar enclosure, which creates a particle-free working environment by taking air through a filtration system and exhausting it across a work surface in a laminar or unidirectional air stream. The laminar flow cabinet is enclosed on the sides and kept under constant positive pressure in order to prevent the infiltration of contaminated room air. Optional: Base stand



MODEL	InternalDims (mm)	ExternalDims(mm)	Package Size(mm)
PKL PPC BIO 500	1040x500x650	1060x800x1690	1230x1000x1820
PKL PPC BIO 501	1440x500x650	1460x800x1690	1630x100x1820

PKL PPC BIO 502 / 503

The laminar flow clean bench is a work bench or similar enclosure which has its own filtered air supply. It provides product protection by ensuring that the work in the bench is exposed only to HEPA-filtered air. Laminar flow clean benches are widely used in medical research laboratories, hospitals, manufacturing facilities and other research and production environments. We can offer both horizontal and vertical flow models for you. Horizontal Laminar Flow Clean Bench In horizontal flow models filtered air is then passed through the main chamber of the cabinet in a horizontal laminar (unidirectional) air stream and is exhausted through the front opening of the cabinet. Laminar Flow Cabinet –sample protection only Laminar Flow Cabinet is a work bench or similar enclosure, which creates a particle-free working environment by taking air through a filtration system and exhausting it across a work surface in a laminar or unidirectional air stream. The laminar flow cabinet is enclosed on the sides and kept under constant positive pressure in order to prevent the infiltration of contaminated room air. Optional: Base stand



MODEL	InternalDims (mm)	ExternalDims(mm)	Package Size(mm)
PKL PPC BIO 502	1200x500x570	1300x825x2040	1450x1060x1650
PKL PPC BIO 503	1700x500x570	1800x825x2040	1850x1060x1650

PKL PPC BIO 140/141/142/143

The laminar flow clean bench is a work bench or similar enclosure which has its own filtered air supply. It provides product protection by ensuring that the work in the bench is exposed only to HEPA-filtered air. Laminar flow clean benches are widely used in medical research laboratories, hospitals, manufacturing facilities and other research and production environments. We can offer both horizontal and vertical flow models for you. Vertical Laminar Flow Clean Bench



In vertical flow models, filtered air is passed through the main chamber of the cabinet in a vertical laminar (unidirectional) air stream before being exhausted through the front opening of the cabinet. Laminar Flow Cabinet-sample protection only Laminar Flow Cabinet is a work bench or similar enclosure, which creates a particle-free working environment by taking air through a filtration system and exhausting it across a work surface in a laminar or unidirectional air stream. The laminar flow cabinet is enclosed on the sides and kept under constant positive pressure in order to prevent the infiltration of contaminated room air. Laminar flow cabinet is widely used in medical research laboratories, hospitals, manufacturing facilities and other research and production environments.

Optional: Base stand

MODEL	InternalDims (mm)	ExternalDims(mm)	Package Size(mm)
PKL PPC BIO 140	940x560x545	1040x660x1770	1190x890x1340
PKL PPC BIO 141	1200x645x610	1310x750x2040	1460x1070x1650
PKL PPC BIO 142	1340x540x545	1440x615x1770	1590x890x1330
PKL PPC BIO 143	1700x645x610	1800x750x2040	1960x970x1600

PKL PPC BIO 148

The laminar flow clean bench is a work bench or similar enclosure which has its own filtered air supply. It provides product protection by ensuring that the work in the bench is exposed only to HEPA-filtered air. Laminar flow clean benches are widely used in medical research laboratories, hospitals, manufacturing facilities and other research and production environments. We can offer both horizontal and vertical flow models for you.



Vertical Laminar Flow Clean Bench

In vertical flow models, filtered air is passed through the main chamber of the cabinet in a vertical laminar (unidirectional) air stream before being exhausted through the front opening of the cabinet. Laminar Flow Cabinet-sample protection only Laminar Flow Cabinet is a work bench or similar enclosure, which creates a particle-free working environment by taking air through a filtration system and exhausting it across a work surface in a laminar or unidirectional air stream. The laminar flow cabinet is enclosed on the sides and kept under constant positive pressure in order to prevent the infiltration of contaminated room air. Laminar flow cabinet is widely used in medical research laboratories, hospitals, manufacturing facilities and other research and production environments.

Optional: Base stand

MODEL	Internal Dims (mm)	External Dims (mm)	Package Size (mm)
PKL PPC BIO 148	630x375x545615	680x410x1160	840x560x1380

PKL PPC BIO 130

PCR Cabinet is equipment that makes a partial clean air environment, its air current is vertical. It has applied to semiconductor industry, precision instrument, electronic component, optics apparatus, chemical industry, metallurgy and refining, magnetic material, micro-organism studies, medical science, research and some other departments. It is useful to increase the quality, precision, stability and reliability of products.



1. LED display. 2. UV sterilization system. 3. HEPA filter efficiency 99.999% at 0.3µm 4. Interlock function: UV lamp only can be switched on when the front window is closed, ensuring operator safety. 5. UV timer (1-99 minutes): When the setting time expires, the UV lamp automatically switches off in preparation for the next experiment. Optional: Base stand

MODEL	Internal Dims (mm)	External Dims (mm)	Package Size (mm)
PKL PPC BIO 130	900x595x560	1000x705x1770	1160x920x1350

INCUBATORS AND OVENS

Costant Temperature Incubator

PKL PPC 300 / 301 / 302

Features: Intelligent temperature controller, based on microprocessor with PIO parameters controlling function, and LCD display make temperature accurate and reliable. • The double door makes the temperature fluctuation small. The toughened-glass inner door is convenient to observe chamber condition without affecting chamber temperature. • The working chamber adopts 304 stainless steel and round angle structure, easy to clean. • Temp. Range RT+5-65°C • Temp. Fluctuation $\pm 0.5^{\circ}\text{C}$ • Alarm over-temperature alarm;audible and visual alarm. • Optional Accessories:Independent temperature protector



MODEL	PKL PPC 300 (30lt)	PKL PPC 301 (50lt)	PKL PPC 302 (80lt)
Consumption	200W	210W	280W
Power Supply	AC110/220V $\pm 10\%$, 50/60Hz		
Internai Size(mm)	320x300x315	350x350x410	400x400x500
ExternalSize(mm)	610x470x470	500x520x710	570x580x820
Package Size(mm)	780x610x650	650x650x900	705x705x1000
GrossWeight(kg)	45	55	70

Costant Temperature Incubator

PKL PPC 303 / 304

Features: Intelligent temperature controller, based on microprocessor with PIO parameters controlling function, and LCD display make temperature accurate and reliable. The double door makes the temperature fluctuation small. The toughened-glass inner door is convenient to observe chamber condition without affecting chamber temperature • The working chamber adopts 304 stainless steel and round angle structure, easy to clean. • Temp. Range RT+5-65°C • Temp. Fluctuation $\pm 0.5^{\circ}\text{C}$ • Alarm over-temperature alarm;audible and visual alarm • Optional Accessories:Independent temperature protector.



MODEL	PKL PPC 303 (160lt)	PKL PPC 304 (270lt)
Consumption	380W	570W
Power Supply	AC110/220V $\pm 10\%$, 50/60Hz	
Internai Size(mm)	500x500x650	600x600x750
ExternalSize(mm)	660x680x950	855x835x1185
Package Size(mm)	800x800x1160	900x900x1240
GrossWeight(kg)	90	105

CO2 Incubators

PPC BIO 310 / 311 / 312

Features: Air jacket: equipped with UV Lamp for sterilizing; • Water jacket: equipped with HEPA filter • Equipped with USB port and LCD touch screen, the incubator can save data in real time Water tank for humidity in the chamber • High quality infrared sensor for accurate CO2 concentration • The working chamber adopts round angle structure, easy to clean • High quality CO2 gas filter ensures the inside gas quality • SMC brand gas circuit valves ensure more stable CO2 concentration and less consumption of CO2 gas • Microcomputer controller, LCD displays temperature curve, CO2 concentration, run-time and timing. • Heating : Air Jacket (Water Jacket optional for PKL PPC BIO 311) • CO2 Control: Infrared sensor , range 0-20%, CO2 concentration control error 5%±0,1%
Optional Accessories: • Pressure regulator • APP remote operating system (can realize the control of the device within the LAN)



<u>MODEL</u>	PKL PPC 310 (50lt)	PKL PPC 311 (80lt)	PKL PPC 312 (160lt)
Internal size (WxDxH)mm	368x387x408	398x446x498(air jacket) 380x450x590 (water jacket)	498x546x678
External size(WxDxH)mm	500x527x821	600x596x921(air jacket) 543x628x1033(water jacket)	700x666x1101
Packing size (WxDxH)mm	655x685x970	735x735x1070(air jacket) 680x770x1200(water jacket)	760x800x1250
Grossweight(kg)	110	138(air jacket) 158(water jacket)	168

CO₂ Incubators

PPC BIO 313 / 314 / 315 **(Air jacket/water jacket)**

Features: UV Lamp for sterilizing the incubator • Infrared sensor for accurate CO₂ concentration • Water tank for humidity in the chamber • CO₂ incubator pressure regulator • The working chamber adopts round angle structure, easy to clean • Microcomputer controller, LED displays temperature, CO₂ concentration, run-time and timing • Heating : Air jacket/water jacket • Temp. Range RT +5-60°C



MODEL	PKL PPC 313 (80lt)	PKL PPC 314 (160lt)	PKL PPC 315 (270lt)
Consumption	600W(air jacket) 1200W(water jacket)	900W(water jacket) 1200W(air jacket)	700W(air jacket) 2100W(water jacket)
Power Supply	AC220V±10%, 50/60Hz		
Internal Size(WxDxH)	410x405x510 mm	505x455x700 mm	600x600x750 mm
External Size	570x590x850 mm	670x640x1030 mm	770x790x1080 mm
Package Size	700x740x1020 mm	800x790x1200 mm	900x940x1260 mm
Gross Weight (kg) 90	115 mm	165 mm	

Forced Air Drying Oven

PKL PPC 320 / 321 / 322 / 323

Features: External material: cold-rolled steel with anti-bacteria powder coating • Stainless steel inner chamber, round angle structure, adjustable shelves • Double-layer glass observation window, adjustable airtight buckle lock • PID microprocessor intelligent temperature controller • Over-temperature protection • Optional independent temperature protector • Temp. Range RT+10-300°C • Temp. Precision 0.1°C



MODEL	PPC BIO 320 (30lt)	PPC BIO 321 (45lt)	PPC BIO 322 (65lt)	PPC BIO 323 (125lt)
Consumption	800W	1200W	1600W	2300W
Power Supply	AC220V±10%, 50/60Hz			
Internal Size(WxDxH) mm	310x310x310	350x350x350	400x360x450	500x450x550
External Size(WxDxH) mm	460x510x695	500x550x735	540x550x840	636x680x915
Package Size(WxDxH) mm	550x570x765	620x585x800	640x640x905	730x720x1000
GrossWeight(kg)	51	56	61	71

Forced Air Drying Oven

PKL PPC 324

Features: External material: cold-rolled steel with anti-bacteria powder coating. Stainless steel inner chamber, round angle structure, adjustable shelves • Double-layer glass observation window, adjustable airtight buckle lock • PID microprocessor intelligent temperature controller • Over-temperature protection • Optional independent temperature protector • Temp. Range RT+10-300°C • Temp. Precision 0.1°C



MODEL	PPC BIO 324 (230lt)
Consumption	3000W
Power Supply	AC220V±10%, 50/60Hz
Internal Size(WxDxH) mm	600x500x750
External Size(WxDxH) mm	730x670x1220
Package Size(WxDxH) mm	730x860x1030
GrossWeight(kg)	110

MICROSCOPES

Biological Microscope Base

PMC-5

Personal belonging of young scientists. PMC-5 biological microscope with elaborate appearance and reliable quality, is beautiful and practical. Its easy operation and clear image inspire students' imagination and interesting of microscopy world, is helpful to explore the mystery of life science. New generation of scientists are born from here. Sliding binocular head, inclined at 45° Eyepiece: WF10X/18mm. Interpupillary distance: 55-75mm. Objective: Achromatic 4X, 10X, 40X(S), 100X(S,OIL) Double layers mechanical stage: 140X132/75X45 mm Focusing range 30mm, focusing interval 0.002mm Condenser Abbe NA=1.25, Iris diaphragm, filter holder. 6V/20W Halogen lamp or 3W LED light, adjustable brightness. Eyepiece of WF16X is for optional. Wooden case is for optional.



Biological Microscope Medium

PMC-8

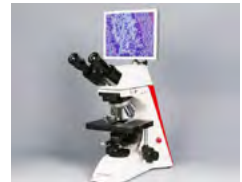
Personal belonging of young scientists. PMC-8 biological microscope with elaborate appearance and reliable quality, is beautiful and practical. Its easy operation and clear image inspire students' imagination and interesting of microscopy world, is helpful to explore the mystery of life science. New generation of scientists are born from here. Seidentopf binocular head, 30° inclined, 360° rotation. Eyepiece: WF10X/18mm. Interpupillary distance: 48-75mm - Objective: Achromatic 4X, 10X, 40X(S), 100X(S,OIL) Double layers mechanical stage: 140X132/75X45 mm. Focusing range 30mm, focusing interval 0.002mm. Coaxial Coarse and Fine Adjustment. Condenser Abbe NA=1.25, Iris diaphragm, filter holder. 6V/20W Halogen lamp, adjustable brightness.



Biological Microscope High

PMC-30

Personal belonging of young scientists
PMC-30 biological microscope with elaborate appearance and reliable quality, is beautiful and practical. Its easy operation and clear image inspire students' imagination and interesting of microscopy world, is helpful to explore the mystery of life science. New generation of scientists are born from here. Standard : Binocular tube. Optional : trinocular tube, Video, Fluorescence and other . Infinite optical system. Seidentopf binocular head, 30° inclined, 360° rotation. Eyepiece: WF10X/20mm. Interpupillary distance: 50-75mm. Infinite Plan objectives: 4X, 10X, 20X, 40X(S,OIL), 100X(S,OIL). Mechanical stage with removable slide holder 190×140/78x55mm. Condenser: Abbe type N.A.=1.25 with Iris Diaphragm. Focusing: Coaxial coarse/fine focusing knobs. Kohler Illumination: 6V/20W halogen lamp or 3W LED adjustable.



Biological Microscope High Polarizing Microscope

PMC-30 Polar

Personal belonging of young scientists. PMC-30 Polar biological microscope with elaborate appearance and reliable quality, is beautiful and practical. Its easy operation and clear image inspire students' imagination and interesting of microscopy world, is helpful to explore the mystery of life science. New generation of scientists are born from here. • Standard : Binocular tube

• Optional : trinocular tube , Video , Fluorescence and other. Infinite optical system. Seiden to pfb inocular head, 30° inclined, 3 60° rotation. Eyepiece: WF10X/22mm. Interpupillary distance: 46-76mm. Infinite Plan objectives: 4X, 10X, 20X, 40X(S,OIL), 100X(S,OIL). Mechanical stage with removable slide holder 190×140/78×55mm

Condenser: Swing type N.A.=1.25 with Iris Diaphragm. Focusing: Coaxial coarse/fine focusing knobs. Kohler Illumination: 6V/20W halogen lamp adjustable brightness. Focusing: Coaxial Coarse and Fine adjustment, focusing range 30mm., focusing interval 0.002mm.

Optionals: Polarizing attached mechanical stage. Trinocular head and adaptor for digital camera



Biological Fluorescent Microscope

PMC-30 Fluor

Personal belonging of young scientists. PMC-30 Fluor biological microscope with elaborate appearance and reliable quality, is beautiful and practical. Its easy operation and clear image inspire students' imagination and interesting of microscopy world, is helpful to explore the mystery of life science. New generation of scientists are born from here.

• Standard : Binocular tube • Optional : trinocular tube, Video and other. WF10X/20mm, Interpupillary Adjustable Distance 50-75 mm

Infinite Plan Objectives(5pcs): 4X, 10X, 20X, 40X, 100X. Double Layers Mechanical Stage 190×140/78×55 mm. Epi-illumination, 220V(or 110V) 100W Mercury Lamp

Abbe type N.A.=1.25 with Iris Diaphragm. Blue excitation: BP460-490, DM500, BA520

Green excitation: BP510-550, DM570, BA590. Power Supply: 85V-265V universal power supply



Inverted Biological Fluorescence Microscope

PMC - Invert Fluor

Trinocular head inclined at 30°, interpupillary distance 48-75mm
High-Point Extra Wide Field Eyepiece: EW10X/22mm
LWD Infinite Plan Objectives: 4X/0.1 WD17,3mm & 40X/0.6 WD2.1mm. Infinite Plan Phase Objectives: PH10X/0.25, WD10mm & PH20X/0.4. ELWD condenser NA0.3, LWD 72mm (without condenser 150mm). Quintuple Nosepiece, 10X-20X, 40X, Phase Annulus Plate
Koheler illumination S.led or Halogen lamp 6V/30W. Blue excitation BP 460-490; Green excitation BP 480-550 is optional. 100W HBO Ultra Hi-voltage Spherical Mercury Lamp
The Attachable Mechanical Stage (120x78mm)
Video / Photo adapter is optional



Inverted Biological Microscope

PMC-Invert

Trinocular head inclined at 30°, interpupillary distance 48-75mm
High-Point Extra Wide Field Eyepiece: EW10X/22mm
LWD Infinite Plan Objectives: 4X/0.1 WD17,3mm & 40X/0.6 WD2.1mm. Infinite Plan Phase Objectives: PH10X/0.25, WD10mm & PH20X/0.4 ELWD condenser NA0.3, LWD 72mm (without condenser 150mm). Quintuple Nosepiece, 10X-20X, 40X, Phase Annulus Plate.
Koheler illumination S.led or Halogen lamp 6V/30W. Blue excitation BP 460-490; Green excitation BP 480-550 are optional. 100W HBO Ultra Hi-voltage Spherical Mercury Lamp is optional.
The Attachable Mechanical Stage (120x78mm) is optional. Video / Photo adapter is optional.



Inverted Metallurgic Microscope

PMC-Metal

Trinocular head inclined at 30°, interpupillary distance 48-75mm
High-Point Extra Wide Field Eyepiece: EW10X/20mm
Infinite Plan Objectives: 4X/0.1 WD17,3mm, 10X/0.25, WD10mm, PH20X/0.4 & 40X/0.6 WD2.1mm. Quintuple nosepiece. Plain stage with clips. Coaxial coarse & fine adjustment, vertical objective movement, coarse stroke 37,7 mm. per rotation, fine stroke 0,2 mm. per rotation. Koheler illumination S.led or Halogen lamp 6V/30W. Filters blue, green, yellow and ground glass. Polarization set. The Attachable Mechanical Stage (120x78mm) is optional. Video / Photo adapter is optional.



Stereo Microscope Base

PMC-4

45° inclined and 360° rotatable binocular head with locked-in eyepiece.
Eyepiece: EW10X. Rotational Objectives: 2X – 4X. Plate Frosted Glass.
Incident illumination & transmitted illumination
Halogen lamp 12V/10W. Power Supply 220V/50hz



Stereo Microscope Medium

PMC-60

45° inclined and 360° rotatable. Binocular head with locked-in eyepiece. Zoom Ratio 1:6.4. Eyepiece: EW10X/20mm.
Objective zoom range 0.7x-4.5x. Magnification 7x-45x.
Incident illumination & transmitted illumination by 3W Led.
Halogen lamp 12V/10W.
Power Supply 220V/50hz.



Ask for the complete list of Microscopes and of Accessories.

-86° FREEZER



158L



338L



408L

Technical Parameters

MODEL	86V158	86V338	86V408
External Size (WxDxH)mm	700x700x1580	854x1072x1907	872x1028x1945.5
Internal Size (WxDxH)mm	458x430x788	488x607x1140	606x575x1180
Capacity	158L	338L	408L
Type	Vertical		
Control System	Microprocessor control, LED Display	-40 ~ -86°C	-40 ~ -86°C
Audible and Visual Alarm	High temperature, Sensor failure	High and low temperature, Sensor failure, Door ajar, Power failure, Voltage abnormal, Ambient temperature abnormal, Low voltage, Filter blocking	
Refrigeration type	Direct refrigeration		
Refrigerant	Mixture refrigerant	Mixture refrigerant	Mixture refrigerant
Compressor	1 set	2 set	1 set
Condenser&Evaporator	Made of Copper		
Construction Structure	Unibody design & Mono-assembly foaming (Rigid polyurethane insulation material)		
Construction Internal Material	SS 304		
Construction External Material	Cold-rolled steel with anti-bacteria powder coating		
Door	Lockable door		
Caster	4 casters		
Chamber with Inner Door	3	4	4
Shelf	2 pcs	3 pcs	3 pcs
Temp. Test Port	1, φ30mm	1, φ25mm	1, φ25mm
Consumption	480W	870W	735W
Power Supply	AC110V/220V±10%, 50/60Hz	AAC2200V±10%, 50/60Hz	
Standard Accessory		72 hours battery Backup for power failure alarm	
Optional Storage Racks and Boxes		12 racks: 4x4 192 Boxes	8 racks: 5x4; 8 racks: 4x4 288 Boxes
Package Size (WxDxH)mm	800x780x1720	935x1070x2128	954x955x2094
Gross Weight	155 Kg	306 Kg	293 Kg



100L



398L/528

Technical Parameters

MODEL	86V100	86V398	86V528
External Size (WxDxH)mm	1066x742x820	785x1041x1947	930x1041x1947
Internal Size (WxDxH)mm	450x439x514	440x696x1266	585x696x1266
Capacity	100L	398L	528L
Type	Vertical		
Temp. Range	-10 ~ -86°C		
Temp. Accuracy	0.1°C		
Control System	Microprocessor control, Large Screen, LED Display	High-precision microprocessor control, Capacitive touch control screen	Microprocessor control, LCD touch screen
Audio and Visual Alarm	High and low temperature, System failure, Door ajar, Sensor failure, Low voltage, Filter blocking: Power failure		
Refrigeration type	Direct refrigeration		
Refrigerant	Mixture refrigerant		
Compressor	1 set		
Condenser&Evaporator	Made of Copper		
Construction Structure	Unibody design, two time foaming technology, 100~155mm foaming insulation, with VIP+		
Construction Internal Material	SS 304	Galvanized sheet spraying	SS304
Construction External Material	Cold-rolled steel with anti-bacteria powder		
Door	Lockable door		
Caster	4 casters		
Chamber with Inner Door	2	4	
Shelf	2 pcs	3 pcs	3 pcs
Temp. Test Port	1, φ25mm	2, φ25mm	
Consumption	1000W	980W	1050W
Power Supply	AC110V/220V±10%, 50/60Hz		
Standard Accessory	Temperature printer, record 7 days data, 72 hours battery backup for printer and controller display	USB port	
Optional Back-up System	CO ₂ Back-up system		
Accessory Storage Racks and Boxes	3 racks: 4x3; 3 racks: 3x3 63 Boxes	12 racks:5x5 300 Boxes	16 racks: 5x5 400 Boxes
Package Size (WxDxH)mm	11080x825x995	880x1150x2085	1025x1150x2085
Gross Weight	176 Kg	287 Kg	336 Kg

SMALL LABORATORY INSTRUMENTS

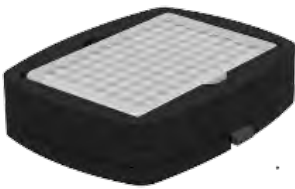


Vortex mixer

PKL PPC VM-A1

Delivers upto 2800 RPM for instant Vortex action
Orbital diameter for 4 mm
Long life brushless AC motor fitted with ball bearings
ON/OFF/Touch operation modes -
optional adaptors available
Inbuilt counter balance design ensures
No walking issues
IP 21 class protection
Small footprint with Die cast base for stable operation
Standard Accessories included:
VM-A7 + VM-A6
Conical tube attachment & Round Disk attachment

Optional Accessories: common for pkl ppc vt & pkl ppc models



VM-A3

Microplate attachment for one 96 well plate (with base)



VM-A2

Tube attachment for 20 tubes (with base)



VM-A6

Round Disk attachment (with base)



VM-A4

Flask holder attachment (with base)



Digital Multitube Vortex

PKL PPC MV

BLDC motor for maintenance free long life. Speed setting from 300 to 2500 RPM. Long timer range (1 to 999 minutes & infinite mode). Adjustable speed & time setting with Digital display. Orbital diameter of 4 mm for proper mixing. Programmable Pulse mode feature for proper mixing (run-stop-run). Choice of Clockwise and Counter clockwise motion. Multiple attachments to use different shapes and size of vessels. Fits almost all tube rack. Maximum capacity of 4.5 kg.

Standard Accessories included:

VM-M3, VM-M2, VM-M1, VM-M4 & VM-M6

attachments are supplied along with the instrument.



VM-M3

Attachment for 60 x 7 ml tubes



VM-M2

Attachment for 45 x 15 ml tubes



VM-M1

Attachment for 18 x 50 ml tubes



VM-M4

Attachment for 6 x 250 ml flasks



VM-M6

Attachment for 72 x 1.5/2.0 mL tubes



VM-M7

Foam attachment (horizontal-50ml tube) for QuEChERS test



Basic Tube Roller with 4 rollers

PKL PPC RnR4

AC synchronous motor for noiseless operation.
Gentle Rocking & Rolling motion for better homozination.
Fixed speed of 30 RPM with speed accuracy of +/- 2 RPM.
Continuous / infinite mode of operation.
Tool free removable rollers for easy cleaning.
Tilt angle of +/- 3°.
Adjustable rollers spacing to hold different diameter tubes.
Robust construction for stable operation



Basic Disc Rotator

PKL PPC BL08VT

8 x 1.5/2.0 ml micro tubes closed Rotor
Variable Speed
(500 to 6000 RPM & and Timer setting feature
Brushless DC motor for efficient performance with low noise (<55 dB)
High efficiency ± 25 RPM (self correcting at changing loads)
Unique closed rotor design for reduced friction
Sensor based imbalance detection
Smart Robust Design for long life with digital Display Electronic Safety Brake (on lid opening)



Plate Rotator

PKL PPC PR22

AC synchronise motor for noiseless operations
Robust construction with strong metal design
Fixed RPM of 30 with +/- 2 RPM of accuracy
Maximum loading capacity of 1kg
Continuous & infinite mode of operation
Easy to remove and install plates for replacement and cleaning.

Standard Accessories included:

1 Plate attachment along with clamps
(Select 1 from below while ordering)

Plate Options for PKL PPC PR22



P4-12

Plate: 12 x 15 ml + 4x50 ml

C50

50ml tube clamp, suitable for plate P4-12, if ordered additionally

P5-22

Plate: 22 x 15 ml

C15

15 ml tube clamp, suitable for plate P4-12 & p5-22, if ordered additionally



Motor Less Magnetic Stirrer

PKL PPC Uno

Motor less - truly maintenance free with no moving parts
Speed setting from 15 to 1500 RPM with digital display
Compact design - low aspect ratio - just 13.4 mm thick
Microprocessor controlled gradual speed acceleration
Pulse mode feature - changes direction for proper mixing result. Stainless Steel top surface for corrosion resistance. IP 65 protected design. Timer setting feature from 1 to 99 mins & infinite model. 800 ml capacity - suitable for stirrer bar upto 25 mm length.

Standard Accessories included: 1 high strength Magnetic Stir Bar (25 x 8 mm).

Optional Accessories: MS01-B1 Stir Bars (25 x 8 mm): 100 units per Pack



High Capacity Stirrer

PKL PPC Uno +

Slim (29 mm only) single position Stirrer with 10 litre capacity. Brushless DC motor for maintenance free long life. Set speeds from 200 RPM to 2200 RPM and Timer upto 999 min. Pulse mode for CW and CCW direction change for thorough mixing. Microprocessor controlled with gradual acceleration. Corrosion resistant Stainless Steel Top surface. IP 44 class ingress protection (spill safe). Last run Memory feature

Standard Accessories included:

Supplied with 1 High Strength Stir bar (35 mm).

Optional Accessories: B4 Stir Bar: 35 mm length
1 high strength Magnetic



High Capacity Stirrer Multi Position

PKL PPC Penta +

Slim 5 position Stirrer with 2 litre per station capacity (Total 10 Litres). Brushless DC motor for maintenance free long life. Set speeds from 100 RPM to 2200 RPM at every 10 RPM. Long Timer upto 99 hrs 59 min and infinite mode. Pulse mode for CW and CCW direction change for thorough mixing. Microprocessor controlled with gradual acceleration. Corrosion resistant Stainless Steel Top surface Last run Memory feature. IP 42 class ingress protection (spill safe). **Standard Accessories included:** Supplied with 5 High Strength Stir bar (35 mm)
Optional Accessories: n **B4** Stir Bar: 35 mm length



Magnetic Stirrer

PKL PPC MS10a

Noiseless and powerful brushless DC motor / Variable Speed setting from 200 to 2200 RPM / can Stir upto 10 Litre media / Stainless Steel top surface for corrosion resistance closed design allows easy cleaning & protects the equipment from accidental spills comes with non-slip strength rubber feet for maximum stability at high-speeds / small footprint saves valuable bench space / comes with an IP42

class compliant rating for unmatched durability.

Standard Accessories included: 1 high strength Magnetic Stir Bar (25 x 8 mm)

Optional Accessories: MS01-B1 Stir Bars (25 x 8 mm): 100 units per Pack



Magnetic Hot Plate Stirrer up to 320°C

PKL PPC HP 320a

Chemical resistant ceramic coated SS top
Powerful DC Motor for upto 10 litre Stirring capacity
Temperature range from ambient to 320 °C
Speed setting from 200 to 2200 RPM
2 separate knobs for easy setting of Speed & temperature.

Standard Accessories included:

1 high strength Magnetic Stir Bar (25 x 8 mm)

Optional Accessories:

MS01-B1 (common for PKL PPC HP 320 & PKL PPC HP320a)

Magnetic Digital Hot Plate Stirrer up to 320°C

PKL PPC HP 320

3 Top plate Options (Ceramic Coated, Stainless Steel or Aluminium)-Select any 1 / Powerful Motor for upto 10 litre Stirring capacity / Temperature range from ambient to 320 °C

Speed setting from 200 to 2200 RPM steps of +- 10 RPM

Run time - 1 to 999 minutes and infinite mode

Max loading Capacity of 10 litres / Microprocessor controller with last run memory feature / Large and clear display for critical parameters for easy reading.

Standard Accessories included:

HS20-B1 1 high strength Magnetic Stir Bar (25 x 8 mm)

HS20-T2 Temperature sensor probe PT 1000

HS20-S2 Support stand with boss head clamp for PT 1000 sensor probe

Optional Accessories: (common for PKL PPC HP 320 & PKL PPC HP320a)



QP Carrying plate



Q20 Quarter reaction block- 4 Position x 20ml suitable with QP carrying plate



Q30 Quarter reaction block- 4 position x 30ml suitable with QP carrying plate



Q16 Quarter reaction block- 7 position x 16ml suitable with QP carrying plate



Q8 Quarter reaction block - 10 position x 8ml suitable with QP carrying plate



Q4 Quarter reaction block- 12 position x 4ml suitable with QP carrying plate



RB500 500ml reaction block - (also available for smaller reaction vessels)



S2 Support stand with boss head clamp for PT 1000 sensor probe (only for PKL PPC HP320)



T2 PT 1000 sensor (only for PKL PPC HP320). MS01-B1 Stir Bars (25 x 8 mm): 100 units per Pack



Magnetic Hot Plate Stirrer up to 350°C

PKL PPC HP 350

Powerful BLDC motor for maintenance free long life
Temperature range from ambient to 350 °C / Speed setting from 200 to 2200 RPM / Max loading Capacity of 20 litres
Easy to operate interface with independent control with no shared display / Chemical resistant Nano crystal glass ceramic top plate / User Programmable – allows setting upto 99 user defined programs / 3 heating modes selection for rapid, gradual & accurate heating as per need / Pulse mode Clockwise-Counter Clockwise interchange / Hot surface warning & Error indication features. **Standard Accessories included:** 1 high strength Magnetic Stir Bar (25 x 8 mm)
Optional Accessories: (common for HP 350 & HP 550)



Magnetic Digital Hot Plate Stirrer up to 350°C

PKL PPC HP 550

Powerful BLDC motor for maintenance free long life
Temperature range from ambient to 550 °C / Speed setting from 200 to 2200 RPM / Max loading Capacity of 20 litres
Easy to operate interface with independent control with no shared display / Chemical resistant Nano crystal glass ceramic top plate / User Programmable – allows setting upto 99 user defined programs / 3 heating modes selection for rapid, gradual & accurate heating as per need
Pulse mode Clockwise-Counter Clockwise interchange
Hot surface warning & Error indication features
Standard Accessories included:
1 high strength Magnetic Stir Bar (25 x 8 mm)
Optional Accessories: (common for HP 350 & HP 550)

Common optional accessories for HP 350 & HP 550 & HP 550 prime:



T1
Temperature sensor
probe PT 1000



T2 Support stand
with boss head clamp
for PT 1000 sensor probe



Magnetic 5 positions Stirrer

PKL PPC 5M

Consistent synchronized Stirring across all positions
BLDC motor for maintenance free long life
Digital display for ease of operation
Speed setting from 300 to 1500 RPM
Maximum capacity of 2 litres - 5 x 400 ml
Timer setting from 1 to 999 minutes & infinite mode
Programmable Pulse mode feature for vigorous mixing
IP 42 protected design / Closed design allows easy cleaning and avoids penetration of liquids.

Standard Accessories included: 1 high strength Magnetic Stir Bar (25 x 8 mm) **Optional Accessories:** **MS01-B1** Stir Bars (25 x 8 mm): 100 units per Pack



Magnetic 5 positions Hot Plate Stirrer

PKL PPC HP 5M

BLDC motor for maintenance free long life / Digital display for ease of operation / Temperature range from ambient to 120 ° C / Speed setting from 300 to 1500 RPM
Consistent synchronized Stirring across all positions
Maximum capacity of 2 litres - 5 x 400 ml / Timer setting from 1 to 999 minutes & infinite mode / Pulse mode feature for vigorous mixing / Superior safety with waterproof heater with in built cut-off. **Standard Accessories included:** 1 high strength Magnetic Stir Bar (25 x 8 mm) **Optional Accessories:** **MS01-B1** Stir Bars (25 x 8 mm): 100 units per Pack



High Capacity Stirrer 25 L

PKL PPC HP 5M

Capacity of upto 25 litres / BLDC motor for maintenance free long life / Digital display for ease of operation
Speed setting from 200 to 2200 RPM / Stainless Steel set up area for better corrosion resistance / Timer setting upto 999 minutes & infinite mode / Programmable Pulse mode feature for vigorous mixing / IP 42 class ingress protection
Closed design allows easy cleaning and avoids penetration of liquids. **MS01-B1** Stir Bars (25 x 8 mm): 100 units per Pack



High Capacity Stirrer 50 L

PKL PPC 50L

Capacity of upto 50 litres / BLDC motor for maintenance free long life / Digital display for ease of operation / Speed setting from 100 to 1000 RPM with accuracy of 10 RPM / Stainless Steel set up area for better corrosion resistance / Timer setting upto 99 hours & 59 minutes / Selectable acceleration rates (A1 to A9)

Programmable Pulse mode feature for vigorous mixing / IP 21 class ingress protection / Closed design allows easy cleaning and avoids penetration of liquids

Standard Accessories included:



SF Support Frame



R1 Remote pendant

B2 Stir bar for 50L length 80 mm



High Capacity Stirrer 50 L

PKL PPC 200L

Capacity of upto 200 litres / BLDC motor for maintenance free long life/ Stainless Steel set up area for better corrosion resistance / Speed setting from 100 to 600 RPM with accuracy of 10 RPM / Timer setting upto 99 hours & 59 minutes / Selectable acceleration rates (A1 to A9) / Programmable Pulse mode feature for vigorous mixing / IP 21 class ingress protection / Closed design allows easy cleaning and avoids penetration of liquids.

Standard Accessories included:



SF Support Frame



R1 Remote pendant

B2 Stir bar for 50L length 80 mm



OH Jr. Overhead Stirrer

PKL PPC OH Jr.

Brushless DC motor for efficient performance with low noise / Microprocessor controlled for consistent accuracy with viscous liquids / stir viscosity up to 1000 mPas or 10L volume capacity (equals to 10L water) / Adjustable speed ranging from 50 up to 2200 RPM / Safety cut for overload Plug & play design for easy usage / IP 42 class protected

Standard Accessories:

Cross blade impeller (50 x 8x 300 mm)

Plate stand

Boss head



Prime Overhead Stirrer

PKL PPC Prime Series

Overhead Stirrer

Powerful BLDC motor for maintenance free long life torque upto 40Ncm / Speed setting from 50 upto 2000 RPM / Max loading Capacity upto 40 litres / Easy to operate interface with independent control with no shared display / viscosity upto 30000 mPas / smart controlled operation / timer upto 99 hours and 59 minutes and infinite operation mode / Clockwise-Counter Clockwise interchange / power intermittent mode / The Stand, Boss head & Impeller needs to be purchased separately. (refer below)



PKL PPC OH 8P

8 Ncm, 10 litre capacity,
up to 2000 RPM, 4000 mPas

PKL PPC OH 15P

15 Ncm, 20 litre capacity,
up to 1000 RPM, 8000 mPas

PKL PPC OH 20P

20 Ncm, 25 litre capacity,
up to 2000 RPM, 10000 mPas

PKL PPC OH 40P

40 Ncm, 40 litre capacity,
up to 1000 RPM, 30000 mPas



Elite Overhead Stirrer

PKL PPC Elite Series Overhead Stirrer

Powerful BLDC motor for maintenance free long life torque upto 100Ncm / Speed setting from 50 upto 2000 RPM / Max loading Capacity upto 100 litres
Easy to operate interface with independent control with no shared display / viscosity upto 70000 mPas
smart controlled operation / timer upto 99 hours and 59 minutes and infinite operation mode / Clockwise-Counter Clockwise interchange / power intermittent mode
The Stand, Boss head & Impeller needs to be purchased separately. (refer below)



PKL PPC OH 50E

50 Ncm, 50 litre capacity,
up to 2000 RPM, 30000 mPas

PKL PPC OH 100E

100 Ncm, 100 litre capacity,
up to 1300 RPM, 70000 mPas

PKL PPC OH 75

75 Ncm, 75 litre capacity,
up to 2000 RPM, 50000 mPas

IMPELLER



Cross-Welded Impeller
50 x 12 x 250 mm
Shaft Length **250mm**



Cross-Welded Impeller
50 x 12 x 350 mm
Shaft Length **350mm**



Straight Blade Impeller
35 x 12 x 350 mm
Shaft Length **550mm**



Straight Blade Impeller
50 x 12 x 550 mm
Shaft Length **550mm**



Pivoting Blade Impeller
60 x 15 x 550 mm
Shaft Length **550mm**



Collapsible Blade Impeller
550 mm Shaft Length
550mm



Square Blade Impeller
38 x 38 x 550 mm
Shaft Length **550mm**



Square Blade Impeller
70 x 70 x 800 mm
Shaft Length **800mm**



Anchor Blade Impeller
50 x 50 x 550 mm
550mm



Anchor Blade Impeller
100 x 100 x 800mm
Shaft Length **800mm**



Paddle Blade Impeller
70 x 70 x 550mm
Shaft Length **550mm**



Paddle Blade Impeller
70 x 70 x 800mm
800mm



Paddle Blade Impeller
70 x 80 x 550 mm
Shaft Length **550mm**



Paddle Balde Impeller
70 x 80 x 800 mm
Shaft Length **800mm**



A01 Propeller Impeller
50 x 8 x 350 mm
Shaft Length **250mm**



A02 Propeller Impeller
100 x 8 x 550 mm
Shaft Length **550mm**



A03 Propeller Impeller
130 x 8 x 800 mm
Shaft Length **800mm**



OHS1-PS-560

Plate Stand 220 mm x 320 mm with rod height of 575 mm (Max. load 5 litres)

OHS1-PS-800

Plate Stand 220 mm x 320 mm with rod height of 825 mm (Max. load 5 litres)

OHS1-PS-1000

Plate Stand 220 mm x 320 mm with rod height of 1025 mm (Max. load 5 litres)



OHS1-PBH Boss head Clamp for plate stand (common for all rod lengths)



OHS-HS H Stand Stand 500 x 450 x 1020 mm without boss head clamp



OHS-HBH Boss head Clamp for H-Stand



OHS-C1 Chuck



Digital Microplate Shaker

PKL PPC BL Uno VT

Smallest footprint as small as the microplate itself
Variable Speed (300 to 1800 RPM) and Timer from 0 to 99 mins. Orbital diameter of 2 mm for proper mixing in all wells. Brushless DC Motor for silent operation and long life
Toggle clamp for easy & spill free loading/unloading of microplate. Rubber suction cups for firm surface grip.

Standard Accessories included:

PS01-A1 Tube attachment-20 tubes capacity

PS01-C1/C2 Clamps for different types of plates

*Optional USB connectivity with remote operation can be provided on request (additional cost may apply)



Digital Microplate Shaker

PKL PPC OH Jr.

Brushless DC motor for efficient performance with low noise / Microprocessor controlled for consistent accuracy with viscous liquids / stir viscosity up to 1000 mPas or 10L volume capacity (equals to 10L water) / Adjustable speed ranging from 50 up to 2200 RPM / Safety cut for overload Plug & play design for easy usage / IP 42 class protected

Standard Accessories:

Cross blade impeller (50 x 8x 300 mm)

Plate stand

Boss head



Digital 4 Plate Shaker

PKL PPC Quattro

BLDC motor for maintenance free long life
Digital display with microprocessor control
Speed setting from 200 to 1200 RPM
Orbital diameter of 3 mm for proper mixing
Timer : 1 min to 999 mins & continuous mode
Pulse mode feature - changes direction for proper mixing result / Designed for gradual speed increment to avoid spillage issues / Accommodates upto 4 Microplates (can be used with Culture plates as well)



Incubated Microplate Shaker

PKL PPC TS4

Temp (Incubation range) from Ambient + 3 °C to 70 °C
Maintenance free BLDC Motor drive
Speed of upto 1200 RPM
Orbital Motion of 3 mm die
Digital Display for shows Set and Actual Temperature
Programmable Pulse mote for alternating CW and CCW motion
Timer range of 1 min too 99.59 hrs + infinite mode
Accommodates upto 4 Microplates



3 Digital 3 D Shaker (Rocker)

PKL PPC 3D-3

STumbling rocking motion (7 deg. tilt) for optimum mixing for upto 3 kg load / Speed range of 15 to 80 RPM for gentle to fast motion and Timer function / Long life BC motor with Microprocessor control & digital display / Platform size of 307 x 267 mm - with spiked mat / Programmable Pulse mode for alternating clockwise & counter clock wise motion Favourite mode (programmable) - upto 9 user defined programs / IP 21 class protection with removable platform for ease of cleaning. **Standard Accessories included:**
TSpiked Rubber Mat
M3-2 (Optional) - Sticky pad



5 Digital 3 D Shaker (Rocker)

PKL PPC 3D-5

Suitable for the mixing of upto 5kg Capacity
Tumbling rocking motion -7 deg. tilt / Speed range of 5 to 120 RPM for gentle to fast motion and timer function
Long life BDLC motor with Microprocessor control & digital display / Unique Run Pause Run mode, user can set 30 to 99 sec / Platform size - 307 x 267 mm - with spiked mat
User can set and save upto 9 user defined programs
IP 21 class protection with removable platform for ease of cleaning / Standard Accessory included:
Standard Accessories included: Spiked Rubber Mat



- M3-1** Spiked rubber mat (Standard)
- M3-2** (Optional) - Sticky Mat
- M3-3** Stacking/ double decker platform with 4 posts and spiked rubber mat.



PS 10 / 20 - Platform Shaker upto 7.5 kg (2 Versions - Orbital & Linear)

PKL PPC PS 10 / 20

Available in linear & orbital motion models with 10 mm / 20 mm movement / Unique User defined programming feature / BLDC motor for maintenance free long life

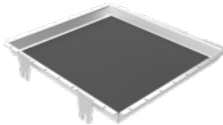
Speed range 50-500 RPM for 10 mm motion & 50-300 RPM for 20 mm motion / Pulse mode Clockwise-Counter Clockwise interchange / **(10 / 20 -O = Orbital)** Digital display with Min-hour timer - 1 min to 99 hours & 59 mins / Low height spill safe design - IP 21 class protection / **(10 / 20 -L = Linear)** / Platform size of 330 x 330 mm (Max 7.5 kg load capacity) / May different attachments to choose from (list below).

**Platform Shaker attachments
(needs to order separately)**



UA-01

Universal platform with adjustable bars (Flask capacity- 13 x 100ml / 13 x 150ml / 9 x 250ml / 6 x 500 ml / 5 x 1000ml)



DA-01

Disk attachment Base plate with slip resistance tray



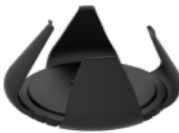
FA-01

Funnel Attachment



SH01-PPC

Base plate for plastic clamps (Capacity- 9 clamps x 250ml / 9 clamps x 500ml).
Clamps not included



SPC-1

Plastic clamp for 250 ml flask suitable for SH01-PPC
BPC-1
Plastic clamp for 500 ml flask SH01-PPC



SH01-SSP-250

Base plate for SS clamps (Capacity- 9 clamps x 100ml / 9 clamps x 150ml / 9 clamps x 250ml).
Clamps not included

**PSC-100**

Stainless steel Clamp for 100 ml flask suitable for base plate SH01-SSP-250

SC-150

Stainless steel Clamp for 150 ml flask suitable for base plate SH01-SSP-250

SC-250

Stainless steel Clamp for 250 ml flask suitable for base plate SH01-SSP-250

**SSP-500**

Base plate for SS clamps (Capacity- 9 clamps x 500ml / 5 clamps x 1000ml) .

Clamps not included

**SC-500**

Stainless steel Clamp for 500 ml flask suitable for base plate SH01-SSP-500

SC-1000

Stainless steel Clamp for 1000 ml flask suitable for base plate SH01-SSP-500



US 15 - Platform Shaker upto 15 kg (2 Versions - Orbital & Linear)

PKL PPC US 15

Available in linear & orbital motion models with 30 to 60 mm movement. BLDC motor for maintenance free long life. Max Capacity of 15 Kg with 745 x 490 mm platform size. Speed range 50 to 300 RPM / Clockwise-Counter Clockwise interchange / (30 to 60 mm O = Orbital) Digital display with Min-hour timer - 1 min to 99 hours & 59 mins. Unique User defined programming feature (30 to 60 mm-L = Linear) Low height spill safe design - IP 21 class protection / Select attachment (s) from following list: **(not supplied as standard accessory)**.

**PKL PPC US 15 Shaker attachments
(needs to order separately)**



UA-15

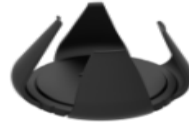
Universal platform with adjustable bars (Flask capacity- 44 x 100ml / 40 x 150ml / 36 x 250ml / 25 x 500 ml / 13 x 1000ml)



SH02-PPC

Base plate for plastic clamps (Capacity 24 x 250 ml / 24 x 500 ml)

Clamps not included



SPC-1

Plastic clamp for 250 ml flask suitable for SH01-PPC

BPC-1

Plastic clamp for 500 ml flask SH01-PPC



SSP-250

Base plate for SS clamps (Capacity 24 x 100 ml / 24 x 150 ml / 24 x 250 ml)

Clamps not included



SC-100 Stainless steel

Clamp 100 ml flask suitable for Base Plate SSP-250

SC-150 Stainless steel

Clamp 150 ml flask suitable for Base Plate SSP-250

SC-250 Stainless steel

Clamp 250 ml flask suitable for Base Plate SSP-250



SH02-SSP-500

Base plate for SS clamps (Capacity 24 x 500 ml / 8 x 1000 ml)

Clamps not included



SC-500

Stainless steel Clamp 500 ml flask suitable for Base Plate SH02-SSP-500

SC-1000

Stainless steel Clamp 1000 ml flask suitable for Base Plate SH02-SSP-500



Jr. Homogenizer

PKL PPC Jr.

Can process upto 3 samples of 2 ml. / Powerful motor for optimum output. / Homogenizes - Bacteria/yeast cells, Plant and Animal and Bone Tissues samples. / Design ensure lesser heat generation and is convenient to load/unload samples / Agitation speed range from 2800-4000 / Integrated lid lock for preventing lid from opening during run / Easy user interface with Large digital display / Variable cyclic intervals for effective homogenization through pulse mode



24P Homogenizer

PKL PPC 24P

Agitation speed range of 0.08 to 7.50 m/s in steps of 0.05 m/s (upto 4550 RPM). Powerful BLDC motor for maintenance free long life / Homogenizes most samples - Bacteria/yeast cells, Plant and Animal and Bone Tissues. Design ensure lesser heat generation and is convenient to load/unload samples.

Can process upto 24 samples of 2 ml OR upto 12 samples of 5 ml / User programmable - user can save and run upto 99 user defined programs / Integrated lid lock for preventing lid from opening during run / Easy user interface with Large digital display /

Variable cyclic intervals for effective homogenization

includes any 1 Sample holding plate (1/5/2 ml OR the 5 ml plate).

(Select any one sample place holder from below while ordering)

CH01-AT1 Sample place holder & lid for 24 x 1.5/2 ml

CH01-AT2 Sample place holder & lid for 12 x 5 ml

Optional Accessories (common for PKL PPC 24P & PKL PPC Jr. models)

CH01-A01 2 ml Tube PKL PPC (non sterile)

Pack size 1000

CH01-A02 ϕ 0.4-0.6 mm Glass Beads

Pack size 200 gms

CH01-A03 ϕ 0.8-1.2 mm Glass Beads

Pack size 200 gms

CH01-A04 ϕ 2.5-3.0 mm Glass Beads

Pack size 200 gms

CH01-A05 ϕ 1.0-1.2 mm Zirconium(94%) Beads

Pack size 200 gms

CH01-A06 ϕ 1.4-1.7 mm Zirconium(94%) Beads

Pack size 200 gms

CH01-A10 ϕ 2.6-3.3 mm Zirconium(94%) Beads

Pack size 200 gms

CH01-A11 ϕ 2mm SS Beads

Pack size 200 gms

CH01-A12 ϕ 3 mm SS Beads

Pack size 200 gms



Dry Bath

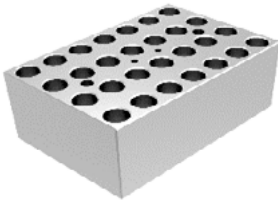
PKL PPC D150-2

CDry heating with temp setting from Amb +5 to 120 deg C
Rapid heating and constant temperature across the block
Digital Display for Temp and Run time - 1 min too 99.59
hrs + infinite mode Timer / Programming feature - allows
user to set up to 99 user defined programs (protocols)

Aluminium blocks, resistant to Chemical spillage and temperature shocks / Various types of Tube capacity. / Corrosion free SS top plate and heating wells

Standard Accessories included: 1 block of 28 x 1.5/2 ml + 1 Hybrid Block (9 x 1.5/2ml, 32 x 0.2 ml & 20 x 0.5 ml tubes) **PT 1000** Temperature Probe. / Block Lifter

Optional Accessories to be purchases separately



DB01-B2

Block for micro tubes
(28 x 1.5/ 2 mL)



DB01-B1

Hybrid Block (9 x 1.5/2ml, 32 x 0.2 ml
& 20 x 0.5 ml tubes)



DB01-B3

12 Tubes x 15 ml Block



DB01-B4

5 Tubes x 50 ml Block



CH25 - Cooling & Heating Incubator

PKL PPC CH25

Digital Temperature control from Ambient -15 °C to 60 °C

Compact footprint, usable on small bench space

Accepts multiple types of flasks up to 2L

Internal power outlet for installing small shaker, mixer or other instruments / Temperature accuracy 0.5 °C (at 37 °C)

Temperature uniformity is 1.5°C / Temperature Increments 1°C

Capacity 25L / Weight 6.5 kg



BLOOD BANK INSTRUMENT LINE



Blood Collection Chair

Features:

Manual or electric control type for your choice.

Made of high-strength fiber material and poly-layer paint, more durable, easy to clean.

Designed with people-oriented idea, to meet the donor's sense of security and comfort, to alleviate the psychological pressure, to ensure an easier and enjoyable process.

Mattress using a high-quality medical polyurethane

foam molding leather, easy for clean and maintenance, anti-static and anti-fouling properties superior to other similar products.

Technical Parame

Model

PKL PPC BK-BC100

PKL PPC BK-BC100A

Seat Section Size(mm)	1800*580	
Seat Section Height(mm)	500	
Backing Board Turning Angle	20°-70°	
Chair Backward and Forward Tilt Angle	8°-15°	
Leg Plate Turning Angle	20°-75°	
Handrail Swing Out Angle	0°-30°	0°-45°
Handrail's Moving Distance	100mm	
Handrail Board Size	450*160mm	500*160mm
Lifting Speed	No	3-25mm/s
Power Supply	No	AC110/220V±10%, 50/60Hz
Reading Lamp Power	No	60W
Standard Accessories	Hand operation, handrail rack, small table	
Optional Accessories	LED hose-type reading lamp; movable assistant desk;	
soft velvet cover		
Load Capacity	160kg	
Packing Size(W*D*H)	1300*780*1330mm	
Gross Weight	65kg	71kg

Please note the package size is same for 1 unit or 2 units. For 2 units, the gross weight is 115kg for PKL PPC BK-BC 100 and 127kg for PKL PPC BK-BC 100A.

Blood Collection Monitor



BCM-12A



BCM-12B

Features:

Unique modern sensor and LED display. / Preset volume of blood collection function. Taring and calibrating function, ensure measuring accuracy. / Soft shaking mode, improving the survival of effective components in the blood. / Shaking auto stops when bags are taken away during collection and restart working after bags / are remounted. / If collection volume is preset, the balance will stop shaking when there is 10ml gap and get into accurate measuring status. Automatic alarm when reaching the preset value. / Humanization design and reasonable structure is convenient for operation.

Technical Parameters

Model

PKL PPC BCM-12A

PKL PPC BCM-12B

Measuring Range	0-1200ml	
Measuring Accuracy	2%	
Display Accuracy	1ml	
Liquid Proportion	1.05g/ml	
Collection Speed	0.5-3ml/s	
Swing Frequency	30-32 r/min	
Swing Angle	13±2°	
Alarm	Audio and visual alarm	Audio and visual alarm with
Interrupter Thrust	--	S14N
Consumption	12W	40W
Power Supply	AC110/220V±10%, 50/60Hz	
External Size(W*D*H)	218*172*160mm	275*230*210mm
Packing Size(W*D*H)	310*260*210mm	350*270*260mm
NeUGross Weight	2.8kg/4.1kg	3.3kg/4.6kg

Blood Bag Tube Sealer

Application: The blood bag tube sealer is a compact equipment to seal the blood bags, infusion bags, urine bags by high frequency sealing system. It's widely used in blood-bank, hospital, biological industry, etc. **Features:** No hemolysis. / With suction feet to avoid moving, can be used in blood collecting vehicle.

Technical Parameters:

Model

PKL PPC-BTS1

Sealing time	0.8-1.2s
Sealing type	Automatic
Diameter of tube	02-6mm (tube wall thickness1mm)
Power Supply	AC110V/220V±10%, 50/60HZ
External Size (W*D*H)	320*180*130mm
Package Size (W*D*H)	410*210*210mm
NeUGross Weight	5kg/6kg



Blood Plasma Extractor

Application: Plasma Extractor is designed to extract blood component from centrifuged bags. It is widely used in Hospital, blood station, etc. After the Plasma layering, different components of blood can be extruded from top to bottom by pressure of plasma-separating clip. **Features:** Manual system. / Easy to observe the separation of the plasma and red blood cells.

Technical Parameters:

Model

PKL PPC BPE-1

Clamping Force	20N
Applicable Blood Bag	100ml, 200ml, 300ml, 400ml
Material	Stainless Steel
External Size(W*D*H)	165*250*250mm
Package Size(W*D* H)	310*310*240mm
NeUGross Weight	2.5kg/2.8kg



Blood Thaw Machine

Application: The blood bag tube sealer is a compact equipment to seal the blood bags, infusion bags, urine bags by high frequency sealing system. It's widely used in blood-bank, hospital, biological industry, etc. **Features:** No hemolysis. / With suction feet to avoid moving, can be used in blood collecting vehicle.

Technical Parameters:

Blood thaw machine is used for thawing or warming blood components packed in plastic bags such as frozen plasma, erythrocyte concentrate and whole blood.

Features:

- Stainless steel chamber and fences, decomposable water tank.
- With automatic drying function, reducing the immersion time.
- With over temperature alarm and automatic power-off function.
- Water circulation system ensures finish thawing procedure rapidly.
- Built-in dual thermometer detection, alarm for exceeding temperature range 36.5-38°C.
- With temperature control and sensing system to achieve a high temperature-contrai accuracy.
- With scanning bar code function. (Standard for BTM-6, Optional for BTM-12 & BTM-24)



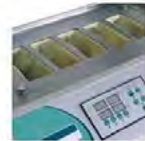
Scanning bar code



Swing type



Basic type



Isolated water type

Model

Blood Bags (50-200ml)
Water Storage
Thaw type

PKL PPC BTM-6

Max.6 pcs
20 Kg±5%
Swing

PKL PPC BTM-12

Max.12 pcs
58 Kg±5%
Standard: Basic type
Optional: Swing type and isolated water type

PKL PPC BTM-24

Max.24 pcs
98 Kg±5%

Temp. Range
Temp. Accuracy
Thawing Time

36.5-38°C
±0.2°C
10-15min

±0.1°C
8-10min

Consumption
Power Supply

1KW
AC220V, 50/60Hz

2KW

3.6KW

External Size (W*D*H)
Package Size (W*D*H)
Gross Weight

550*500*475mm
750*700*680mm
40kg

600*540*970mm
800*750*1200mm
70kg

720*600*990mm
900*800*1200mm
100kg

Gel Card Incubator

Application: Gel card incubator is matched with our gel cards centrifuge to use and holds 2 independent incubation zones with a capacity for 12 gel cards. It can be suitable for many types of gel cards from different manufacturers.



Features:

Keep 24-Gel Cards in temperature of 37 degree.

LED display, time can be set.

Audible programmable alarm to notify end of incubation period.

Microprocessor PIO temperature control, accurate and stable.

Technical Parameters:

Model

PKL PPC BK-GCI24

Capacity	24 cards
Temperature	37°(
Temperature Accuracy	<0.5°C
Temperature Uniformity	±0.5°(
Time Range	0-99min59s
Consumption	250W
Power Supply	AC110/220V±10%, 50/60Hz
External Size(W*D*H)mm	280*390*140
Package Size(W*D*H)mm	445*335*190
Net/Gross Weight(kg)	6.2/8

Gel Card Centrifuge

Application: Gel card centrifuge is used in blood serology, blood type routine test, erythrocyte washing, microcolumn agglutination, immunology and other tests.

Features:

DC Brushless motor, low noise.

Microprocessor control system & soft touch control panel.

LCD display: RCF, Speed, Time.

Electric lid interlock, over speed and imbalance protection.

20 programs for standard and programmability are available.



Technical Parameters:

MODEL	PPC-GC12	PPC-GC24
Max. Speed	3000rpm	
Max. RCF	830xg	1080xg
Rotor	12 cards	24 cards
Speed Precision	±20rpm	
Time Range	0-99min	
Noise	≤55dB	
Power Supply	AC110/220V±10%, 50/60Hz	
External Size(W*D*H)mm	483*320*265	528*370*280
Package Size(W*D*H)mm	560*380*330	610*435*340
Gross Weight(kg)	24	30

Platelet Incubator

Features:

1. Power on/off switch, more convenient for operation.
2. UV lamp for disinfection, the interlock function for UV lamp and door.
3. Microprocessor temperature control, high accuracy sensor, LCD display.
4. High efficiency refrigeration system, fast cooling speed and uniformity temperature inside.
5. Double-layer glass observation window, filled with inert gas, to ensure the cooling performance.
6. Audio and visual alarm for high/low temperature, sensor error, power failure, door ajar, low battery.



PKL P-10



PKL P-20

Technical Parameters:

MODEL	PKL P-10	PKL P-20
Temp. Range	22±2°C	22±2°C
Temp. Accuracy	±0.1 °C	±0.1 °C
Oscillation	60±5cycles/minute	60±5cycles/minute
Amplitude	50±10mm	50±10mm
Trays	5	10
Blood Bags (450ml)	Max.10pcs	Max.20pcs.
Temp. Control	Microprocessor controller	Microprocessor controller
Display	LCD	LCD
Number of Agitator	Single	Single
Refrigerant	R134a, CFC free	R134a, CFC free
Power Supply	AC220±10%, 50/60Hz	AC220±10%, 50/60Hz
Consumption	197W	280W
Internal Size (W*D*H) mm	427*380*467	432*462*728
External Size (W*D*H) mm	522*600*1050	522*600*1300
Package Size (W*D*H) mm	640*740*1270	685*700*1450
Net /Gross Weight	66/87kg	85/109kg

Features:

1. Audio and visual alarm for high/low temperature, stalling speed.
2. Stainless steel inner chamber, round angle structure, easy cleaning.
3. UV lamp for disinfection, the interlock function for UV lamp and door.
4. Microprocessor control system, LCD display. RS485 interface for software connection.
5. High efficiency refrigeration system, fast cooling speed and uniformity temperature inside.
6. Double-layer glass observation window, filled with inert gas, to ensure the cooling performance.



Technical Parameters:

MODEL	PKL P-10 II	PKL P-20 II
Temp. Range	22±2°C	22±2°C
Temp. Accuracy	±1°C	±1°C
Oscillation	60±5cycles/minute	60±5cycles/minute
Amplitude	30mm	30mm
Trays	5	7
Blood Bags (450ml)	Max.10pcs	Max.14pcs
Temp. Control	Microprocessor controller	Microprocessor controller
Display	LCD	LCD
Number of Agitator	Single	Single
Refrigerant	R134a, CFC free	R134a, CFC free
Power Supply	AC220±10%, 50/60Hz	AC220±10%, 50/60Hz
Consumption	180W	250W
Internal Size (W*D*H) mm	400*370*550	450*420*850
External Size (W*D*H) mm	540*570*1070	590*620*1370
Package Size(W*D*H) mm	700*730*1280	750*780*1560
Net /Gross Weight	50/85Kg	90/120 Kg

Blood Bank Refrigerator

Advantage:

1. Multiple sensors design: make sure the precise monitoring and programming.
2. Double layer transparent glass door, easy to observe, also keep a better cooling temperature.
3. Forced air refrigeration system, ensure inner temperature constant and uniform.
4. Adjustable shelves, improve space utilization; blood storage baskets can be classified.
5. Individual transparent inner door, effectively reduce cool air loss when opening the door.



120L



160L



210L



250L



310L

Technical Parameters

MODEL	PKL-4V120	PKL-4V160	PKL-4V210	PKL-4V250	PKL-4V310
Capacity	120L	160L	210L	250L	310L
Temp. Range	4±1°C				
Temp. Accuracy	0.1°C				
Control System	Microprocessor control				
Display	LED display				
Alarm	Audio and visual alarm for: High or low temperature, Sensor & system failure; Door ajar; Power failure, Low battery alarm for BBR-4V120/160/210; Battery off alarm for BBR-4V250/310				
Refrigeration Type	Forced air refrigeration system				
Refrigerant	R134a, CFC-Free				
Compressor	International famous compressor				
Condenser & Evaporator	High efficiency air-cooled condenser, made of copper				
Defrost	Auto defrost				
Construction	Unibody Design, Mono-assembly foaming (Rigid polyurethane insulation material)				
Material	Internal Material	Stainless steel			
	External Material	Cold-rolled steel with anti-bacteria powder coating			
Door	Double layer transparent glass door with lock, Heating film preventing frosting, Sealing joint strip with magnetic force. Transparent plastic inner door				
Consumption	160W	280W	200W	380W	380W
Power Supply	AC110V/220V±10%, 50/60Hz	AC220V±10%, 50/60Hz	AC110V/220V±10%, 50/60Hz		
Casters	4 casters				
Adjustable Shelves	2pcs	4pcs	4pcs	4pcs	5pcs
Baskets	6pcs	12pcs	12pcs	12pcs	15pcs
Blood Bags (450ml)	66pcs	80pcs	132pcs	120pcs	150pcs
Standard Accessory	Temperature printer, LED lamp, probe access port, door key				
Optional Accessory	Temperature recorder			Temperature recorder, Remote alarm	
External Size(W*D*H) mm	522*635*1030	600*620*1600	522*635*1530	630*666*1658	630*666*1886
Package Size(W*D*H)mm	580*690*1200	700*660*1755	580*690*1700	780*755*1870	780*755*2100
Gross Weight	95kg	113kg	120kg	145kg	167kg

POCT

PKL PPC 90

Hemoglobin Meter

- Random Access, constant 640T/H, 1000 T/H with ISE
- High accuracy grating optical system
- Durable ceramic syringes, 4 unattached probes, 2 high-performance mixers
- 24 hours non-stop water cycle cooling system to keep the reagent at 2-8°C
- Metal solid heating for the 37°C incubation
- Support LIS interface
- Barcode optional



PKL PPC 30

Multimeter

- Parameters: TC, HDL, TG, LDL, TC/HDL
- Accurate and reliable result
- Suitable for various workplaces
- LCD Screen
- Bluetooth optional



PKL PPC 10

Multimeter

- Parameters: TC, HDL, TG, LDL, TC/HDL
- Accurate and reliable result
- Suitable for various workplaces
- LCD Screen
- Bluetooth optional





PKL PPC 80

Blood GlucoseMeter

- Strip back slide button
- Easy and fast, high-accuracy
- Glucose dehydrogenase method



PKL PPC 60

Blood GlucoseMeter

- Fast Blood Glucose test within 5 seconds
- High accuracy, only use 1ul whole blood
- Easy to use, automatic judgement for strips and code card



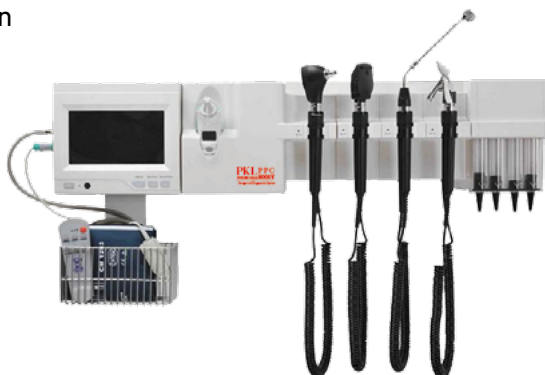
MEDICAL ELECTRONIC PRODUCTS

PKL PCC 9000

Integrated Diagnostic System (wall-mounted)

Blood Pressure, SpO₂, Temp, Pulse, Otoscope, Ophthalmoscope, Hammer, Nasal examination, Visual test, Color-blind test

- General clinic information technology solution
- Wide angle detection
- Detachable disinfection
- Combination design
- Support bluetooth



REAGENTS/CONSUMABLES



HUMAN RAPID TEST*

ACUAL MYOCARDIAL INFRACTION PREGNANCY
DRUGS OF ABUSE TESTS FOR GYNAECOLOGY
FECAL OCCULT BLOOD TEST OTHERS METABOLITES
INFECTIOUS DISEASE



IMMUNOLOGICAL AND SERODIAGNOSTIC TESTS*



RADIAL IMMUNODIFFUSION PLATES*



ANTIBIOGRAM DISCS*



MICROPIPETTE PKL



FIX VOLUME PIPETTE

FIX MICROPIPETTE 5 μ l
FIX MICROPIPETTE 10 μ l
FIX MICROPIPETTE 20 μ l
FIX MICROPIPETTE 25 μ l
FIX MICROPIPETTE 50 μ l
FIX MICROPIPETTE 200 μ l
FIX MICROPIPETTE 250 μ l
FIX MICROPIPETTE 500 μ l
FIX MICROPIPETTE 1000 μ l
FIX MICROPIPETTE 2000 μ l
FIX MICROPIPETTE 5000 μ l

VARIABLE VOLUME PIPETTE

VARIABLE MICROPIPETTE 0,5-10 μ l
VARIABLE MICROPIPETTE 2-20 μ l
VARIABLE MICROPIPETTE 5-50 μ l
VARIABLE MICROPIPETTE 10-100 μ l
VARIABLE MICROPIPETTE 20-200 μ l
VARIABLE MICROPIPETTE 50-200 μ l
VARIABLE MICROPIPETTE 100-1000 μ l
VARIABLE MICROPIPETTE 200-1000 μ l
VARIABLE MICROPIPETTE 500-5000 μ l
VARIABLE MICROPIPETTE 1000-5000 μ l

PIPETTE CONTROLLER PKL*



* Complete Catalogue on request

SUBSTRATES

ALBUMIN	Liquid Reagent	One Reagent	
BILIRUBIN DIRECT	Liquid Reagents	Two Reagents	
BILIRUBIN TOTAL DMSO	Liquid Reagents	Two Reagents	Standard included
CHOLESTEROL	Liquid Reagent	One Reagent	
CREATININE ENZYMATIC	Liquid Reagents	Two Reagents	Standard included
CREATININE JAFFE'	Liquid Reagents	Two Reagents	Standard included
GLUCOSE	Lyophilized		Standard included
HDL-CHOLESTEROL (DEXTRAN-SULPHATE)	Precipitant		
HDL-CHOLESTEROL (PEG)	Precipitant		
HDL-CHOLESTEROL DIRECT	Liquid Reagents	Two Reagents	
LDL-CHOLESTEROL [POLYVINYL SULPHATE METHOD]	Precipitant		
LDL-CHOLESTEROL DIRECT	Liquid Reagents	Two Reagents	Standard included
MUCOPROTEINS	Liquid Reagents	Two Reagents	
TOTAL PROTEINS	Liquid Reagent	One Reagent	
TRIGLYCERIDES	Liquid Reagent	One Reagent	Standard included
UREA COLOR	Lyophilized		Standard included
UREA UV	Liquid Reagent		Standard included
URINE PROTEINS (Pyrogallol red method)	Liquid Reagent	One Reagent	Standard included
URIC ACID	Liquid Reagent	One Reagent	Standard included

ENZYMES

ACID PHOSPHATASE (ACP)	Lyophilized		
ALKALINE PHOSPHATASE (ALP) - DEA	Liquid Reagents	Two Reagents	
ALKALINE PHOSPHATASE (ALP)	Lyophilized		
AMYLASE	Liquid Reagent	One Reagent	
CK-MB (WITH CONTROL)	Lyophilized		
CK-NAC	Liquid Reagents	Two Reagents	
CK-NAC	Lyophilized		
CHOLINESTERASE	Lyophilized		
CHOLINESTERASE	Liquid Reagents	Two Reagents	
GGT	Liquid Reagents	Two Reagents	
GGT	Lyophilized		
GOT/AST	Liquid Reagents	Two Reagents	
GOT/AST	Lyophilized		
GPT/ALT	Liquid Reagents	Two Reagents	
GPT/ALT	Lyophilized		
LDH	Liquid Reagents	Two Reagents	
LDH	Lyophilized		
LIPASE COLOR	Liquid Reagents	Two Reagents	Standard included

ELECTROLYTE

CALCIUM ARSENAZO III	Liquid Reagent	One Reagent	Standard included
CALCIUM ORTHO-CRESOPHTHALEIN	Liquid Reagents	Two Reagents	Standard included
CHLORIDE	Liquid Reagent	One Reagent	Standard included
COPPER LIQUID	Liquid Reagents	Two Reagents	Standard included
IRON - CAB (CHROMAZUROL B METHOD)	Liquid Reagent	One Reagent	Standard included
IRON FERRENE	Liquid Reagents	Two Reagents	Standard included
IRON FERROZINE	Liquid Reagents	Two Reagents	Standard included
MAGNESIUM (XYLYL BLUE METHOD)	Liquid Reagent	One Reagent	Standard included
MAGNESIUM (CALMAGITE METHOD)	Liquid Reagents	Two Reagents	Standard included
PHOSPHORUS INORGANIC U.V.	Liquid Reagent	One Reagent	Standard included
PHOSPHORUS INORGANIC VISIBLE	Liquid Reagent	One Reagent	Standard included
TIBC	Precipitant		
ZINC	Liquid Reagents	Two Reagents	Standard included

CONTROLS AND CALIBRATORS

ASSAYED MULTICOMPONENT HUMAN SERA - NORMAL	Multiparameter		
ASSAYED MULTICOMPONENT HUMAN SERA - ABNORMAL	Multiparameter		
CALIBRATOR	Multiparameter		
CK-MB CONTROL			
HDL/LDL CALIBRATOR			
HDL/LDL CONTROL			
MUCOPROTEIN STANDARD			
PROTEINS CALIBRATOR	Multiparameter		
PROTEINS POSITIVE CONTROL	Multiparameter		

OTHER KITS

ACETIC ACID UV	GLUCOSE/FRUCTOSE UV	METHAEMOGLOBIN
AMMONIA (CHROMATOGRAPHIC)	HB-A1C ENZYMATIC DIRECT	5-NUCLEOTIDASE
CARBOXYHEMOGLOBIN	HB-A1C CALIBRATOR SET	OXALATE (URINE)
CITRIC ACID UV (SEMINAL LIQUID)	HB-A1C CONTROL SET	POTASSIUM
CITRIC ACID UV (URINE)	HB-A2	SALICILATE
FRUCTOSAMINE	HEMOGLOBIN GLYCATED (RESIN METHOD)	SODIUM
FRUCTOSE UV (SEMINAL LIQUID)	LITHIUM	ZINC (SEMINAL LIQUID)

TURBIDIMETRY

α 1- ACID GLYCOPROTEIN	One Reagent	Turbidimetry
ANTITHROMBIN III	Two Reagents	Turbidimetry
ASO TURBIDIMETRIC LATEX WITH STANDARD	Two Reagents	Turbidimetry Latex
CRP TURBIDIMETRIC LATEX WITH STANDARD	Two Reagents	Turbidimetry Latex
CRP TURBIDIMETRIC	One Reagent	Turbidimetry
CRP LATEX ULTRA SENSITIVE	Two Reagents	Turbidimetry Latex
CERULOPLASMIN	One Reagent	Turbidimetry
COMPLEMENT COMPONENT C3	One Reagent	Turbidimetry
COMPLEMENT COMPONENT C4	One Reagent	Turbidimetry
FERRITIN	Two Reagents	Turbidimetry Latex
KAPPA LIGHT CHAIN (SERUM AND URINE)	Two Reagents	Turbidimetry
IMMUNOGLOBULIN A (IgA)	One Reagent	Turbidimetry
IMMUNOGLOBULIN G (IgG)	One Reagent	Turbidimetry
IMMUNOGLOBULIN M (Ig M)	One Reagent	Turbidimetry
LAMBDA LIGHT CHAIN (SERUM AND URINE)	Two Reagents	Turbidimetry
MICROALBUMIN	Two Reagents	Turbidimetry
RF TURBIDIMETRIC LATEX WITH STANDARD	Two Reagents	Turbidimetry Latex
TRANSFERRIN	One Reagent	Turbidimetry

TURBIDIMETRY DoA

AMPHETAMINE	COCAINE
BARBITURATE	COTININE
BENZODIAZEPINES	ECSTASY
BUPRENORPHINE	METHADONE
CANNABINOID	OPIATES

TURBIDIMETRY TDM

PARACETAMOL	VALPROIC ACID
SALICYLATE	CARBAMAZEPINE
PHENOBARBITAL	DIGOXIN
PHENYTOIN	THEOPHYLLINE
GENTAMICIN	

CALIBRATORS AND CONTROLS FOR TURBIDIMETRY DoA, TDM

SPECIAL KITS

α - FETOPROTEIN (AFP)	MYELOPEROXIDASE (MPO)
ADENOSINE DEAMINASE (ADA)	MYOGLOBIN
ALPHA - L - FUCOSIDASE (AFU)	N - ACETYL - B - D - GLUCOSAMINIDASE (NAG)
CARBON DIOXIDE (CO ₂)	PROCALCITONIN (PCT)
CARCINO EMBRYONIC ANTIGEN (CEA)	RETINOL BINDING PROTEIN (RBP)
CYSTATIN C	TOTAL BILE ACID
D - DIMER	TOTAL BILE ACIDS COLORIMETRIC
GLYCATED SERUM PROTEIN (GLICATED ALBUMIN)	TROPONIN I
HOMOCYSTEINE	

CLINICAL CHEMISTRY FOR OPEN SYSTEMS AND
FOR THE MOST IMPORTANT AUTOMATED ANALYZERS ON THE MARKET WITH DEDICATED BOTTLES
(ALSO WITH BARCODE):

PKL PPC, HITACHI*, OLYMPUS*, KONELAB*, MINDRAY*, RAYTO*, MIURA*, AMS* AND SO ON.

* The reported brand are of exclusive property of their respective manufacturers.

ELECTROPHORESIS REAGENTS

STRIPS TYPE HELENA* 60X76 mm

STRIPS FOR MANUAL USE IN CELLULOSE ACETATE several formats available

KIT FOR INTERLAB* 648

KIT FOR INTERLAB* 648 PC

KIT FOR INTERLAB* 648 ISO

KIT FOR INTERLAB* GENIO

KIT FOR SELEO*

KIT FOR EXPRIME*, ADALAYA*, GIANT*

KIT FOR PKL PPC ELFO

BUFFERS

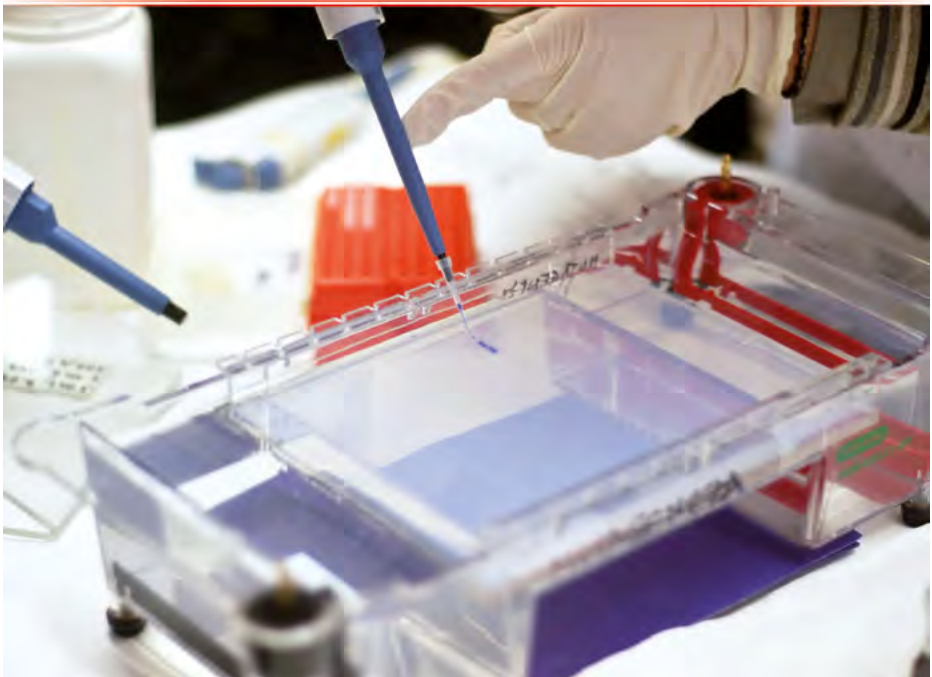
ROSSO PONCEAU

SUDAN BLACK

DECOLOURANT

* *The reported brand are of exclusive property of their respective manufacturers.*

* *Complete catalogue on request*



Hematology reagents

For Abbott*

For AVL*

For BPC*

For COULTER COUNTER*

For HYCEL*

For LABOVER*

For MEDONIC*

For ROCHE*/ABX*/HORIBA*

For SEAC*

For SWELAB*

For TOA SYSMEX*



Coagulation reagents

PT

APTT

FIBRINOGEN

PROTEIN C

PROTEIN S

D-DIMER

ANTITHROMBIN

* The reported brand are of exclusive property of their respective manufacturers
Complete catalogue on request.

Urine strips

Size available from 1 parameter to 14 parameters.
For Visual or Instruments



Urine slide

With 2 or 3 or 5 culture media



STAINS & ANCILLARY

BACTERIOLOGY STAINS*

GRAM (CLASSIC)

CRYSTAL VIOLET
IODINE SOLUTION
GRAM DECOLORIZER
SAFRANIN
FUCHSIN GRAM

GRAM PVP

GRAM PVP KIT
IODINE PVP
TB ZIEHEL-NEELEN KIT
CARBOL FUCHSIN
TB DECOLORIZER
KÜHNÉ'S METHYLENE BLUE

ZIEHL- NEELSEN TENSACTIVE KIT

CARBOL FUCHSIN TENSACTIVE

TB KINYOUN

TB KINYOUN KIT

TB AURAMINE (FLUORESCENT STAINING)

TB AURAMINE (MORSE) KIT
AURAMINE
MT DECOLORIZER
MT POTASSIUM PERMANGANATE

TB AURAMINE-RHODAMINE (FLUORESCENT STAINING)

TB AURAMINE- RHODAMINE KIT
AURAMINE- RHODAMINE

OTHER STAINS

CARBOL GENTIAN VIOLET
LOEFFLER'S METHYLENE BLUE

HAEMATOLOGY STAINS*

GIEMSA
MAY GRUNWALD

QUICK PANOPTIC (READY TO USE)

QUICK PANOPTIC
QUICK PANOPTIC CONCENTRATED 1:10
WRIGHT



STAINS FOR
HAEMATOLOGY*

HISTOPATHOLOGY STAINS*

CARAZZI'S HEMATOXYLIN
HARRIS' HEMATOXYLIN
MAYER'S HEMATOXYLIN
ORANGE G-6 SOLUTION
POLYCHROMIC SOLUTION EA-36
POLYCHROMIC SOLUTION EA-50

OTHER STAINS*

ACRIDIN ORANGE
BRILLIANT CRESYL BLUE
EOSIN 1%
ALCOHOLIC EOSIN 1%
EOSIN-NIGROSIN
LACTOPHENOL BLUE
MASSON'S TRICHROME STAIN
NEISSER'S STAINING KIT
SUDAN BLACK, KIT

WATER TESTS KIT: CHEMISTRY*

WATER: CHLORINE
WATER: CHLORINE/PH

ANCILLARY PRODUCTS*

ACETONE
DEIONIZED WATER
FORMALDEHYDE (FORMALIN) 3.7-4.0%
FORMALDEHYDE (FORMALIN) 30-35%
FORMALIN SUBSTITUTE
GLYCERINE
HAYEM
IMMERSION OIL
METHANOL
PARAFFIN PEARLS (M.P. 56°-58°C)
PBS
SERUM SEPARATOR
TURK
VASELINE OIL
WASHING SOLUTION
EXTRA WASH KIT
XYLENE
XYLENE SUBSTITUTE

LABWARE*

GLASS STAINING JARS

GLASS STAINING JAR FOR 5 SMEARS
GLASS STAINING JAR FOR 9 SMEARS
GLASS STAINING JAR FOR 10 SMEARS

STAINING JAR SETS: GLASS JAR WITH COVER

+ STEEL RACK FOR SLIDES

STAINING JAR SET NR. 1 (JAR + RACK)
STAINING JAR SET NR. 2 (JAR + RACK)

SPARE STAINING RACKS

STEEL RACK FOR 30 SLIDES
STEEL RACK FOR 60 SLIDES
GLASS STAINING JAR FOR 30 SLIDES (WITHOUT RACK)
GLASS STAINING JAR FOR 60 SLIDES (WITHOUT RACK)

*Complete Catalogue on request

EVACUATED TUBES

Plain Tube

- Plain Tube is used for determination in serology, drug monitoring and recommended blood banking
- Blood clotting time: 60 minutes.
- Centrifugation: 10~15 minutes with an rpm 3000~3800/min.
- Storage: room temperature (20~25°C).
- Packing: 100PCS/Tray.
- Single Use Only!! Dispose of the used tube according to your guideline.



Clot Activator Tube

- Clot Activator Tube is coated with Clot Activator on the interior of the tube wall to accelerate blood clotting.
- Clot Activator Tube is used for determination in chemistry , serology, immunology, electrolyte testing, etc.
- Invert Tube 3~5 times once blood specimen is collected. Blood clotting time: 15~30 minutes.
- SSGT tube should be centrifuged no later than 2 hours after collection.
- Centrifugation: 10~15 minutes with an rpm 3000~3800/min.
- Storage: room temperature (20~25°C).
- Packing: 100PCS/Tray.
- Single Use Only!! Dispose of the used tube according to your guideline.



SSGT (Serum Separating Gel Tube)

- SSGT Tube is coated with Clot Activator on the interior of the tube wall to accelerate blood clotting. A barrier polymer gel is presented at the tube bottom. The density of this material causes it to move upward during centrifugation to the serum-clot interface, where it forms a barrier separating serum from fibrin and cells.
- SSGT Tube is used for determination in chemistry , serology, immunology, electrolyte testing, etc.
- Invert Tube 3~5 times once blood specimen is collected. Blood clotting time: 15~30 minutes.
- SSGT tube should be centrifuged no later than 2 hours after collection.
- Centrifugation: 10~15 minutes with an rpm 3000~3800/min.
- Storage: room temperature (20~25°C).
- Packing: 100PCS/Tray.
- Single Use Only!! Dispose of the used tube according to your guideline.



Lithium Heparin

- Lithium Heparin Tube is coated with Lithium Heparin on the interior of the tube wall to inhibit blood clotting.
- The anticoagulant heparin activates anti-thrombins, thus blocking the coagulation cascade and producing whole blood/plasma specimen instead of clotted blood plus serum.
- Plasma obtained in Lithium Heparin Tube should be removed from the tube within 2 hours after blood collection.
- Invert Tube 5~8 times once blood specimen is collected.
- Storage: room temperature (20~25°C).
- Packing: 100PCS/Tray.
- Single Use Only!! Dispose of the used tube according to your guideline.



Sodium Heparin

- Sodium Heparin Tube is coated with Sodium Heparin on the interior of the tube wall to inhibit blood clotting.
- The anticoagulant heparin activates anti-thrombins, thus blocking the coagulation cascade and producing whole blood/plasma specimen instead of clotted blood plus serum.
- Plasma obtained in Sodium Heparin Tube should be removed from the tube within 2 hours after blood collection.
- Invert Tube 5~8 times once blood specimen is collected.
- Storage: room temperature (20~25°C).
- Packing: 100PCS/Tray.
- Single Use Only!! Dispose of the used tube according to your guideline.



Coagulation tube

- Coagulation Tube is filled with buffered tri-sodium citrate solution.
- The mixing ratio is 1 part citrate solution to 9 parts blood.
- Citrate concentration of either 0.109mol/L (3.2%) or 0.129mol/L (3.8%) is available. The choice of the concentration depends upon the ICSH recommended
- Coagulation Tube is mainly used for examination of coagulation parameters and can provide an excellent condition for the test of PT, APTT, FIB, TT, etc.
- Invert Tube 5-8 times once blood specimen is collected.
- Storage: room temperature (20-25°C).
- Packing: 100PCS/Tray.
- Single Use Only!! Dispose of the used tube according to your guideline.



K2EDTA

- K2EDTA Tube is coated with K2EDTA on the interior of the tube wall.
- The K2EDTA binds calcium ions, thus blocking the coagulation cascades. Erythrocytes, Leukocytes, Thrombocytes are stable in K2EDTA anti-coagulated blood for up to 24 hours.
- K2EDTA Tube can be used for direct sampling and analyzers without actually being opened.
- Invert Tube 5-8 times once blood specimen is collected.
- Storage: room temperature (20-25°C).
- Packing: 100PCS/Tray.
- Single Use Only!! Dispose of the used tube according to your guideline.



K3EDTA

- K3EDTA Tube is coated with K3EDTA on the interior of the tube wall.
- The K3EDTA binds calcium ions, thus blocking the coagulation cascades. Erythrocytes, Leukocytes, Thrombocytes are stable in K3EDTA anti-coagulated blood for up to 24 hours.
- K3EDTA Tube can be used for direct sampling and analyzers without actually being opened.
- Invert Tube 5-8 times once blood specimen is collected.
- Storage: room temperature (20-25°C).
- Packing: 100PCS/Tray.
- Single Use Only!! Dispose of the used tube according to your guideline.



ESR

- ESR Tube contains a 3.8% (0.129mol/L) buffered sodium citrate solution. The mixing ratio is 1 part Citrate solution to 9 parts blood.
- ESR tubes are used for the collection and transport of venous blood for blood sedimentation rate testing.
- ESR measurement refers to the Westergren method.
- Invert Tube 5-8 times once blood specimen is collected.
- Storage: room temperature (20-25°C).
- Packing: 100PCS/Tray.
- Single Use Only!! Dispose of the used tube according to your guideline.



Glucose

- Glucose Tube contains dispensed Sodium Fluoride/Sodium EDTA or Sodium Fluoride/Potassium Oxalate at the tube bottom.
- Glucose Tube as glycolysis inhibitors is to preserve glucose when combined with an anticoagulant such as Sodium EDTA or Potassium Oxalate. Sodium Fluoride is effective in preserving glucose for up to 48 hours.
- Glucose Tube is used for determination of Blood Sugar and Lactic Acid.
- Invert Tube 5-8 times once blood specimen is collected.
- Storage: room temperature (20-25°C).
- Packing: 100PCS/Tray.
- Single Use Only!! Dispose of the used tube according to your guideline.



LAB BENCHES

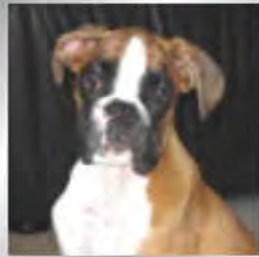
Our lab benches, in all their performance, can be equipped with a choice of materials plans individual work for a variety of employment opportunities in every area of the laboratory.

WHAT YOU WANT, WE CAN SUPPLY.



PKL VETERINARY LINE

**Clinical Chemistry
and Immunology**



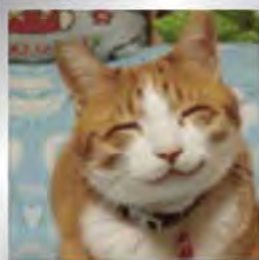
**Molecular
Biology
and Quality
Controls**



**Hematology
Coagulation**



**Rapid Tests
Bacteriology**



**Plastic
Monouse**



**Small
equipment**



**Software and specific
values for animals**

**Complete Catalogue on request*



VETERINARY INSTRUMENTS

PKL PPC 1200H VET **5-Diff Hematology Analyzer**

- 34 parameters including RET%, RET#, IRF
- Laser light multi-dimensional cell classification
- Double mode for WBC counting (Impedance Count and Optical Count)
- Resistant RBC mode
- Up to 60T/H
- Internal barcode reader



PKL PCC 1040H VET **5-Diff Hematology Analyzer**

- 34 parameters including RET%, RET#, IRF
- 60T7H
- Laser light multi-dimensional cell classification
- Resistant RBC mode
- Support both whole blood and capillary blood samples
- Only three reagents for 25 parameters



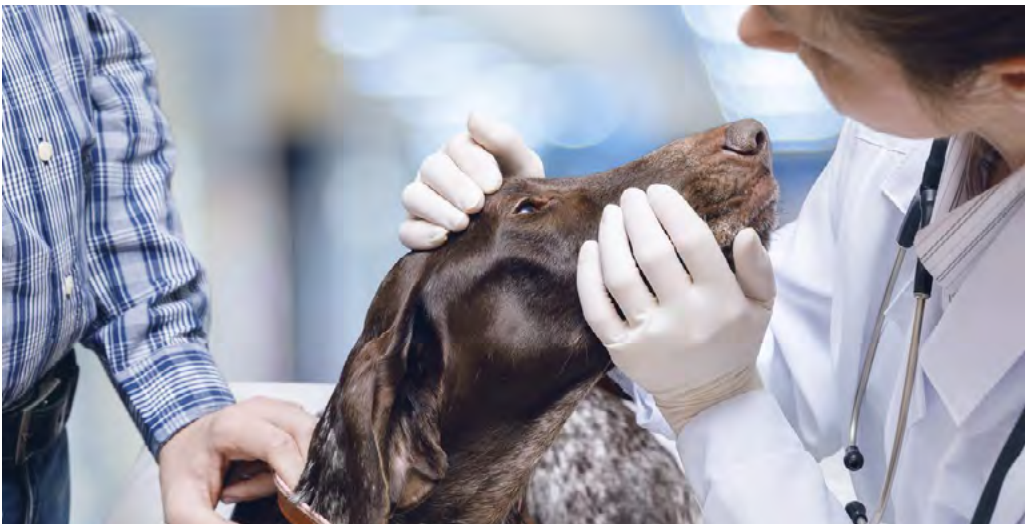
PKL PCC 1150H VET **5-Diff Hematology Analyzer**

- 34 parameters including RET%, RET#, IRF
- 60T7H
- Laser light multi-dimensional cell classification
- Resistant RBC mode
- Support both whole blood and capillary blood samples
- Only three reagents for 25 parameters



PKL PCC 610H VET **3-Diff Hematology Analyzers**

- 16 pre-determined mode settings
- 60T/H, 21 parameters and 3 histograms
- 10.4 inch color LCD display & Linux operation system
- Support USB data backup & system upgrade
- Support LIS and HIS with HL7 protocol
- Touch screen optional



ELPHO VET

Automatic Electrophoresis System on Acetate Cellulose

- Analysis type: serumprotein, hemoglobin
- 1 to 16 samples micro
- 16 samples version: in 60 min;
the first 8 samples in 40 min
- 8 independent channels
- Chambers can be both extractable
in order to be filled.
- Emptied and washed; or fixed with
a total fluidic automation
- Computer inside, USB, LAN.
Remote connection.



ELPHO AGAROSE VET

Automatic Electrophoresis System on Agarose Gel

- Serumproteins, Hemoglobins, Urine Proteins
- 1 to 26 samples: 2 lines of 13 samples
(total 26 samples holes);26 samples in 45 min
- 13 ultrabright led
- Load, recover and discharge all reagent
with fluidic full Automatic
- Temperature Migration controller with Peltier
and transistor for essication of gel
- In the internal small basins with time
infrared probes;
- in the external tanks with immersion probes.
- Windows 10 or Windows 7
- PC & Keyboard ; mouse. (external PC)
- Dedicated Software with methodic changeable management



PKL PPC 100 VET **Urine Analyzer**

- Up to 120T/H and 14 parameters available
- FDA approved
- Portable
- Barcode reader optional
- Urin-10K, Urin-11K and Urin-14K control available



PKL PPC 110 VET **Chemistry Analyzers**

- Easy visual reading
- Much higher reliability with Ascorbic Acid parameter



PKL PCC 115 VET **Chemistry Analyzer**

- Friendly operation with 7 inch colourful touch screen
- Sophisticated Software, large memory capacity
- High-quality filters & close optical system
- Convenient maintenance design



PKL PPC 122 VET

Automatic Chemistry Analyzer – Dry Reagents

- Sample Type: whole blood, Plasma, Serum
- Sample Consumption: 100ul,
Just three drops of whole blood
- Parameters: up to 16 parameters in one test,
10 mins getting result. 25 parameters configured in 8 profiles
- Dual wavelength , high resolution.
- Time to result – 10 min.
- Consumptive material : reagent disc, diluent,
pipette tips.
- Reagent disc: 11 biochemistry dry profile
& Electrolyte profile (8 items)
- Portable design: Total 2.2 KG
- Calibration: Calibration information
by scanning the QR code



PKL PPC 125 VET **Automatic Chemistry Analyzer**

- Carry-on baggage size
- End point $CV \leq 0.5\%$; Kinetic $CV \leq 1\%$; two points $CV \leq 1.5\%$
- Lower failure rate; easy maintenance
- 9 Wavelengths
- Barcode reader (optional)
- Water cycle cooling
- Auto warm water washing
- Immunology items
- Powerful software
- Support lis interface
- 200 tests/hour



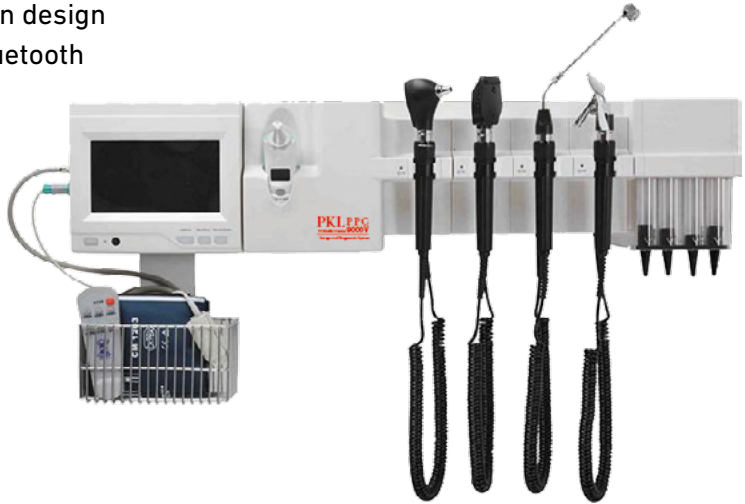
PKL PPC 200 VET **Automatic Chemistry Analyzer**

- Random Access, constant 200 tests/hour
- 24 hour non-stop cooling system to ensure reagent at 2-8°C
- Durable ceramic syringes to ensure accuracy & precision
- High accurate optical system
- Collision protection in both vertical and horizontal directions, stop & alarm automatically once touching barrier, not affect former tests
- Automatic eligible cuvettes detection & selection
- Select best test point by reaction curve, create new factor automatically
- Support LIS interface



PKL PCC 9000 VET *Integrated Diagnostic System*

- General clinic information technology solution
- Wide angle detection
- Detachable disinfection
- Combination design
- Support bluetooth



PARAMEDICAL®

AFFORDABLE DIAGNOSTIC
SOLUTIONS FROM 1996



www.paramedical.it



BUSINESS PRESENTATION

Paramedical Srl is an italian company founded in 1996.

Paramedical produces and distributes in vitro diagnostic devices and scientific equipments. It is the exclusive owner of PKL brand for IVD and PPC brand for scientific instruments (Full and Semi-Automated Systems for Clinical Chemistry, Immunoassay, Urine, Coagulation, Centrifuges and others).

The company is ISO 9001:2015, ISO 13485:2016 certified.

Paramedical is compliant with the European Directive (98/79/CE).

The company offers the possibility to buy clinical chemistry reagents in bulk and/or in OEM according to specific customer needs.

What you want, we can supply!

The production of clinical chemistry can be supplied in dedicated bottles specific for the most analyzers available on the market. Paramedical also has a division for educational products (school, university and so on) and for the production of laboratory furniture as lab benches.





MADE IN ITALY

OTHER PRODUCTS:

BACTERIOLOGY	CHEMICAL REAGENTS
CLINICAL CHEMISTRY REAGENTS	FOR LABORATORY USE
CONTROLS	CONDUCTIMETER
COAGULATION	LABORATORY GLASSWARE
ELECTROPHORESIS	MICROPIPETTES
HEMATOLOGY COLORANTS	PCR CABINETS
IMMUNOFLUORESCENCE	PH METERS
IMMUNOENZYMATIC	PLASTIC DISPENSABLES
PHOTOMETRIC FOOD ANALYSIS	PLATES WITH
PLASTIC VACUUM TUBES	ELECTROMAGNETIC
RADIAL IMMUNODIFFUSION	STIRRING
RAPID TESTS ON CARDS FOR	REFRACTOMETERS
HUMAN AND VETERINARY USE	SPECTROPHOTOMETERS
SEROLOGY	STIRRERS
WATER ANALYSIS	THERMOSTATS
ANALYTICAL AND TECHNICAL BALANCES	AND OTHERS

Distributor:

Paramedical srl Via Antonio Amato, 24/26 - 84131 Salerno ITALY

Vat.: IT03117920656 **tel.** +39 089.385027 - **fax.** +39 089.3854479 / **admin@paramedical.it**

Dubai office: Paramedical srl Level 2, Regus DWTC District / Regus DWTC FreeZoneCentral 1 Building,
Dubai World Trade Center, Dubai, UAE

Phone +9714-523-2641 **e-mail** dubai@paramedical.it

www.paramedical.it