



BROCHURE PKL-PPC 2018/2019

AFFORDABLE DIAGNOSTIC SOLUTIONS FROM 1996



PKL®
POKLER ITALIA

BUSINESS PRESENTATION

Paramedical Srl is an Italian company founded in 1996.

Paramedical produces and distributes in vitro diagnostic devices and scientific equipments.

It is the exclusive owner of PKL brand for IVD and PPC brand for scientific instruments (Full and Semi-Automated Systems for Clinical Chemistry, Immunoassay, Urine, Coagulation, Centrifuges and others).

The company is **ISO 9001:2015, ISO 13485:2016** certified.

Paramedical is compliant with the European Directive (98/79/CE).

The company offers the possibility to buy clinical chemistry reagents in bulk and/or in OEM according to specific customer needs. What you want we can supply.

The production of clinical chemistry can be supplied in dedicated bottles specific for the most analyzers available on the market. Paramedical also has a division for educational products (school, university and so on) and for the production of laboratory furniture as lab benches.



PARAMEDICAL srl
Via Antonio Amato 24/26
84131 Salerno - ITALY
Vat.: IT03117920656

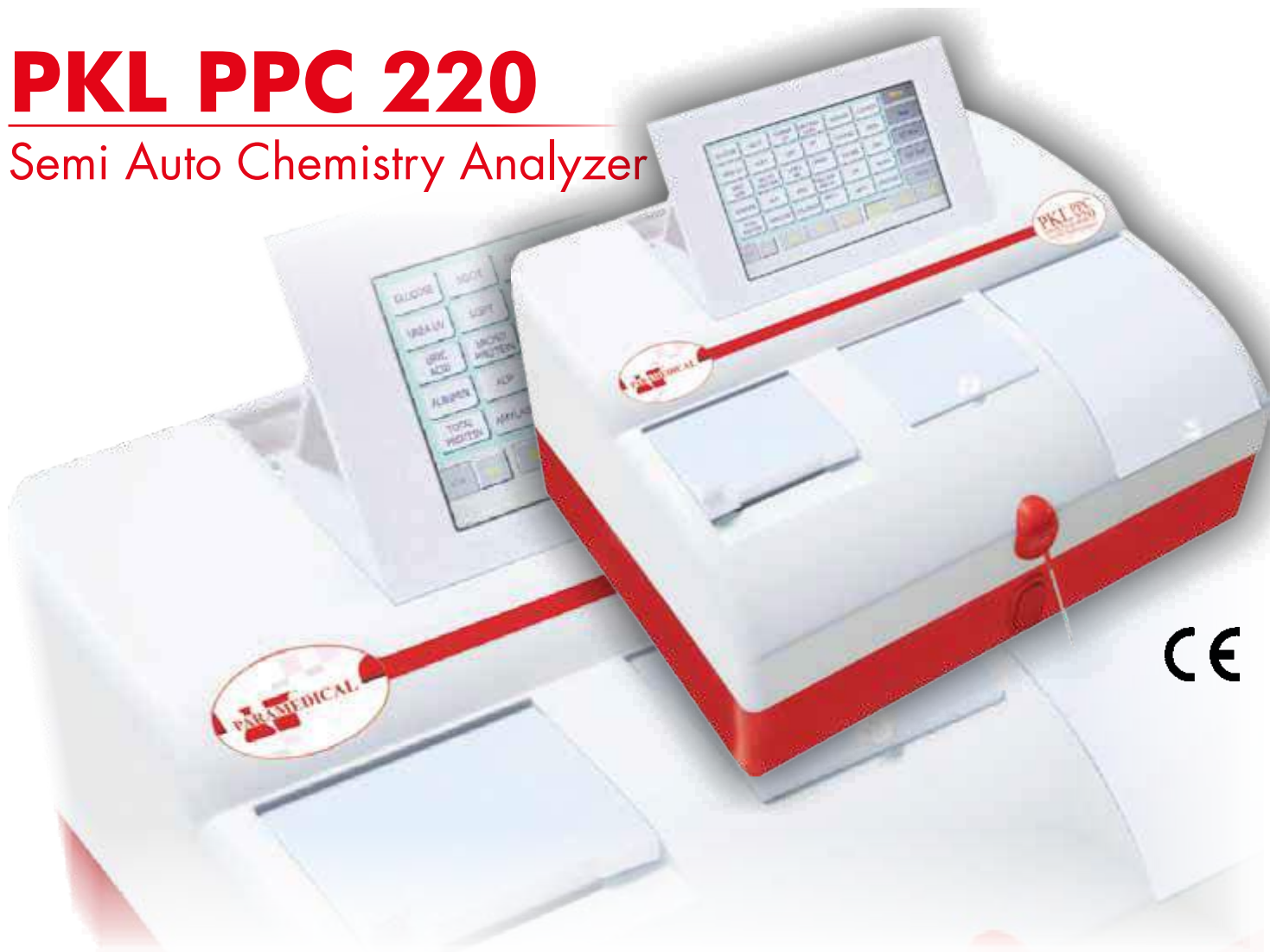
Tel. +39 089.385027 - **Fax** +39 089.3854479
amministrazione@paramedical.it

Product Range

CHEMISTRY ANALYZERS AND REAGENTS	3
ELECTROLYTE ANALYZERS	18
POC TESTING AND REAGENTS	20
HEMATOLOGY ANALYZERS AND REAGENTS	22
URINE ANALYZERS AND REAGENTS	27
COAGULATION ANALYZERS AND REAGENTS	33
MICROPLATE READERS AND REAGENTS	36
MICROPLATE WASHERS AND REAGENTS	37
IMMUNOASSAY ANALYZER	39
PROTEIN ANALYZER	41
CENTRIFUGES AND IMMUNOASSAY ANALYZER	44
MICROSCOPES	50
CABINETS	54
INCUBATORS	56
ELECTROPHORESIS SYSTEMS	57
REAGENTS / CONSUMABLES	58
EVACUATED TUBES	61
VETERINARY PRODUCTS	63

PKL PPC 220

Semi Auto Chemistry Analyzer



Features:

- Direct Access To Test By TFT LCD Colour Display
- Sophisticated Windows Based Software
- Real Time Graph With Per Second Reading
- Auto Recalculation Of Non Linear Kinetic Tests
- Sample, QC Sample, Balnk and standard Run count Facility
- Patient Data Management
- Multi Standard Runs in All Modes
- Levery Jennings and Standard Deviation Graphs
- 384 Head 20 Column Stationary Head Thermal Printer, With Paper Sensor
- Built in Stabilizer-Voltage Range 90-270 volts
- Specially Designed Long Life Presistaltic Pump, Minimum Carryover
- Built in Incubator
- Dual Reading Modes-Flow Cell & Cuvette

PKL PPC 220

Semi Auto Chemistry Analyzer

TECHNICAL SPECIFICATIONS:

Human Machine Interface: LCD touch screen

Linear Measurement Range: 0.000 to 3.000 Absorbance Units (A)

Photometric Accuracy: $\pm 2\%$ or 0.007 whichever is higher,
from 0 to 1.5 A, $\pm 3\%$ from
1.5 A to 3.0 A

Optical measurement: Photodiode

Filters

Type of filter: High Quality Narrow band
Interference

Wave Length: 340, 405, 510, 546, 578,
630 nm & Two Optional

Flow cell

Sipping Volume: up to 1000 μ l

Flow cell Volume: 18 μ l

Cuvette Volume: 500 μ l

Analysis Mode: Absorbance, End Point, Fixed Time, Kinetic, Differential, Ratio
& Multi-Point standard

Concentration Calculation: By factor or by standard

Display: 7" TFT LCD colour

Printer: On board thermal 20 column, maintenance free

Interface: USB

Power

Wattage: 50 watts

Voltage: 115 - 230 Volts $\pm 10\%$, 50 - 60 Hz

Operating Position: On orizontal, flat, rigid and vibration free surface

Storage Conditions

Temperature: From -10°C to $+60^{\circ}\text{C}$

Relative Humidity: Up to 85%

Enclosure: ABS Fire retardant

Size (cm): 30x30x18 (l x b x h)

Weight: 5 Kgs. (Approx)



Colour Display



Incubator



Online Graph



L. J. Graph

PKL PPC 210

Semi Auto Chemistry Analyzer



CE

Complete Lab:

Built in Incubator
Built in Stabilizer (90 to 270 Volts)
Performs All Biochemistry Tests
Results in thermal printout
Built in processor to calculate results
Direct Data transfer to computer

Efficient Power House:

Low Reagent volume, 500 μ l
Low power consumption
Memory to save Standard and Blank
High Linearity of 3.000 Absorbance
Automatic calculation of results
SGOT/SGPT results in minutes
Programmable modes such as Absorbance,
End Point, Fixed Time & Kinetic
Automatic Filter Selection

Glucose
Urea
Creatinine
Hemoglobin
Cholesterol
SGPT
SGOT
Albumin
Total Protein
Total Bilirubin
Direct Bilirubin
Alkaline Phosphatase
Uric Acid
Triglycerides
Urea UV
Amylase
Gamma GT
Phosphorus
Micro Protein
Calcium Ars. III
Calcium OCPC
HDL Cholesterol
Chloride
and others

SPECIFICATIONS:

- Measuring System: Photometric
- Range: 0.000 to 3.000 Absorbance Units (A)
- Type of Filter: Interference Filter 340, 405, 510, 546, 578 & 630 nm
- Test Tube Volume: 500 μ l
- Display: Four Line LCD, back lit, 16 Characters
- Concentration Calculation: By factor or by standard
- Incubator: Built in 37°C, 15 test tubes

PKL PPC 110

Semi Auto Chemistry Analyzer



CE

SPECIFICATIONS:

- Analysis method: Kinetic, end point, non-linear, sample blank, reagent blank, etc
- Light source: halogen lamp, 6V/10W
- Wavelength range: 300~800nm
- Absorbance range: -0.3~3.0Abs
- Wavelength accuracy: ± 1 nm
- Spectrum band: ± 6 nm
- Flowcell: 10mm quartz cell, 32 μ l volume
- Temperature control: Room temperature, 25°C, 30°C, 37°C, (± 0.1 °C variable)
- Sampling volume: 100 μ l~9999 μ l tunable
- Cross contamination: $\leq 1.0\%$
- Stability: ≤ 0.005 Abs/h
- Memory: up to 234 items and 20000 test results
- Display: Large LCD display
- Printer: Built-in thermal printer
- Output: RS232 connecting to PC
- Ambient: Room temperature: 10°C~32°C; Humidity: $\approx 85\%$
- Power: AC 220V ($\pm 10\%$) V, 50Hz
- Dimension: 392 x 375 x 205mm (length * width * height)

PKL PPC 115

Chemistry Analyzer

High performance
Easy touch screen operation
Convenient maintenance design
Support barcode reader
With 8 inner incubation positions



SPECIFICATIONS

Analysis method: Kinetic, end point, two point, dual wavelength, ABS

Light source: halogen lamp, 6V/10W

Wavelength (in nm): 340, 405, 492, 510, 546, 578, 630, 700

Absorbance range: -0.3~4.0Abs

Wavelength accuracy: $\pm 2\text{nm}$

Spectrum band: $\pm 10\text{nm}$

Flowcell: 10mm quartz cell, 32 μL volume

Temperature control: room temperature, 37°C ($\pm 0.1^\circ\text{C}$ variable)

Sampling volume: 100 μL ~ 9999 μL adjustable, recommended: 500 μL

Cross contamination: $\leq 1.0\%$

Stability: $\leq 0.005\text{Abs/h}$

Memory: Up to 300 items and 30000 test results

Display: Large LCD touch screen display

Printer: Built-in thermal printer

Interface: Parallel port (For external printer), RJ-45, 3USB, SDID, PS-2

Ambient: Room temperature: 10 °C ~ 32 °C; Humidity: $\leq 40\%$ ~ 85%

Power: AC (110-220)V, 50Hz

Dimension: 362.5 x 341 x 165mm (length * width * height)



7 inch touch screen



8 inner incubation



Multi function ports

FEATURES

- High-quality grating & close optical system
- Easy touch screen operation with 7 inch colour screen
- Convenient maintenance design
- Large memory capacity
- With 8 inner incubation positions
- Support barcode reader

PKL PPC 215

Small Automated Chemistry Analyzer

The smallest automatic Chemistry Analyzer in the world

120 tests per hour-Time Efficiency
Automated testing & Low maintenance-Operation Efficiency
150ul reagent consumption-Cost Efficiency



Sampling probe

- External & internal mirror polish, external & internal probe washing
- Dedicated sampling probe equipped with sensitive liquid sensor.
- Collision portion

Reaction tray

40 reaction cuvettes
Reaction volume as low as 150ul
Stable & accurate temperature ($37 \pm 0.1^\circ\text{C}$) for reaction



High precision ceramic syringe

Sample dispensing by frequency converting design
Accurate dispensing as low as 0.1 ul

Multi-functional sample & reagent tray

32 reagent positions (16 for R1, 16 for R2)
31 sample positions, micro cup & primary tube available



Washing station

4 needles wash-station
Twofold washing
Effective washing to ensure accurate result and valid diagnostics



TECHNICAL SPECIFICATIONS

GENERAL INFORMATION

Machine type:	Random access, open reagent
Test speed:	Constant 120T/H (mono/double reagent)
Test principle:	Colorimetric method, turbidimetry
Test method:	End point, fixed-time, Kinetics
Calibration type:	Liner & nonlinear IIS: available
Water consumption:	1 L/H

SAMPLE & REAGENT UNIT

Sample tray:	31 sample positions
Sample cup type:	Micro cup & primary tube
Reagent tray:	32 reagent positions (16 for R1, 16 for R2)
Sample volume:	2~30, step by 0.1 μL
Reagent volume:	20~300 μL , step by 1 μL

OPTICAL SYSTEM

Light source:	cold light (LED)
Wavelength (nm):	340, 405, 450, 510, 546, 630 2 more options)
Absorbance range:	0-4.0A
Resolution:	0.0001A

OPERATION SYSTEM REQUIREMENTS

OS:	Win XP, Win 7, Win 8
Communication:	USB

WORKING CONDITIONS

Power supply:	100-240VAC, 50/60Hz, 102W
Dimension:	468 mm x 270 mm x 290 mm

PKL PPC 125

Automated Chemistry Analyzer



SPECIFICATIONS:

Assay methods:	End point, 2 end point, kinetic, Fix time etc.
Principle:	Photoelectric colorimetry
Light Source:	Halogen-Tungsten lamp with long life
Photometry range:	0~4.0 Abs
Wavelength:	9 long life wavelengths in 300nm to 700nm range with ± 2 nm precision
Throughput:	200 tests/hour
Probes:	2 probes. Reagent dispense and Sample mixing
Reagent tray:	40 reagents positions, 10~400 μ l, with 1 μ l increment
Sample tray:	4 sample positions, including standard, QC, STAT positions, 2~50 μ l, with 0.1 μ l increment
Reaction tray:	60 reusable reaction cuvettes
Refrigeration:	On board cooling for Reagents, Samples, Calibrators, Standards, Controls with ON/OFF Switch
Minimum reaction volume:	150 μ l
Clean unit:	8-step auto-washing system
Water Consumption:	Less than 2L/hour under working status
Quality Control:	Quality Control program with Levy Jennings, Multiple lots, QC charts, etc.
Temperature control:	Incubator $37 \pm 0.1^{\circ}\text{C}$
Power supply:	AC 220V, 50Hz
Dimension:	560 mm x 410 mm x 360 mm
Weight:	30 Kgs

FEATURES:

- High accurate optical system
- 24 hours non-stop cooling system to ensure reagent at 2-8 $^{\circ}\text{C}$
- Collision protection in both vertical and horizontal directions, stop & alarm automatically
- Automatic eligible cuvettes detection & selection
- Select best test point by reaction curve, create new factor automatically
- Support LIS interface

PKL PPC 200

Automated Chemistry Analyzer

Assay methods:	End Point, Kinetic, Fix time etc.
Principle:	Photoelectric colorimetry
Light Source:	Halogen lamp 12V/20W
Photometry range:	0~3.2Abs
Resolution:	0.0001Abs
Wavelength:	340nm\405nm\450nm\492nm\510nm\546nm \578nm\630nm\700nm\800nm
Throughput:	200 tests/hour
Reagent tray:	60 reagent positions (include 1 detergent position, 1 dilution position)
Sample tray:	45 sample positions, including detergent, standard, QC, STAT positions
Reaction tray:	120 reaction cuvettes
Sample volume:	2~100µl, with 0.1µl increment
Reagent volume:	R1: 10~500µl, R2: 10~500µl, with 0.5µl increment
Minimum reaction volume:	80µl
Maximum reaction time:	10 minutes
Water Consumption:	5L/hour under working status
Clean unit:	8-step auto-washing system with detergent
Calibration:	Calibration reset, select best test point by reaction curve, no need second calibration Line/non-line; multi-standards assay
Control rules:	Westgard multi-rule, Cumulative sum check, Twin plot 3 level controls for each item, analyzing and printing QC analysis diagram
Temperature control:	Incubator 37 ± 0.1°C
Power supply:	AC 230(1±10%)V, 50/60Hz, 500VA
Ambient:	Operating temperature: 10~30°C Relative humidity: 85% Atmospheric pressure: 86~106kPa
Features:	24 hour non-stop cooling system to ensure reagent at 2-8°C Durable ceramic syringes to ensure accuracy & precision High accurate optical system Collision protection in both vertical and horizontal directions, stop & alarm automatically once touching barrier, not affect former tests Automatic eligible cuvettes detection & selection Select best test point by reaction curve, create new factor automatically Support LIS interface.



Bench top analyzer.
Options: Floor support.



PKL PPC 300

Automated Chemistry Analyzer

Assay methods:	End point, 2 end point, kinetic, fix time, bichromatic
Principle:	Photoelectric colorimetry
Light Source:	Halogen lamp 12V/20W
Photometry range:	0~3Abs
Resolution:	0.0001Abs
Wavelength:	10 wavelengths (340nm~800nm)
Throughput:	300tests/hour
Reagent tray:	60 reagents positions
Sample tray:	45 samples positions (including standard, QC)
Reaction tray:	120 reaction cuvettes
Sample volume:	2~100µl, with 0.1 µl increment
Reagent volume:	R1:10~500µl, R2: 10~500µl, with 0,5 µl increment
Minimum reaction volume:	150 µl
Maximum reaction time:	10 minutes
Water Consumption:	6L/hour under working status
Clean unit:	8-step auto-washing system with detergent and 37° C water
Waste:	Biological waste separated from washing solution
Calibration:	Calibration reset, select best test point by reaction curve, no need second calibration Line; multi-standards assay
Control rules:	Westgard multi-rule, Cumulative sum check, Twin plot 3 level controls for each item, analyzing and printing QC analysis diagram
Temperature control:	Incubator 37 ± 0.1°C



PKL PPC 400

Automated Chemistry Analyzer



CE

Assay methods:	End point, 2 end point, kinetic, fix time, bichromatic
Principle:	Photoelectric colorimetry
Light Source:	Halogen lamp 12V/20W
Photometry range:	0~3Abs
Resolution:	0.0001Abs
Wavelength:	10 wavelengths (340nm~800nm)
Throughput:	400tests/hour
Reagent tray:	60 reagents positions
Sample tray:	75 samples positions (including standard, QC)
Reaction tray:	120 reaction cuvettes
Sample volume:	2~100µl, with 0.1 µl increment
Reagent volume:	R1:10~500µl, R2: 10~500µl, with 0,5 µl increment
Minimum reaction volume:	150 µl
Maximum reaction time:	10 minutes
Water Consumption:	6L/hour under working status
Clean unit:	8-step auto-washing system with detergent and 37° C water
Waste:	Biological waste separated from washing solution
Calibration:	Calibration reset, select best test point by reaction curve, no need second calibration Line; multi-standards assay
Control rules:	Westgard multi-rule, Cumulative sum check, Twin plot 3 level controls for each item, analyzing and printing QC analysis diagram
Temperature control:	Incubator 37 ± 0.1°C

PKL PPC 700

Automated Chemistry Analyzer

SPECIFICATIONS:

Assay methods:	End Point, Kinetic, Fix time etc.
Principle:	Photoelectric Colorimetry
Light Source:	Halogen lamp 12V/20W
Photometry range:	0~3.2Abs
Resolution:	0.0001Abs
Wavelength:	12 wavelengths (340nm 405nm 450nm 480nm 505nm 546nm 570nm 605nm 660nm 700nm 750nm 800nm) using grating
Throughput:	Constant 640 tests/hour, 1000 tests/hour with ISE
Reagent tray:	160 reagent positions
Sample tray:	99sample positions, including detergent position, standard positions, QC positions, STAT positions
Reaction tray:	120 reaction positions
Sample volume:	2~100 μ l, with 0.1 μ l increment
Reagent volume:	5~1000 μ l, with 0.5 μ l increment
Minimum reaction volume:	150 μ l
Maximum reaction time:	10 minutes
Water Consumption:	less than 25L/hour under working status
Clean unit:	8-steps auto-washing system
Calibration:	Calibration reset, select best test point by reaction curve, no need second calibration
Control rules:	Westgard multi-rule, Cumulative sum check, Twin plot
Waste:	Biological waste separated from washing solution
Temperature control:	incubator 37 \pm 0.1
Power supply:	AC 220(1 \pm 10%)V,50Hz
Ambient:	Operating temperature: 10~35 Relative humidity: \leq 85% Atmospheric pressure: 86~106kPa

FEATURES:

- 8-steps auto-washing system with detergent and 37 °C water
- 24 hour non-stop water cycle cooling system to ensure reagent at 2-8 °C
- Three-unattached durable ceramic syring
- Collision protection in both vertical and horizontal directions
- Stop & alarm automatically once touching barrier, not affect former tests
- Automatic eligible cuvettes detection & selection
- Select best test point by reaction curve, create new factor automatically



CLINICAL CHEMISTRY

CE

Clinical Chemistry
for Open System
and with
dedicated bottles
for the most
important
Automated Analyzers

PARAMEDICAL

PKL
POMERITATA

SUBSTRATES

ALBUMIN	Liquid Reagent	One Reagent	
BILIRUBIN DIRECT	Liquid Reagents	Two Reagents	
BILIRUBIN TOTAL DMSO	Liquid Reagents	Two Reagents	
CHOLESTEROL	Liquid Reagent	One Reagent	Standard included
CREATININE ENZYMATIC	Liquid Reagents	Two Reagents	
CREATININE JAFFE'	Liquid Reagents	Two Reagents	Standard included
GLUCOSE	Lyophilized		Standard included
HDL-CHOLESTEROL (DEXTRAN-SULPHATE)	Precipitant		
HDL-CHOLESTEROL (PEG)	Precipitant		
HDL-CHOLESTEROL DIRECT	Liquid Reagents	Two Reagents	
LDL-CHOLESTEROL (POLYVINYL SULPHATE METHOD)	Precipitant		
LDL-CHOLESTEROL DIRECT	Liquid Reagents	Two Reagents	
MUCOPROTEINS	Liquid Reagents	Two Reagents	Standard included
TOTAL PROTEINS	Liquid Reagent	One Reagent	
TRIGLYCERIDES	Liquid Reagent	One Reagent	Standard included
UREA COLOR	Lyophilized		Standard included
UREA UV	Liquid Reagent		Standard included
URINE PROTEINS (Pyrogallol red method)	Liquid Reagent	One Reagent	Standard included
URIC ACID	Liquid Reagent	One Reagent	Standard included

ENZYMES

ACID PHOSPHATASE (ACP)	Lyophilized		
ALKALINE PHOSPHATASE (ALP) - DEA	Liquid Reagents	Two Reagents	
ALKALINE PHOSPHATASE (ALP)	Lyophilized		
AMYLASE	Liquid Reagent	One Reagent	
CK-MB (WITH CONTROL)	Lyophilized		
CK-NAC	Liquid Reagents	Two Reagents	
CK-NAC	Lyophilized		
CHOLINESTERASE	Lyophilized		
CHOLINESTERASE	Liquid Reagents	Two Reagents	
GGT	Liquid Reagents	Two Reagents	
GGT	Lyophilized		
GOT/AST	Liquid Reagents	Two Reagents	
GOT/AST	Lyophilized		
GPT/ALT	Liquid Reagents	Two Reagents	
GPT/ALT	Lyophilized		
LDH	Liquid Reagents	Two Reagents	
LDH	Lyophilized		
LIPASE COLOR	Liquid Reagents	Two Reagents	Standard included

ELECTROLYTE

CALCIUM ARSENazo III	Liquid Reagent	One Reagent	Standard included
CALCIUM ORTHO-CRESOPHTHALEIN	Liquid Reagents	Two Reagents	Standard included
CHLORIDE	Liquid Reagent	One Reagent	Standard included
COPPER LIQUID	Liquid Reagents	Two Reagents	Standard included
IRON - CAB (CHROMAZUROL B METHOD)	Liquid Reagent	One Reagent	Standard included
IRON FERENE	Liquid Reagents	Two Reagents	Standard included
IRON FERROZINE	Liquid Reagents	Two Reagents	Standard included
MAGNESIUM (XYLIDYL BLUE METHOD)	Liquid Reagent	One Reagent	Standard included
MAGNESIUM (CALMAGITE METHOD)	Liquid Reagents	Two Reagents	Standard included
PHOSPHORUS INORGANIC U.V.	Liquid Reagent	One Reagent	Standard included
PHOSPHORUS INORGANIC VISIBLE	Liquid Reagent	One Reagent	Standard included
TIBC	Precipitant		
ZINC	Liquid Reagents	Two Reagents	Standard included

CONTROLS AND CALIBRATORS

ASSAYED MULTICOMPONENT HUMAN SERA - NORMAL	Multiparameter		
ASSAYED MULTICOMPONENT HUMAN SERA - ABNORMAL	Multiparameter		
CALIBRATOR	Multiparameter		
CK-MB CONTROL			
HDL/LDL CALIBRATOR			
HDL/LDL CONTROL			
MUCOPROTEIN STANDARD			
PROTEINS CALIBRATOR			
PROTEINS POSITIVE CONTROL			

Multiparameter
Multiparameter
Multiparameter

Multiparameter
Multiparameter

OTHER KITS

ACETIC ACID UV
AMMONIA (CHROMATOGRAPHIC)
CARBOXYHEMOGLOBIN
CITRIC ACID UV (SEMINAL LIQUID)
CITRIC ACID UV (URINE)
FRUCTOSAMINE
FRUCTOSE UV (SEMINAL LIQUID)

GLUCOSE/FRUCTOSE UV
HB-A1C ENZYMATIC DIRECT
HB-A1C CALIBRATOR SET
HB-A1C CONTROL SET
HB-A2
HEMOGLOBIN GLYCATED (RESIN METHOD)
LITHIUM

METHAEMOGLOBIN
5-NUCLEOTIDASE
OXALATE (URINE)
POTASSIUM
SALICILATE
SODIUM
ZINC (SEMINAL LIQUID)

TURBIDIMETRY

α1- ACID GLYCOPROTEIN	One Reagent	Turbidimetry
ANTITHROMBIN III	Two Reagents	Turbidimetry
ASO TURBIDIMETRIC LATEX WITH STANDARD	Two Reagents	Turbidimetry Latex
CRP TURBIDIMETRIC LATEX WITH STANDARD	Two Reagents	Turbidimetry Latex
CRP TURBIDIMETRIC	One Reagent	Turbidimetry
CRP LATEX ULTRA SENSITIVE	Two Reagents	Turbidimetry Latex
CERULOPLASMIN	One Reagent	Turbidimetry
COMPLEMENT COMPONENT C3	One Reagent	Turbidimetry
COMPLEMENT COMPONENT C4	One Reagent	Turbidimetry
FERRITIN	Two Reagents	Turbidimetry Latex
KAPPA LIGHT CHAIN (SERUM AND URINE)	Two Reagents	Turbidimetry
IMMUNOGLOBULIN A (IgA)	One Reagent	Turbidimetry
IMMUNOGLOBULIN G (IgG)	One Reagent	Turbidimetry
IMMUNOGLOBULIN M (Ig M)	One Reagent	Turbidimetry
LAMBDA LIGHT CHAIN (SERUM AND URINE)	Two Reagents	Turbidimetry
MICROALBUMIN	Two Reagents	Turbidimetry
RF TURBIDIMETRIC LATEX WITH STANDARD	Two Reagents	Turbidimetry Latex
TRANSFERRIN	One Reagent	Turbidimetry

TURBIDIMETRY DoA

AMPHETAMINE	COCAINE
BARBITURATE	COTININE
BENZODIAZEPINES	ECSTASY
BUPRENORPHINE	METHADONE
CANNABINOID	OPIATES

TURBIDIMETRY TDM

PARACETAMOL	VALPROIC ACID
SALICYLATE	CARBAMAZEPINE
PHENOBARBITAL	DIGOXIN
PHENYTOIN	THEOPHYLLINE
GENTAMICIN	

CALIBRATORS AND CONTROLS FOR TURBIDIMETRY DoA, TDM

SPECIAL KITS

α - FETOPROTEIN (AFP)	MYELOPEROXIDASE (MPO)
ADENOSINE DEAMINASE (ADA)	MYOGLOBIN
ALPHA - L - FUCOSIDASE (AFU)	N - ACETYL - B - D - GLUCOSAMINIDASE (NAG)
CARBON DIOXIDE (CO2)	PROCALCITONIN (PCT)
CARCINO EMBRYONIC ANTIGEN (CEA)	RETINOL BINDING PROTEIN (RBP)
CYSTATIN C	TOTAL BILE ACID
D - DIMER	TOTAL BILE ACIDS COLORIMETRIC
GLYCATED SERUM PROTEIN (GLICATED ALBUMIN)	TROPONIN I
HOMOCYSTEINE	

CLINICAL CHEMISTRY FOR OPEN SYSTEMS AND
FOR THE MOST IMPORTANT AUTOMATED ANALYZERS ON THE MARKET WITH DEDICATED BOTTLES
(ALSO WITH BARCODE):

PKL PPC, HITACHI*, OLYMPUS*, KONELAB*, MINDRAY*, RAYTO*, MIURA*, AMS* AND SO ON.

* The reported brand are of exclusive property of their respective manufacturers.

BOTTLES AVAILABLE FOR THE MOST ANALYZERS ON THE MARKET



**For Abbott*
Analyzer**



**For Beckmann*
Analyzer**



**For BIOSYSTEMS*
A15 and A25
Analyzer**



**For Fully*
Analyzer**



**For Hitachi*
Analyzer**



**For Konelab*
Analyzer**



**For Mindray* 200
Analyzer**



**For Mindray* 300
Analyzer**



**For Mindray* 400
Analyzer**



**For Mindray* 800
Analyzer**



**For Neusoft* 4002
Analyzer**



**For Olympus*
Analyzer**



**For PKL PPC 125
Analyzer**



**For PKL PPC 300
Analyzer**



**For Rayto
Analyzer**



**For Roche*
Analyzer**



**For Selectra*
Analyzer**



**For TARGA*
Analyzer**



**For Tokyo Boeki*
TMS-1024i
Analyzer**



**For Tokyo Boeki*
TMS-1036i
Analyzer**

WHAT YOU WANT, WE CAN SUPPLY

* The reported brand are of exclusive property of their respective manufacturers.

BOTTLES FOR OPEN SYSTEMS - BULK/OEM - SEVERAL SIZES



Biochemistry Reagents bottles
30-60-100-250 ml

Biochemistry Reagents bottles
10 ml

Dropping vials bottles
10 ml



Biochemistry Reagents bottles
120 ml



Biochemistry Reagents bottles
250 ml



Biochemistry Reagents bottles
500 and 1000 ml



Biochemistry Reagents in Bulk and Distilled Water (10 Liters)

CUVETTE FOR ANALYZERS



Cuvette for Mindray* 200



Cuvette for Mindray* 300



Cuvette for Konelab*



Cuvette for Hitachi*



Cuvette for PKL PPC

WHAT YOU WANT, WE CAN SUPPLY

* The reported brand are of exclusive property of their respective manufacturers.

PKL PPC 192

Electrolyte Analyzer



SPECIFICATIONS:

Display:	5.0 inch touch - screen TFT LCD
Sample position:	25 positions
Measuring time:	Support STAT test 40s (60s measuring time for sample introduction, measuring, cleaning and printing)
Sample volume:	100 μ l~150 μ l
Data storage:	10000, supporting automatic refresh, power-off protection and fuzzy query
Interface:	RS-232, USB for software upgrade and Bluetooth
QC:	Supporting graph review and statistical review

RANGE AND PRECISION:

Parameter	Range of Measurement	Resolution	Precision(CV%)
K ⁺	0.5~15.0mmol/L	0.01mmol/L	≤1.0%
Na ⁺	30~200mmol/L	0.1mmol/L	≤1.0%
Cl ⁻	30~200mmol/L	0.1mmol/L	≤1.0%
Ca ⁺⁺	0.1~5.0mmol/L	0.01mmol/L	≤1.0%
PH	4~9	0.01	≤0.5%
Li ⁺	0~3mmol/L	0.01mmol/L	≤1.5%
TCO ₂	4~70mmol/L	0.1mmol/L	≤3.0%

FEATURES:

- Friendly operation with touch screen
- Providing auto-sampling tray
- Adopting unique technology to improve the performance of the electrodes
- Providing closed integrated reagent pack to reduce biological pollution and improve the simplicity of operation
- The accuracy of the parameter iCa and pH measurement will not be affected in different operating ambient temperature
- Supporting bar code scanner and Bluetooth
- Intelligent bubble detection
- Liquid flow flushing: adopting wave theory, automatic gas-liquid piecewise flushing to reduce cross contamination and avoid clogging

PKL PPC 182

Electrolyte Analyzer



CE

- K, Na, Cl, Ca, Li, CO₂, pH, Mg, Ag
- 7" Color touch screen, easy to operate
- High accurate and long life electrode and TCO₂ sensor
- Programmable multi-format print-out
- Reagent pack, real time monitoring of reagent residual volume
- Up to 50,000 test results can be stored
- RS-232 port, supporting bar code reader and USB interface
- Sleep mode to reduce reagent consumption
- Auto Sampler
- Self-made ISE, maintenance free and long life span.
- Original reagent, proven quality and one source convenience

Option:

Parameter configuration:

A	K, Na, Cl
B	K, Na, Cl, TCO ₂
C	K, Na, Cl, iCa, nCa, TCa, pH
D	K, Na, Cl, iCa, nCa, TCa, pH, TCO ₂ , AG
F	K, Na, Cl, Li
G	K, Na, Cl, Li, TCO ₂
H	K, Na, Cl, iCa, nCa, TCa, pH, Li
I	K, Na, Cl, iCa, nCa, TCa, pH, Li, TCO ₂ , AG
J	K, Na, Cl, iCa, nCa, TCa, pH, Mg, TCO ₂ , AG
K	K, Na, Cl, iCa, nCa, TCa, pH, Li, Mg, TCO ₂ , AG

PKL PPC 800G

Quantitative Immunoassay Analyzer



TECHNICAL SPECIFICATIONS:

- Operational display: Colored HD touchscreen
- Principle of detection: Principle of light reflection
- Display of results: HbA1c: NGSP+IFCC
CRO: CRP+ hsCRP
- Memory storage: 300 test results
- Working environment: Temperature: 5-40°C/Humidity: 15-75%
- Size: 178 x 195 x77 (mm)
- Weight: 730g (excluding electrical charger)



Touchscreen

Colored HD touchscreen with user-friendly display.



Simple Operation

Simply insert the sample plate and allow the analyzer to load automatically. Operational errors are minimized.



Clear Instruction

Instructions are provided by intuitive graphical display and step-by-step voice instruction.



Quality Control

Automatic calibration of the device effectively guarantees the accuracy of the results. The results of quality control are stored separately and can be easily reviewed.



Convenient Sample Handling

Handy operation to reduce operational mistakes.



Patient ID/ Operator ID

Patient ID and operator ID can be imported by barcode scan



Examination Extension

The analyzer can be extended to perform several types of examinations (e.g. HbA1c, ACR, lactate, etc)

HbA1c Test Kit

Glycated Hemoglobin Test Kit

TECHNICAL SPECIFICATIONS:

- | | |
|---------------------------|--|
| • Principle of the assay: | Baronate affinity chromatography |
| • Total testing time: | Less than 3 minutes |
| • Measuring range: | 3%~15% (9~140mmol/mol) |
| • Applicable sample: | Finger prick or venous whole blood |
| • Sample volume: | 5 μ l |
| • Package: | Individual package for every test unit |

EXAMINATION PROCEDURE:



Sample

Put the 5 μ l sample into reagent R1 and mix thoroughly



Transfer

Transfer 25 μ l of the mixture to the cartridge



Elution

Add 25 μ l of reagent R2 to cartridge



Detection

Place the cartridge in analyzer for evaluation

CRP Test Kit

C-Reactive Protein Test Kit

TECHNICAL SPECIFICATIONS:

- | | |
|---------------------------|--|
| • Principle of the assay: | Baronate affinity chromatography |
| • Total testing time: | Less than 2 minutes |
| • Range of detection: | 2~220mg/L |
| • Applicable sample: | Peripheral vessel blood, venous whole blood, blood serum, blood plasma |
| • Sample volume: | 5 μ l |
| • Package: | Individual package for every test unit |

EXAMINATION PROCEDURE:



Sample

Put the 5 μ l sample into reagent R1 and mix thoroughly



Transfer

Transfer 25 μ l of the mixture to the cartridge



Reaction

Add 25 μ l of reagent R2 to the cartridge



Elution

Add a drop of reagent R3 to the cartridge



Detection

Place the cartridge in analyzer for evaluation

PKL PPC 90 Hemoglobin Meter

SPECIFICATIONS:

- Parameter: Hemoglobin, HCT (Hematocrit)
- Principle: Optical reflectance
- Sample: Capillary or venous whole blood (13~15 ul)
- Strip: H12 Hemoglobin Test Strip
- Speed: ≤ 10 seconds
- Measuring Range: 4.0g/dL~24.0g/dL(g/L optional)
- Memory: 250 test results
- Quality Control: HQ-A Hemoglobin control solution
- Calibration: Factory calibrated according to ICSH
- Automatization: Self-checking, auto-judging and displaying malfunction
- Power: DC 6V(Two CR2032 Batteries)
- Dimension: 102mm×50mm×19mm



PKL PPC 610H Hematology Analyzer 3- Part Diff

SPECIFICATIONS:

- Parameters: WBC, LYM#, MID#, GRAN#, LYM%, MID%, GRAN%, RBC, HGB, HCT, MCV, MCH, MCHC, RDW-CV, RDW-SD, PLT, MPV, PDW, PCT, P-LCR, P-LCC
3-part differentiation of WBC, 21 parameters and 3 histograms
- Principles of operation: WBC/RBC/PLT: Electrical Impedance
HGB: Photoelectric colorimetry
- Aspiration Volume: Whole blood 10μL, Pre-diluted 20μL
- Aperture Diameter: WBC 100μm, RBC/PLT 68μm
- Throughput: 60 samples per hour
- Data storage: More than 100,000 sample results with histograms
- Alarms: Error messages
- Dilution Ratio: Whole blood Capillary blood
WBC/HGB 1:232 1:400
RBC/PLT 1:40000 1:45000
- Display: 10.4 inches color LCD
- Control and calibration: L-J, X, X-R, X-B four control modes, manual and auto-Calibration
- Dimension: 330mm x 440mm x 500mm
- Power requirement: AC 100V – 240V, 50/60Hz, 180W
- Input/Output: Support RS232, standard network port and USB. Shortcut keys with standard mouse and keyboard. Internal 57mm thermal printer. Parallel Port and USB for external printer



PKL PPC 1040H

Hematology Analyzer 5-Part Diff



SPECIFICATIONS:

- 28 parameters: WBC,LYM%,MON%,NEU%,EOS%,BASO%,LYM#,MON#,NEU#,EOS#,BAS#,RBC,HGB, HCT,MCV, MCH,MCHC,RDW_CV,RDW_SD,PLT,MPV,PDW, PCT,P_LCR,P_LCC, RETIC_ABS,RETIC, IRF
2 Histograms for RBC and PLT
2 Scatter grams: 5-part differential scatter gram
Eosinophils and Moutrophils scatter gram
2 3-D stereograms
- Principles of operation: WBC/DIFF: Flow Cytometry, Laser light multi-dimensional cell classification
WBC Analysis: Optical and impedance measurements
RBC/PLT Analysis: Impedance method
HGB test: Cyanide-free reagent colorimetry
Diluent, Sheath, Detergent, Lyse
- Reagent: Diluent, Sheath, Detergent, Lyse
- Sampling modes: Whole blood 20 μ L
Pre-diluent 20 μ L
- Aperture Diameter: RBC/PLT 68 μ m; WBC 100 μ m
- Throughput: Whole blood up to 60 samples per hour
Pre-diluent up to 60 samples per hour
- Data storage: Up to 200,000 sample results with grams
- Alarms: Error messages
- Display: PC display (17inch color TFT)
- Dimension: 598.5MM(L) \times 585.5MM(W) \times 488.5MM(H)
- Power: 220V,50/60Hz 600VA
- Weigh: 70kg

PKL PPC 1100H

Hematology Analyzer 5 - Part Diff



SPECIFICATIONS:

- 27 parameters: WBC,LYM%,MON%,NEU%,EOS%,BAS%,LYM#,MON#,NEU#,EOS#,BAS#,RBC, HGB, HCT,MCV, MCH, MCHC,RDW_CV,RDW_SD,PLT,MPV,PDW,PCT,P_LCR,RETIC%,RETIC_ABS,IRF
2 Histograms for RBC and PLT
2 Scatter grams: 5-part differential scatter gram
Eosinophils and Neutrophils scatter gram
2 3-D stereograms
- Principles of operation: WBC 5-part:Flow Cytometry(FCM)+ 4 angles laser light scatter
WBC Analysis: Optical and impedance measurements
RBC/PLT Analysis: Impedance method
HGB test: Cyanide-free reagent colorimetry
RET test: Flow Cytometry(FCM)+laser light scatter+Chemical dye method
- Sampling modes: Auto loader 160 μ L, Manual mode 160 μ L, Pre-diluted mode 40 μ L
- Aperture Diameter: WBC 100 μ mRBC/PLT 80 μ m
- Throughput: Auto loader up to 110 samples per hour
Manual mode up to 100 samples per hour
- Sampling device: Automatic sampling device with a capacity of 120 samples,
10 samples \times 12 racks, auto built-in barcode reader
- Data storage: Up to 200,000 sample results with grams
- Alarms: Error messages
- Display: PC display with Linux system, 14 inch color TFT display
- Dimension: 760MM \times 684MM \times 676.5MM

PKL PPC 1150H

Hematology Analyzer

Laser light multi-dimensional cell classification
Resistant RBC mode
WIC and WOC for WBC counting
Up to 60 samples per hour throughput
With touch screen

CE



SPECIFICATIONS

	WBC,LYM%,MON%,NEU%,EOS%,BASO%,LYM#,MON#,NEU#,EOS#,BAS#, RBC,HGB,HCT,MCV,MCH,MCHC,RDW_CV,RDW_SD, PLT,MPV,PDW,PCT,P_LCR
	2 Histograms for RBC and PLT
24 parameters	2 Scatter grams: 5-part differential scatter gram Eosinophils and Noutrophils scatter gram
	WBC/DIFF: Flow Cytometry, Semi-conductor laser light multi-dimensional cell classification
Principle of operation	WBC Analysis: Optical and impedance measurements RBC/PLT Analysis: Impedance method HGB test: Cyanide-free reagent colorimetry
Reagent	Diluent, Sheath, Detergent, Lyse
Sampling modes	Whole blood : 20µL Pre-diluted: 20µL
Aperture Diameter	WBC 100µ m, RBC/PLT 68µ m
Throughput	Whole blood : up to 60 samples per hour Pre-diluted: up to 60 samples per hour
Data storage	Up to 200,000 sample results with grams
Alarms	Error messages
Display	10.4 inch with touch screen
Size	L490mm x H332mm x W459mm
Power	250VA
Weight	35KG



Main page



Calibration setting



QC setting



System maintenance

PKL PPC 1200H

Auto Hematology Analyzer

Laser light multi-dimensional cell classification
Resistant RBC mode
WIC and WOC for WBC counting
Up to 60 samples per hour throughput
WBC 5 part diff with sheath reagent only
Support both whole blood and capillary blood samples
Four reagents for 25 parameters

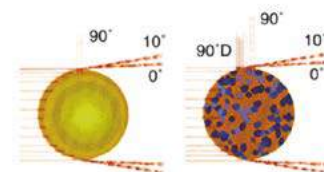


SPECIFICATIONS

	WBC,LYM%,MON%,NEU%,EOS%,BASO%,LYM#,MON#,NEU#,EOS#,BAS#,RBC,HGB,HC
	MCV,MCH,MCHC,RDW_CV,RDW_SD,PLT,MPV,PDW,PCT,P_LCR,P_LCC,
28 parameters	RETIC_ABS,RETIC, IRF
	2 Histograms for RBC and PLT
	2 Scatter grams: 5-part differential scatter gram
	Eosinophils and Neutrophils scatter gram
	2 3-D stereograms
	WBC/DIFF: Flow Cytometry, Semi-conductor,Laser light multi-dimensional cell classification
Principle of operation	WBC Analysis: Optical and impedance measurements
	RBC/PLT Analysis: Impedance method
	HGB test: Cyanide-free reagent colorimetry
Reagent	Diluent, Sheath, Detergent,Lyse
Sampling modes	Whole blood : 20μL
	Pre-diluted: 20μL
Aperture Diameter	WBC 100μ m, RBC/PLT 68μ m
Throughput	Up to 60 samples per hour with 50 autoloader positions
Data storage	Up to 200,000 sample results with histograms
Alarms	Error messages
Display	PC display
Size	660MM (L) × 565MM (W) × 545MM (H)
Power	220V,50/60Hz 300VA
Weight	73kg

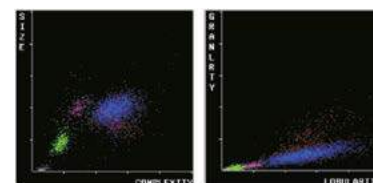
Semi-conductor laser

PKL PPC 1200H Auto Hematology Analyzer uses semi-conductor laser for the flow cytometry system. Through calculations of different angles via laser scatters, the instrument provides complete analysis including cell size, granularity and complexity.



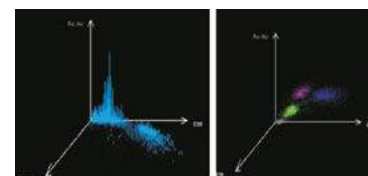
One channel give complete differentiate WBC

PKL PPC 1200H counts lymphocyte, monocyte, neutrophil, eosinophil and basophil in WOC channel.



3D stereograms

Not only scatter stereograms but also 3D stereograms are provided by **PKL PPC 1200H** than the WBC differentiation would be presented on different views.



ABBOTT Hematology

Hematology Reagents for CD3000,
CD3500,CD3700
Hematology Reagents for CD3200, Ruby
Hematology Reagents for
CD1400EX,CD1600,CD1700,CD1800
Hematology Reagents for CD1200

ABX HORIBA

Hematology Reagents for Micros 60, ES60, 45/
OT18, BAYER ADVIA60/Horiba-LC550
Hematology Reagents for Pentra60, Pentra80
Hematology Reagents for Pentra120

BECKMAN COULTER

Hematology Reagents for ACT 5diff, AcT 5diff AL,
AcT 5diff OV
Hematology Reagents for BECKMAN COULTER LH-
750, GEN-S, STKS, HmX, MAXM
Hematology Reagents for BECKMAN COULTER T,
JT, MD, ONYX
Hematology Reagents for BECKMAN COULTER
ACT-DIFF, ACT-DIFF 2

DIATRON

Hematology Reagents for DIATRON ABACUS
SERIES

DIRUI

Hematology Reagents for DIRUI 3-diff

DREW

Hematology Reagents for DREW EXCELL 16, 18
Hematology Reagents for DREW EXCELL 22

ERMA

Hematology Reagents for Erma PCE-210

GENIUS

Hematology Reagents for KT-6280, KT-6180, KT-
6280 VET, KT-6180 VET

HOSPITEX

Hematology Reagents for HEMASCREEN 18

HUMAN

Hematology Reagents for Humacount

HYCEL

Hematology Reagents for HYCEL Celly 70, 18
Hematology Reagents for HYCEL DIANA 5

J.T. BAKER

Hematology Reagents for BeneSphera H32
Hematology Reagents for BeneSphera H31

MAXCOM

Hematology Reagents for MC 3-diff serie

MEDONIC BOULE

Hematology Reagents for MEDONIC CA620,
CA610, CA570, CA530

MINDRAY

Hematology Reagents for BC 3000, BC 3000+,BC
2800, BC 2600, BC 2300, BC 3200, BC 3600
Hematology Reagents for BC 5500, 5200, 5800
Hematology Reagents for BC 5300, 5380

NIHON KOHDEN

Hematology Reagents for MEK-6318, 6400, 6420, 6410
Hematology Reagents for MEK-8222,7222

ORPHEE

Hematology Reagents for ORPHEE MYTIC 18

PHOENIX

Hematology Reagents for PHOENIX NCC-1211, NCC-
2310
Hematology Reagents for PHOENIX NCC-5500
Hematology Reagents for PHOENIX NCC-51
Hematology Reagents for PHOENIX NCC-3300
Hematology Reagents for PHOENIX NCC-VET30 3-diff
Hematology Reagents for PHOENIX NCC-VET60 5-diff

PKL PPC 3-DIFF HEMATOLOGY ANALYZERS

Hematology Reagents for PKLPPC510H, PKLPPC610H

PKL PPC 5-DIFF HEMATOLOGY ANALYZERS

Hematology Reagents for PKLPPC1040H, PKLPPC1100H

PROKAN

Hematology Reagents for PE Series

RADIM/SEAC

Hematology Reagents for HECO-5 Serie
Hematology Reagents for HECO S 3-diff Serie

RAYTO

Hematology Reagents for Rayto RT-7600,RT-
7600S,RT-7200

SEAC

Hematology Reagents for SEAC GENIUS

SFRI

Hematology Reagents for SFRI 3-diff serie

SIEMENS/BAYER

Hematology Reagents for SIEMENS/BAYER, ADVIA 70

SINOWA

Hematology Reagents for HB Series

SWELAB BOULE

Hematology Reagents for Swelab 910, 920, 970

SYSMEX

Hematology Reagents For XE-2100,XT-1800i/2000i,XS-
800i/1000i
Hematology Reagents For SF-3000
Hematology Reagents for KX-21,POCH100i
Hematology Reagents for K1000,K4500

TECOM

Hematology Reagents for TEK-3500/TEK-3600/TEK-II/
TEK-II PLUS/TEK-II MINI

URIT 3-DIFF HEMATOLOGY ANALYZERS

Hematology Reagents for URIT 3000, 3000 PLUS, 3010,
2900, 2900 PLUS

URIT 5-DIFF HEMATOLOGY ANALYZERS

Hematology Reagents for URIT 5250, 5380, 5500.

PKL PPC 100

Urine Analyzer

SPECIFICATIONS:

- Parameters: pH, Nitrite, Specific Gravity, Ascorbic Acid, Blood, Glucose, Bilirubin, Urobilinogen, Ketone, Leucocytes, Protein Measurement Principle: Dual wavelength reflectance method
- Measuring Wavelength: 3 LED Wavelength (550,620,720nm)
- Sample supply: manual dipping
- Reaction time: 60 seconds
- Throughput: Normal mode, 60 samples /hour
Continuous mode, 125 samples /hour
- Display: LCD screen
- Memory Capacity: 5000 results
- Strip: URIN 10G/11G urine reagent strips
- Interface: Serial port(RS232), parallel port (For external printer), PS/2(For barcode reader)
- Work condition: Environmental Temperature: 15-30°C, RH: 20%~80%
- Power supply: Adopter 12V DC, 4.0A
- Dimension: 290mm x 200mm x 100mm
- Weight: 2kg



PKL PPC 160

Urine Analyzer

SPECIFICATIONS:

- Parameters: pH, Nitrite, Ascorbic Acid, Protein, Specific Gravity, Blood, Glucose, Bilirubin, Urobilinogen, Ketone, Leucocytes
- Measurement Principle: Dual wavelength reflectance method
- Measuring Wavelength: 3 LED Wavelength (550,620,720nm)
- Reaction time: 60 seconds
- Throughput: 520 samples /hour
- Display: LCD screen
- Memory Capacity: 5000 results (3000 results with barcode)
- Strip: URIN 10G/11G urine reagent strips
- Interface: Serial port(RS232), parallel port (For external printer), PS/2(For barcode reader)
- Work condition: Environmental Temperature: 15-30, RH:20%~80%
- Power supply: 100~240V AC,50/60Hz
- Dimension: 390mm x 340mm x 290mm
- Weight: 6.5kg



URIN-300

Urine Analyzer

SPECIFICATIONS:

- Items of Analysis: Glucose (GLU), Bilirubin (BIL), Ketone (KET), Specific gravity (SG), PH, Occult blood (BLD), Protein (PRO), Urobilinogen (URO), Nitrite (NIT), Leukocytes (LEU), Ascorbic Acid (VC)
- Usable Reagent Strips: Only apply to the strips produced by the designated factory.
- Test Speed: 600 items per hour.
- Memory Mode: Microprinter.
- Print Paper: The thermal print paper (Width: 57mm, diameter of paper roll: <50mm).
- Language: English.
- Relative Humidity: $\leq 90\%$.
- Working Temperature: $0^{\circ}\text{C} \sim 40^{\circ}\text{C}$.
- Power Consumption: $< 50\text{VA}$.
- Security Class: 1 class.
- Mains: $\text{AC}220\text{V} \pm 15\%$ $50\text{Hz} \pm 2\text{Hz}$
- Fuse Box: $\Phi 5 \times 20$, 0.5A
- Form Dimension: $425 \times 425 \times 385\text{mm}$



PKL URINE STRIPS

Item No.	Test Portion		Blood	Bilirubin	Urobilinogeno	Ketones	Protein	Nitrite	Glucose	pH	SG	Leucocytes	Ascorbic acid	Available Reader
	Product Name	Package size (tests)												
1	URS-Glucose								■					Visual*
2	URS-2P						■		■					Visual*
3	URS-2K					■			■					Visual*
4	URS-3						■		■	■				Visual*
5	URS-3K					■	■		■					Visual*
6	URS-4SG						■		■	■	■			Visual*
7	URS-5K					■	■		■	■	■			Visual*
8	URS-8SA		■	■	■	■	■	■	■	■				SUPER AUTION*
9	URS-9UB		■	■	■	■	■	■	■	■		■		AE-4020orAX-4280*
10	URS-9S		■	■	■	■	■	■	■	■	■			MN formula visual*
11	URS-10A		■	■	■	■	■	■	■	■	■	■		Clinitek serial analyzer*
12	URS-10H II		■	■	■	■	■	■	■	■	■	■		H-50,100,300,500*
13	URS-10D		■	■	■	■	■	■	■	■	■	■		MA-4210*
14	URS-10M		■	■	■	■	■	■	■	■	■	■		AM-4290*
15	URS-10SL		■	■	■	■	■	■	■	■	■	■		MN formula visual*
16	URS-11A		■	■	■	■	■	■	■	■	■	■	■	YE-120*
17	URS-11H II		■	■	■	■	■	■	■	■	■	■	■	H-50,100,300,500*
18	URS-11G		■	■	■	■	■	■	■	■	■	■	■	Uriscan Korea*



OTHER SIZES FOR OTHER INSTRUMENTS ON REQUEST

*The brands are the property of the respective manufacturers



PKL PPC 330 + 360

Complete Fully Automatic Urinalysis Workstation



PKL PPC 330

Automated Urine Analyzer



SPECIFICATIONS:

- Parameters: Glucose, Protein, Blood, Bilirubin, pH, Ketone, Ascorbic Acid, Urobilinogen, Nitrite, Leucocytes, Special Gravity, Creatinine, Microalbumin, Calcium, MA/CR, Color, Turbidity
- Wavelength: 5 LED wavelengths (430, 500, 565, 635, 760nm)
- Test Strip: Dual-wavelength reflectance photometry
- Specific gravity, color, turbidity: Physical Determinations
- Throughput: 300 samples/hour
- Required Urine Volume: 2.0ml, 3.0 ml for online mode
- Memory: Up to 4GB (up to 300000 results)
- Display: Large color touch LCD (8 inch)
- Maximal Racks: 110 samples, 10 samples × 11 racks
- Strip Capacity: 400 strips
- Printer: Internal thermal printer external printer is optional
- Interface: RS-232, LPT, LAN, USB, PS/2
- Dimension: 630mm × 626mm × 570mm (L × W × H)
- Weight: 55 kg
- Power: AC 100V~240V, 50/60Hz, 250VA

Fully Automatic



Stable Operating System:

- Linux OS

Structural Design:

- Simplified valve system to reduce fluid circuit complications and integrated pump for easy maintenance

Advanced Analysis Component:

- New CIS detection technology for faster and more accurate sample analysis

Stat Function



PKL PPC 360

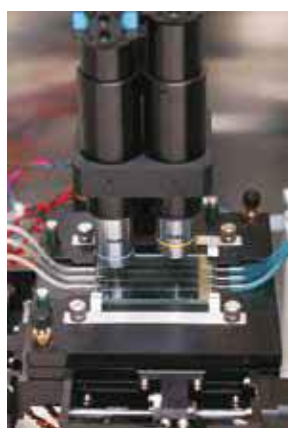
Automatic Urine Sediment Analyzer



CE

SPECIFICATIONS:

- Parameters: RBC, WBC, SQEP (squamous epithelial cells), NSE (non-squamous epithelial cells), pathological casts, mucus, crystals, bacteria, yeast, sperm, and others
- Principles of operation: Digital Image Processing
- Counting cell: Triple channels
- Display: 22-inch LCD
- Throughput: 70~100 samples / hour
- Test mode: Auto loader mode, STAT mode
- Bar code: Internal auto bar code reader
- Sample: Native urine samples or urine sediment samples
- Sample volume: 2.5ml non-centrifugal urine
- Batch size: 50 samples, 10 samples x 5 racks
- Memory Capacity: More than 50,000 results (include images)
- Connection: PKL series urine analyzer test data; Available for connect PKL PPC 330 Automatic Urine Analyzer
- Dimension: L650x W640x H560mm
- Weight : 60Kg
- Power: AC 100V~240V, 50/60Hz, 250VA



Triple Counting Channels – faster sampling and analysis with 3 flow cells to hold samples, duo lens and duo cameras for quicker analysis and better results

Powerful data management



Highly intelligence –Images automatic joining together, intelligent identification, Help recognition and review



PKL PPC 330 + 360

Complete Fully Automatic Urinalysis Workstation

- Fully automatic Urinalysis Workstation, providing optimized workflow, maximizing work efficiency.
- Full-closed hydrolic system, eliminating contamination.
- Providing comprehensive data for diagnosis.
- Offering a report that integrates the results of urine chemistry and urine sediment automatically, minimizing the manual work.
- STAT function for both urine chemistry and urine sediment.
- Huge storage of data, the storage can up to be 50,000 results with images, with powerful data management.

PKL PPC 120

Coagulation Analyzer

SPECIFICATIONS:

- Principle: dual-magnetic circuit bead method
- Parameter: PT (Prothrombin Time), APTT, (Activated Partial Thromboplastin Time), TT (Thrombin Time), FIB (Fibrinogen) Protein C, Protein S, HEP (High-molecular-weight Heparin), LMWH(Low-molecular-weight Heparin), LA (Lupus Anticoagulant), Thrombin factor II, V, VII, X, VIII, IV, IX, IX, X I, X II etc.
- Detector: 2 channels
- Incubator: 16 sample positions, 4 reagent positions (tunable incubation time)
- Data storage: 500 test results
- Display: 5.1" LCD screen
- Print: Built in printer & external printer
- Input / Output: RS-232 port and parallel interface
- Ambient: work temperature: 15~35°C; relative humidity: ≤80%RH
- Power: AC100V~240V, 50/60Hz, 45W
- Dimension: 380mm(W)×340mm(D)×130mm(H)
- Weight: 5.9 kg



PKL PPC 170

Coagulation Analyzer

SPECIFICATIONS:

- Principle: dual-magnetic circuit bead method
- Parameters: PT (Prothrombin Time) APTT (Activated Partial Thromboplastin Time) TT (Thrombin Time), FIB (Fibrinogen), Protein C, Protein S, HEP (High-molecular-weight Heparin), LMWH(Low-molecular-weight Heparin), LA(Lupus Anticoagulant), Thrombin factor II, V, VII, X, VIII, IV, IX, IX, X I, X II etc.
- Detector: 4 channelsIncubator: 16 sample positions, 4 reagent positions (tunable incubation time)
- Data storage: 500 test results
- Display: 5.1"LCD screenPrint: Built-in printer & external printer
- Input / Output: RS-232 port and parallel interface
- Ambient: work temperature: 15~35°C; relative humidity: ≤80%RH
- Power: AC100V~240V, 50/60Hz, 45W
- Dimension: 380 mm(W)×40mm(D)×130mm(H)
- Weight: 5.9 kg



PKL PPC 175/175 Plus

Fully-auto Blood Coagulation Analyzer



SPECIFICATIONS:

Test methods:	Photoelectric colorimetry
Test item:	APTT, PT, TT, FIB D-Dimer optional (PKL PPC 175/175 Plus) PT-derived FIB function
Test speed:	100 T/H
Sample position:	5 sample positions
Tilt Reagent position:	6 reagent positions
Test position:	4 positions
Cleaning position:	1 position
Sample probe:	1 probe
Reagent system:	external card reader
Function:	Reagent position refrigeration function optional (175/175 Plus) Sample probe constant heating function Sample liquid level detection function Sample and reagent shortage alarm function Four directions ventilation cooling function LED work lighting function

FEATURES:

- Automatic and manual dual -model test capability
- Tilt reagent position to save reagent
- Display coagulation curve of dynamic test
- Automatic and manual calibration function
- Batch test and emergency priority insertion test function
- Abnormal test results alarm and automatic retest function
- Background scan of optical coagulation method, remove jaundice, high fat background interference function
- Cleaning solution shortage alarm and waste liquid overflow alarm function

COAGULATION REAGENTS

- PT
- APTT
- FIBRINOGEN
- D-DIMER
- PROTEIN C
- PROTEIN S
- CALCIUM CHLORIDE 0,020M
- CALCIUM CHLORIDE 0,025M
- CONTROL PLASMA FOR COAGULATION
- K3EDTA
- SODIUM CITRATE 3,8%
- EDTA



PKL PPC 140

Automatic ELISA Reader

SPECIFICATIONS:

- Plate type: 96-well plate or other plates
- Light source: 8V/20W Halogen lamp
- Wavelength range: 400-700nm
- Filters: 405, 450, 492, 630nm
- Accuracy: $\leq \pm 0.01A$
- Repeatability: $\leq 1.0\%$
- Linearity: $\leq \pm 1.0\%$ (0~1.5A)
- Resolution: 0.0001 Abs
- Reading speed: 5 seconds single-wavelength (96 wells)
- Reading channel: 8 channels
- Shaking: high, middle, low speed selectable
- Display: Large touch LCD



CE

- Memory: up to 10000 test results
- Printer: Built-in printer or external printer
- Output: RS-232 port
- Dimensions: 460mm×320mm×210mm
- Weight: 8kg

PKL PPC 230

Automatic ELISA Reader

Features:

- Accommodates different Microplate geometries
- Plate shaking facility with variable speed and duration
- Ability to read plate within seconds
- Digital light control with unique circuit for long lamp life
- Matrix mode for Result printing
- Multiple blank setting in cut off mode
- Storage of calibration curves
- Storage of Plate results
- Bichromatic and Trichromatic Readings
- Various Curve fit mode like: Linear, Point to Point will scales such as Log ABS/Conc, Logit ABS/Log Conc, ABS/Conc, Log ABS/Log Conc etc.



CE

TECHNICAL SPECIFICATIONS:

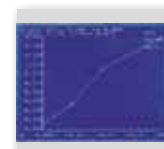
- Human Machine Interface: TOUCH PANEL/KEYPAD
- Linear Measurement Range: 0.000 to 3.500 Absorbance Units (A)
- Photometric Accuracy: $\pm 2\%$ or 0.007 whichever is higher, from 0 to 1.5 A, $\pm 3\%$ from 1.5 A to 3.5 A
- Drift: $< 0.005 A/hr$
- Optical measurement: 8 Channel
- Filters:
- Type of filter: High Quality Narrow band Interference
- Wavelength: 405nm, 450 nm, 492 nm, 630 nm
- Half Bandwidth: 10nm \pm 2nm
- Selection: Automatic by Stepper Motor
- Display: 6" Graphics LCD, Negative Blue, STN
- Curve Plotting: Graphical Representation on Printer
- Plate Carrier Movement: Precisely through the stepper motor
- Printer: Built in Thermal Printer 52 columns
- Memory: Battery back up for 250 tests and more than 2500 results
- Analysis Mode: Absorbance (Normal & Differential)
- Cut - off Multi - Standard
- % Absorbance Single Standard
- Uptake Kinetic
- RS232 Serial Port/USB: 9600 baud, 8 data, 1 stop, no parity bits/USB
- Power: 75 Watts/115 - 230 Volts $\pm 10\%$, 50/60 Hz
- Weight: 10 Kgs. (Approx)



Printer



Display



Graph

PKL PPC 150

Microplate Washer



SPECIFICATIONS:

- Plate type: U, V or flat-bottom
- Wash head: 8-probe or 12-probe
- Wash programs: up to 50
- Wash cycles: 1~20
- Volume range: 50~450 μ L/well
- Residual volume: <1 μ L/well
- Dispense precision: CV<2%
- Soak Time: 1~3660s tunable
- Pause Time: 0-60s tunable

- Absorbing Time: 2-10s tunable
- Shaking Time: 0-60s tunable
- Display: 240*128 LCD display
- Keypad: 8 touch keys
- Output: RS-232 port

PKL PPC 240

Automatic ELISA Washer

Features:

- Specially designed Manifold assembly to prevent any scratching on bottom of well
- Auto rinse facility while shut down
- Ability to wash single strip of 8 wells
- User programmable soak time, wash cycles and dispensing volume
- On Board two plate incubator at 37°C with programmable timer

Manifold



Incubator



Peristaltic Pump



- Waste bottle full warning with audible alarm
- Continuous aspiration to prevent overflow
- Removable manifold
- Cross wash/sweep wash facility
- Built-in stabilizer
- Auto detection of bottom of well and collision prevention

TECHNICAL SPECIFICATIONS:

- Manifold: 8 Way Manifold autoclavable
- Dispensing: Programmable up to 3000 μ l

Aspirating:

- Method: Continuous through diaphragm pump while dispensing hence preventing overflow
- Residual Volume: <2 μ l

- Waste Bottle: One (Capacity 2 litres) with audible alarm
- Wash Bottle: One (Capacity 2 litres)
- Display: 16 digit alphanumeric fluorescent
- Liquid contact materials: Silicon, Stainless Steel, Derline
- Memory: 100 open Channels
- Washing Method: Plate Wash, Strip Wash, Bottom Wash, Overflow Wash, Rinsing, Priming, Disinfect

- Shaking: Multi Step shaking
- Incubator: For Two ELISA Plates, 37°C
- Timer: Individually Programmable 2 Nos.
- Power: 50 Watts/115 - 240 Volts \pm 10%, 50/60 Hz
- Weight: 6 Kgs.



HUMAN ELISA TEST KIT

THYROID PANEL

TSH
T3
T4
FT3
FT4
ANTI TG
ANTI TPO
TRAB 3GEN
TG

FERTILITY PANEL

LH
FSH
PROLACTIN
HCG VISUAL
PROGESTERONE
TESTOSTERONE
ESTRADIOL
AMH
INHIBIN A
INHIBIN B

ANEMIA PANEL

FERRITIN
VITAMIN B12
FOLIC ACID

KIDNEY DISEASE

NGAL

BONE METABOLISM

25OH VITAMIN D

DIABETES

GLUCAGON
INSULIN
C-PEPTIDE
ADH

TORCH*

ANTI TOXO IGM
ANTI TOXO IGG
ANTI CMV IGM
ANTI CMV IGG
ANTI RUBELLA IGM
ANTI RUBELLA IGG
ANTI HSV1 IGM
ANTI HSV1 IGG
ANTI HSV2 IGM
ANTI HSV2 IGG
ANTI HSV1+2 IGM

HEPATITIS*

ANTI HAV IGM
HBSAG
HBSAB
HBEAG
HBEAB
HBCAB
ANTI HBC IGM
ANTI HCV

OTHERS

MISCELLANEOUS
CALPROTECTIN

FOOD INTOLERANCE

SPECIFIC IGG - 24 FOOD ANTIGENS
SPECIFIC IGG - 88 FOOD ANTIGENS
SPECIFIC IGG₄ - 20 FOOD ANTIGENS
SPECIFIC IGG₄ - 24 FOOD ANTIGENS
SPECIFIC IGG₄ - 88 FOOD ANTIGENS

COELIACAL

GLIADIN/GLUTEN IGG
GLIADIN/GLUTEN IGA
GLIADIN/GLUTEN IGM

* CE pending

PKL PPC 960

Chemiluminescence Immunoassay Analyzer



Washing Station

- Three pairs of needlers for washing
- The inner wall of the needle is coated with Teflon to avoid further cross-contamination

Reaction cuvettes area

- Single-use cuvette
- Up to 288 pcs on board (96 pcs/rack, 3 racks)
- Continuous loading

Built-in barcode reader



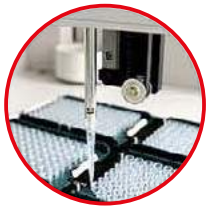
Throughput:

Up to 60 tests per hour

Smart size: benchtop, 80kg
92cm (H) x 63 cm (W) x 64 cm (D)

Sample and reagent area

- Customize the reagent and sample area on 16 tracks
- Support 1 to 15 reagent kits on board
- Maximum 75 samples on board
- Continuous loading sample and reagent



ADP

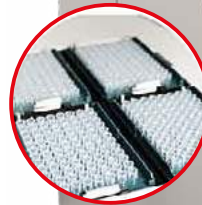
- High sensitivity liquid detection by integrated pressure sensor with 20μL dead volume
- No fluid system, maintenance free

Tips area

- Disposable tips for sampling and reagent pipetting
- Up to 384 pcs on board (96 pcs/rack, 4 racks)
- Continuous loading



Reagent loading by RFID reader



PKL PPC 960

Chemiluminescence Immunoassay Analyzer

THYROID



- TSH
- Free T3
- Free T4
- Total T3
- Total T4
- TGAb
- TRAb*
- TG Thyroglobulin
- CT Calcitonin

CARDIAC MARKER



- Troponin I
- H-FABP
- NT-ProBNP
- CK-MB
- MYO
- D-Dimer
- Lp-PLA2*

FERTILITY/HORMONE



- Estradiol
- Progesterone
- Testosterone
- FSH
- LH
- Total hCGβ
- Free hCGβ
- AMH*
- Inhibin A*
- Inhibin B*
- hGH

PRENATAL SCREENING



- AFP
- PAPP-A
- Free-hCGβ
- uE3
- Prenatal Screening Software

THORCH



- TOXO IgG
- TOXO IgM
- Rubella IgG
- Rubella IgM
- CMV IgG
- CMV IgM
- HSV-1 IgG
- HSV-2 IgM
- HSV-2 IgG
- HSV-2 IgM

KIDNEY FUNCTION



- NGAL
- BETA 2-MG
- Cys-C
- RBP
- H-ALB

TUMOR MARKER



- AFP
- CEA
- CA 125
- CA 15-3
- CA 19-9
- SCCA
- Total PSA
- Free PSA
- CA50
- NSE
- CA72-4
- CA242
- HE4
- CYFRA21-1
- PGI
- PGII

INFLAMMATION



- PCT
- CRP
- IL-6

ANEMIA



- Ferritin
- Folate
- Vitamin B12

INFECTION DISEASES



- HBsAg
- HBsAb
- HBeAg
- HBeAb
- HBcAb
- Anti-HCV
- Anti-TP
- HIV Ag/Ab*

BONE METABOLISM



- 25-OH-Vit D Total
- Intact PTH
- BGP

DIABETS



- Insulin
- C-Peptide
- INS-Ab
- GAD65

HEPATIC FIBROSIS



- CG
- FIIIINP
- CIV
- LN
- HA

ALLERGY

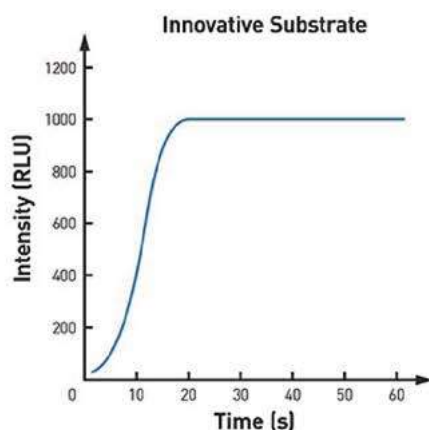


- Ig E

Under Development
* CE Pending for Infectious Diseases / Torch

Key Technologies

- Principle: Glow Chemiluminescence
- Labeling: Alkaline Phosphatase [ALP]
- Separation: Magnetic Microbeads
- FITC/ anti-FITC connected bridge



- Reaction within 20 seconds



- 50/100 tests package
- Integrated kits, ready-to-use
- Calibrators and QC included
- 2-point calibration
- Free calibration and QC testing
- Calibration stability: Max 4 weeks
- Open-pack stability: Up to 4 weeks

PKL PPC 820

Specific Protein Analyzer



Principle: Immuno Scatter Nephelometry

Test item: CRP/hsCRP/HbA1C/mALB/ASO/RF/Cys-C/D-Dimer up to 28 assays

Main Features:

- 7 inch Color Touch Screen
- 1,2,4 independent channels to test different items simultaneously
- RF card design to simplify operation, automatic calibration
- Automatic mixing and blanking
- Short test time with high efficiency and precision
- Build-in thermal printer
- Support LIS software

Testing procedure:

Step 1: Read card, automatic calibration;

Step 2: Add diluted sample into measuring cups;

Step 3: Add anti-body, automatic mixing, blanking and testing.



PKL PPC 820

Specific Protein Analyzer

Item	Sample	Range	Precision (CV)
hsCRP	Blood/Serum	0.4 ~350mg/L	≤5%
HbA1C	Blood	3%~15%	≤5%
mALB	Urine	5-220mg/L	≤5%
ASO	Serum	50-600IU/L	≤6%
RF	Serum	3~160IU/L	≤6%
Cys-C	Serum	0.3~8mg/L	≤10%
D-Dimer	Serum	0.3~20mg/L	≤8%

Specification:

Measuring time:	60 seconds (CRP), 3 minutes (HbA1C), 4minutes (ASO), 3 minutes (RF), 3minutes (Cys-C), 4 minutes (D-Dimer),
Sample:	blood, serum, urine
Storage capacity:	10,000 test result
Printer:	Internal printer
Interface:	RS232, can connect PC and external printer
Display:	7 inch touch screen
Working Temperature:	10-30°C
Power Supply:	110-240V, 50/60Hz
Dimensions:	38.6 x 27 x 15.5cm

PKL PPC 840

Auto ESR Analyzer

CE



Features:

- Large color display, touch screen
- 40 channels, up to 80T/H
- Two working method: 30 mins or 60 mins
- ESR curve display and print out
- Barcode reader optional
- Can connect LIS

Specifications:

Field of application	Erythrocyte sedimentation rate analysis
Measuring principle	Infrared sensor
Analysis result	Westergren ESR value (mm/hr)
Throughput	Up to 80 samples per hour
Reading channels	40
Loading capacity	40 sample at same time
Loading pattern	Random
Measuring time	30 minutes or 60 minutes selectable
Sample interval	3 minutes
Measurement range	(1-140)mm/h
Temperature compensation	Refer to 18°C automatically (selectable)
Reading resolution	±0.1 mm
Result resolution	1mm/1h, 1mm/2h
Blood level range	50mm~64mm
Display	Color LCD screen
Input	Touch screen
Interface	RS-232 serial port
Print	Internal thermal recorder
Storage	4,000results
Power supply	AC100-240V, 50-60Hz, 50W
Operation conditions	Temperature 5°C~40°C Humidity ≤80%
Dimension	365mm × 300mm × 180mm (L×W×H)
Net weight	11Kg

CENTRIFUGES

- High speed centrifuge
- Low speed centrifuge
- PRP centrifuge
- Refrigerated centrifuge
- Blood bank/ Blood bag centrifuge
- Mini centrifuge
- Cyto/Cytology centrifuge
- Rotor and Tube
- Blood card/Gel card centrifuge



- Crude oil test centrifuge
- Incubator
- PRP kits

**Swing rotor
6x2400ml f**



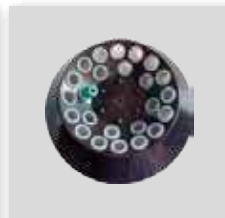
**6x15ml
angle rotor 600**



**Hematocrit
rotor 24 ca**



**Angle rotor
24x10ml**



**Angle rotor
12x15ml**



**angle rotor
6x100ml**



**12 blood cards
rotor**



**swing rotor
72x10ml**



**Swing rotor
24x15ml**



**Swing rotor
4x50ml**



**Cyto-1/
Cytology centri**



**Blood card
rotor-NO:21**



**Fixed rotor-
NO:30120**



**Fixed rotor-
NO:30123**



**Swing rotor
round cup/**



**Swing rotor-
NO:30399**



**Fixed rotor-
NO:30401**



**Fixed rotor-
NO:30403**



**Angle rotor
12 x 15ml**



**Angle rotor
4 x 100ml**



AND OTHERS

COMPLETE CATALOGUE ON REQUEST

PKL PPC 512

Microfuge-24 Centrifuge

Features:

- This unit is designed for flexibility and ease of use in the laboratory, hospital and blood bank.
- Brushless frequency motor for model PPC 512, free maintenance, no powder pollution, quick in speed up and down.
- Emergency lid opening switch, rubber fastenings, small vibration and vibration-free operation.
- There are 10 kinds of program and 10 kinds of acceleration and deceleration for your choice.
- Micro computer control system, LCD display the RCF time and speed.
- 12 capillaries and 24 capillaries rotors for your choice.
- Safety shut-off switch in lid, compact design, super speed and imbalance protection.
- The centrifuge body is made of high-quality steel, very safe and reliable.



PKL PPC 504A Technical Data:

- Max speed: 12000rpm
- Max RCF: 15800xg
- Max volume: 24 pieces capillary
- Power supply: AC220V 50HZ
- Timer: 0~99min
- Noise: ≤55dBA
- Dimension(LxWxH): 355×270×205mm
- Weight: 13KG
- Speed accuracy: ±10rpm
- Package: Carton box

Rotors for PKL PPC 512:

Max Speed (rpm)	Max Volume (ml)	Max RCF (g)
12000	12 pieces capillary	15800
12000	24 pieces capillary	15800

PKL PPC 504A

Biofuge-12 Centrifuge

Features:

- Widely used in hospital, laboratory and blood bank.
- Brushless DC motor for model PPC 504A which in great torque, free maintenance, no powder pollution, quick in speed up and down.
- The flexible axle driven system which drive the rotor directly, smooth in operation, low noise and small vibration.
- Micro computer control system, digital display the RCF time and speed. There are 10 kinds of program and 10 kinds of acceleration and deceleration for your choice.
- Electric lid lock, compact design, super speed and imbalance protection.
- The centrifuge body is made of high-quality steel, safe and reliable.



Technical Parameters:

- Max speed: 4000rpm
- Max RCF: 2250xg
- Max volume: 12x20ml
- Noise: ≤45dBA
- Timer: 0~99min
- Net weight: 23KG
- Dimension(HxDxW): 265×483×320mm
- Power supply: AC 220V 50HZ 2A
- Speed accuracy: ±10rpm
- Package: carton box



Rotors for PKL PPC 504A:

Rotor No.	Max Speed (rpm)	Max Volume (ml)	Max RCF (g)
Angle Rotor	4000	30×7/5ml	2250
Angle Rotor	4000	18×10ml	2250
Angle Rotor	4000	24×10ml	2200
Angle Rotor	4000	12×15/7/5ml	2150
Angle Rotor	4000	12×20ml	2220
Angle Rotor	4000	12×10ml Vacuum tube	2150
		1w2×7ml Vacuum tube adapter	
		12×5ml Vacuum tube adapter	

PKL PPC 505

Biofuge-24 Centrifuge



Features:

- PPC 505 centrifuge is of microprocessor control, less noisily, it is widely used to qualitative analysis of blood serum, plasma and urea in the fields of hospital, blood center, beauty industry and biochemistry.
- Brushless frequency motor for model PPC 505 which in great torque, free maintenance, no powder pollution, quick in speed up and down.
- The flexible axle driven system which drive the rotor directly, smooth in operation and small vibration.
- There are more than 20 kinds of rotors for

your choice, suitable for different customers' requirements of separation.

- Micro computer control system, digital display the RCF time and speed. There are 10 kinds of program and 10 kinds of acceleration and deceleration for your choice.
- Automatically electric lid lock, compact design, super speed and imbalance protection.
- The centrifuge body is made of high-quality steel, safe and reliable.

PKL PPC 505 Technical Parameters:

- | | | | |
|---------------|---------|---------------------|-----------------|
| • Max speed: | 5000rpm | • Net weight: | 35KG |
| • Max RCF: | 4420xg | • Dimension(HxDxW): | 320x568x400mm |
| • Max volume: | 4x250ml | • Power supply: | AC 220V 50HZ 5A |
| • Noise: | ≤58dBA | • Speed accuracy: | ±20rpm |
| • Timer: | 0~99min | • Package: | carton box |

Rotor Type	Max speed (rpm)	Max Volume (ml)	Max RCF (g)
Swing out rotor	4000	4x250ml (round cup)	2880
Matched for the 40401-40408 adapter			
Swing out rotor	4000	4x250ml (square cup)	2830
Swing out rotor	5000	4x50ml	4420
Swing out rotor	5000	4x100ml	
Swing out rotor	4000	8x50ml	2950
Swing out rotor	4000	16x15ml	
Swing out rotor	4000	24x15ml	
Model	Max speed (rpm)	Max Volume (ml)	Max RCF (g)
Swing out rotor	4000	32x10ml vacuum tube	2580
Swing out rotor	4000	32x7ml vacuum tube adapter	
Swing out rotor	4000	32x5ml vacuum tube adapter	
Swing out rotor	4000	24x10ml vacuum tube	2580
Swing out rotor	4000	24x7ml vacuum tube adapter	
Swing out rotor	4000	24x5ml vacuum tube adapter	
Swing out rotor	4000	16x10ml vacuum tube	2580
Swing out rotor	4000	16x7ml vacuum tube adapter	
Swing out rotor	4000	16x5ml vacuum tube adapter	
Micro plate rotor	4000	6x48 well	2300
		4x96 well	2490
Angle Rotor	5000	6x15ml	2540
Angle Rotor	5000	12x15ml	3080
Angle Rotor	5000	24x15ml	3500
Angle Rotor	5000	4x50ml	2520
Angle Rotor	5000	6x50ml	2850
Angle Rotor	5000	12x50ml	3860
Angle Rotor	5000	4x100ml	2630
Angle Rotor	5000	6x100ml	3130
Angle Rotor	4000	12x100ml	2970

PKL PPC 505A

Biofuge-32 Centrifuge



Features:

- PPC 505A centrifuge is of microprocessor control, less noisily, it is widely used to qualitative analysis of blood serum, plasma and urea in the fields of hospital, blood center, beauty industry and biochemistry.
- Brushless frequency motor for model PPC 505A which in great torque, free maintenance, no powder pollution, quick in speed up and down.
- Quiet, smooth in operation and small vibration.
- There are more than 20 kinds of rotors for your choice, suitable for different customers' requirements of separation.
- Micro computer control system, digital display the RCF time and speed. There are 10 kinds of program and 10 kinds of acceleration and deceleration for your choice.
- Automatically electric lid lock, compact design, super speed and imbalance protection.
- The centrifuge body is made of high-quality steel, safe and reliable.

PKL PPC 505A Technical Parameters:

- Max speed: 5000rpm
- Max RCF: 4730xg
- Max volume: 4x300ml
- Noise: $\leq 58\text{dBA}$
- Timer: 0~99min
- Net weight: 52KG
- Dimension(HxDxW): 360x621x450mm
- Power supply: AC 220V 50HZ 5A
- Package: carton box or wooden box
- Speed accuracy: $\pm 20\text{rpm}$

Centrifuge Model	Max speed (rpm)	Max Volume (ml)	Max RCF (g)
Swing out rotor	4000	4x300ml round cup 250ml bottle	2920
Matched for the 40401-40408 adapter			
Swing out rotor	475	4x300ml (cubic cup)	2920
Matched for the 40601-40608 adapter			
Microplate rotor	4000	8x96well	2490
	4000	6x48well	2300
Centrifuge Model	Max speed (rpm)	Max Volume (ml)	Max RCF (g)
Swing rotor body			
Matched Buckets for Swing rotor body	5000	4x50ml	4730
		4x100ml	4730
	4000	8x100ml	3020
		8x50ml	3200
		16x15ml	3200
		24x15ml	3200
		32x15ml	3200
	4000	48x5mlVacuum tube	2480
		48x7mlVacuum tube	2760
		48x10mlVacuum tube	2880
		32x10mlVacuum tube	2790
		32x5mlVacuum tube adapter	
		32x7mlVacuum tube adapter	
		24x10mlVacuum tube	2790
		24x5mlVacuum tube adapter	
		24x7mlVacuum tube adapter	
Matched buckets for Swing rotor body	4000	16x10mlVacuum tube	2790
		16x5mlVacuum tube adapter	
		16x7mlVacuum tube adapter	
Swing out rotor	4000	88x5ml Vacuum tube	2840
		72x10ml Vacuum tube	
Angle Rotor	5000	6x15ml	2540
Angle Rotor	5000	12x15ml	3080
Angle Rotor	5000	24x15ml	3500
Angle Rotor	5000	30x15ml	3830
Angle Rotor	5000	4x50ml	2520
Angle Rotor	5000	6x50ml	2850
Angle Rotor	5000	12x50ml	3860
Angle Rotor	5000	24x50ml	4640
Angle Rotor	5000	4x100ml	2630
Angle Rotor	5000	6x100ml	3130
Angle Rotor	4000	12x100ml	2970

PKL PPC 506R

Refrigerated Centrifuge



		Max speed (rpm)	Max capacity (ml)	Max RDF (g)
		16000	6x100ml	20600
NO30146	Angle Rotor	15000	30x0.5ml	18510
NO30402	Angle Rotor	14000	40x0.5ml	19970
NO30401	Angle Rotor	16000	12x1.5/2ml	16270
NO30403	Angle Rotor	15000	24x1.5/2ml	20600
NO30404	Angle Rotor	13500	30x1.5/2ml	19340
NO30444	Angle Rotor	11000	48x1.5/2ml	12840
NO30405	Angle Rotor	15000	16x5ml	19350
NO30406	Angle Rotor	14000	12x7ml	16370
NO30415	Angle Rotor	14000	6x10ml	16460
NO30408	Angle Rotor	13000	12x10ml	14510
NO30407	Angle Rotor	10000	12x15ml	11840
NO30639	Angle Rotor	5000	24x15ml	3080
NO30627	Angle Rotor	5000	30x15ml	3830
NO30409	Angle Rotor	12000	8x20ml	14510
NO30410	Angle Rotor	12000	6x30ml	14000
NO30411	Angle Rotor	11000	6x50ml	13480
NO30412	Angle Rotor	12000	6x70ml	10810
NO30413	Angle Rotor	12000	4x100ml	14850
NO30414	Angle Rotor	8000	6x100ml	7280
NO30437	Angle Rotor	12000	24piecescapillaryvessel	15800
NO30980	Swing out rotor	13000	4x5ml	14960
NO30676	Microplate rotor	4000	2x3x48 Well	2300
NO30935	Vertical rotor	14000	16x5ml	12660

PMC-5

Biological Microscope Base

Personal belonging of young scientists

PMC-5 biological microscope with elaborate appearance and reliable quality, is beautiful and practical. Its easy operation and clear image inspire students' imagination and interesting of microscopy world, is helpful to explore the mystery of life science. New generation of scientists are born from here.



Item	Magnification	N.A.	W.D.(mm)	Cover glass(mm)	Parfocal distance(mm)	Conjugate distance(mm)
Achromatic objective	4x	0.10	21.30	0.17	45	195
	10X	0.25	6.40			
	40XS	0.65	0.48			
	100XS (oil)	1.25	0.15			
Plan achromatic objective	4x	0.10	15.10	0.17	45	195
	10X	0.25	1.50			
	20X	0.40	8.70			
	40XS	0.65	0.38			
	100XS (oil)	1.25	0.09			

PMC-30

Biological Microscope High



- **Optical system:** Infinity color corrected optical system
- **Eyepiece:** PL 10X/20T plan eyepiece 10X with adjustable diopter, field scope 20mm
PL 10X/22T plan eyepiece 10X with adjustable diopter, field scope 20mm
- **Objective:** OIP infinity plan achromatic objective 4x. 10x. 40x. 100x
- **Viewing head:** 30° gemel bioncular, Eyepiece tube can rotate 360°
30° gemel trinocular, Eyepiece tube can rotate 360°, fixed spectrospical ratio R:T=8:2
- **Nosepiece:** Reversed quintuple nosepiece
Reversed quadruple nosepiece
- **Condenser:** N.A. 1.25 Koehler illuminatory condenser group (with socket for phase contrast, darkfield device)
- **Focus adjustment:** Coarse focusing scope is 30mm, with tightness adjustment and place limit set
- **Illumination system:** 100V-240V fluctuate of voltage, Single high brightness 3W LED (predetermine filament center), adjustment of brightness



Darkfield observation



Simply polarizing observation



Phase contrast observation



Fluorescence observation

PMC-4

Stereo Microscope Base

CE



NEWLY DESIGNED ALL-IN-ONE BASE

Integrated stand with focusing bracket. Independent top and bottom LED illuminator with uniform light. The diascopic and episcopic illumination can be used simultaneously. Independent switch to adjust the intensity of brightness.

Secure low voltage, smaller power, less heat and long working time.

Build- in voltage 1 OOV - 240V with self- adaption

Post height 260mm

Stage size 275mmX180mmX47mm



ALL SORTS OF NEW STANDS

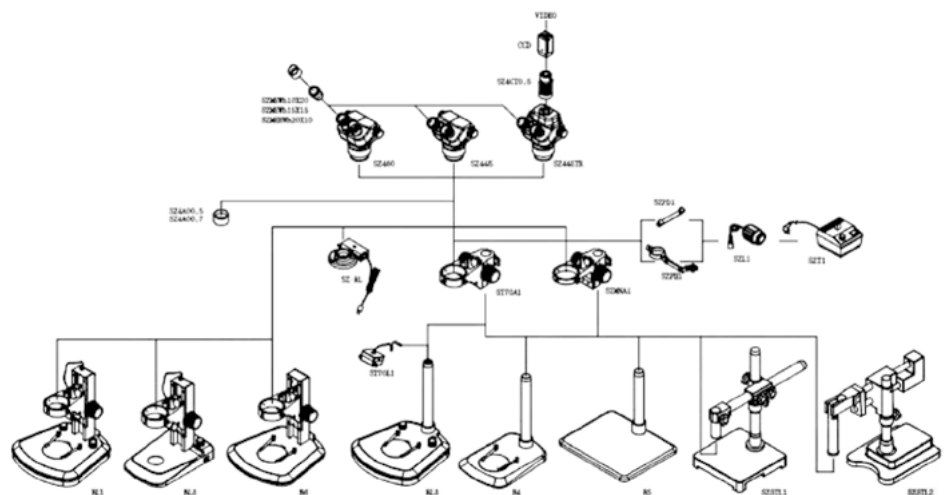
Particularly revolutionary appearance designed stands of exquisite workmanship.

Some are equipped with LED illumination, energy- saving, bright and safe.

You can make choices at your pleasure according to different applications.



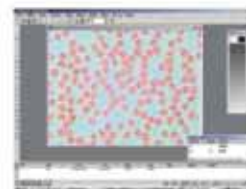
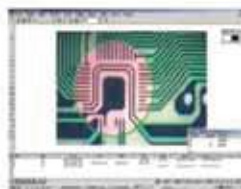
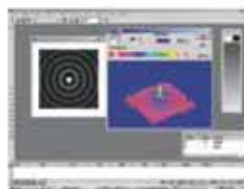
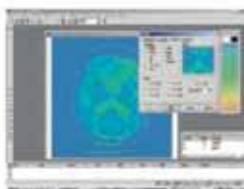
PMC-4 SYSTEM DIAGRAM



PMC-60

Stereo Microscope High

- New design of compact and comfort
- High-performance optical component and sharp image
- Wide viewing field, high magnification and special maximum working distance
- 8 inches LCD monitor and integrated stand



LAMINAR FLOW CABINETS

The laminar flow clean bench is a work bench or similar enclosure which has its own filtered air supply. It provides product protection by ensuring that the work in the bench is exposed only to HEPA-filtered air. Laminar flow clean benches are widely used in medical research laboratories, hospitals, manufacturing facilities and other research and production environments.



BIOSAFETY CABINET, CLASS I



** Complete Catalogue on request*

BIOSAFETY CABINET, CLASS II A₂

Small dimension, save space; easy to carry with handle.
Centrifugal fan, speed adjustable; H14 HEPA filter.
Large LCD display: Operators can check detailed status of the cabinet, such as inflow and downflow velocity, work area temperature and humidity, filter pressure, UV working time and filter working time, filter life indicator etc.



FUME HOOD

1. UV lamp sterilize the working area.
2. LCD displayscreen. See the air velocity directly.
3. The fan is inside. Easy to install, save time.
4. The air velocity is adjustable (6 levels).
5. Electrical controlled glass.
6. Removable work surface. Easy to clean.

CO₂ INCUBATOR*



LABORATORY INCUBATORS



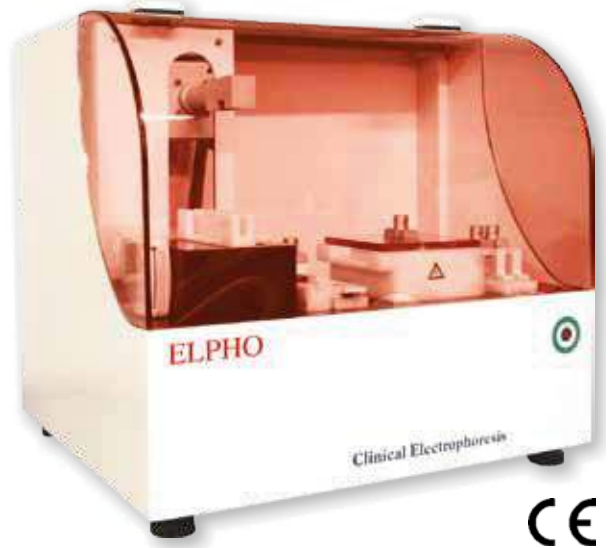
LABORATORY OVEN HOT AIR STERILIZER



ELPHO

TECHNICAL CHARACTERISTICS:

- Analysis Type: Serumprotein, Hemoglobin
- Supply in use: Mylar-supported cellulose acetate
- Analytical Capacity: 1 to 16 samples micro
- Technical Type: Micro
- Sample plate: Sample plate base and of the washable applicator drying
- Reading System: 8 Independent Channels
- Bright Source: 8 Led ultrabright
- Densitometer Linearity: 0 to 2,8 D.O.
- Maintaining Samples: Up to 1 Hour
- Migration Chamber Supply: Constant voltage variable from 50 Volts to 240 Volts, constant Current
- Robotic Arm: Mechanical plier with electronic control of the objects presence
- Washing Applicator: With automatic water circulation and drying
- Electrophoresis Chamber: Chambers can be both extractable in order to be filled, emptied and washed; or fixed with a total fluidic automation
- Level Liquid Control: In the internal small basins with time infrared probes; in the external tanks with immersion probes
- Interface: Computer Inside, USB, LAN, remote connection
- Power Supply: 220 - 240 V_{AC} 50 - 60 Hz
- Size: Cm 50 x 45 x 45 (LPH)
- Weight: 25 Kg
- S.O.: Windows 7 Lite, Windows 8
- User Interface: Keyboard and mouse
- Software: Dedicated Software with methodic Changeable Management



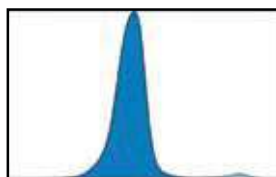
ANALISYS TYPE:

- Serum proteins



Albumin
Alpha 1
Alpha 2
Beta 1
Beta 2
Gamma

- Hemoglobin



HbA1
HbF
A2

...AND REAGENTS/CONSUMABLES



STAINS AND ANCILLARY

BACTERIOLOGY STAINS*

GRAM (CLASSIC)

CRYSTAL VIOLET
IODINE SOLUTION
GRAM DECOLORIZER
SAFRANIN
FUCHSIN GRAM

GRAM PVP

GRAM PVP KIT
IODINE PVP
TB ZIEHL-NEESEN KIT
CARBOL FUCHSIN
TB DECOLORIZER
KÜHNE'S METHYLENE BLUE

ZIEHL- NEESEN TENSIOACTIVE KIT

CARBOL FUCHSIN TENSIOACTIVE

TB KINYOUN

TB KINYOUN KIT

TB AURAMINE (FLUORESCENT STAINING)

TB AURAMINE (MORSE) KIT
AURAMINE
MT DECOLORIZER
MT POTASSIUM PERMANGANATE

TB AURAMINE-RHODAMINE (FLUORESCENT STAINING)

TB AURAMINE- RHODAMINE KIT
AURAMINE- RHODAMINE

OTHER STAINS

CARBOL GENTIAN VIOLET
LOEFFLER'S METHYLENE BLUE

HAEMATOLOGY STAINS*

GIEMSA

MAY GRUNWALD

QUICK PANOPTIC (READY TO USE)

QUICK PANOPTIC
QUICK PANOPTIC CONCENTRATED 1:10
WRIGHT



STAINS FOR
HAEMATOLOGY*

HISTOPATHOLOGY STAINS*

CARAZZI'S HEMATOXYLIN
HARRIS' HEMATOXYLIN
MAYER'S HEMATOXYLIN
ORANGE G-6 SOLUTION
POLYCHROMIC SOLUTION EA-36
POLYCHROMIC SOLUTION EA-50

OTHER STAINS*

ACRIDIN ORANGE
BRILLIANT CRESYL BLUE
EOSIN 1%
ALCOHOLIC EOSIN 1%
EOSIN-NIGROSIN
LACTOPHENOL BLUE
MASSON'S TRICHROME STAIN
NEISSER'S STAINING KIT
SUDAN BLACK, KIT

WATER TESTS KIT: CHEMISTRY*

WATER: CHLORINE
WATER: CHLORINE/PH

ANCILLARY PRODUCTS*

ACETONE
DEIONIZED WATER
FORMALDEHYDE (FORMALIN) 3.7-4.0%
FORMALDEHYDE (FORMALIN) 30-35%
FORMALIN SUBSTITUTE
GLYCERINE
HAYEM
IMMERSION OIL
METHANOL
PARAFFIN PEARLS (M.P. 56°-58°C)
PBS
SERUM SEPARATOR
TURK
VASELINE OIL
WASHING SOLUTION
EXTRA WASH KIT
XYLENE
XYLENE SUBSTITUTE

LABWARE*

GLASS STAINING JARS

GLASS STAINING JAR FOR 5 SMEARS
GLASS STAINING JAR FOR 9 SMEARS
GLASS STAINING JAR FOR 10 SMEARS

STAINING JAR SETS: GLASS JAR WITH COVER

+ STEEL RACK FOR SLIDES

STAINING JAR SET NR. 1 (JAR + RACK)
STAINING JAR SET NR. 2 (JAR + RACK)

SPARE STAINING RACKS

STEEL RACK FOR 30 SLIDES
STEEL RACK FOR 60 SLIDES
GLASS STAINING JAR FOR 30 SLIDES (WITHOUT RACK)
GLASS STAINING JAR FOR 60 SLIDES (WITHOUT RACK)

**Complete Catalogue on request*

HUMAN RAPID TEST*

ACUAL MYOCARDIAL INFRACTION
 DRUGS OF ABUSE
 FECAL OCCULT BLOOD TEST
 INFECTIOUS DISEASE

PREGNANCY
 TESTS FOR GYNAECOLOGY
 OTHERS METABOLITES



IMMUNOLOGICAL AND SERODIAGNOSTIC TESTS*



RADIAL IMMUNODIFFUSION PLATES*



ANTIBIOGRAM DISCS*



MICROPIPETTE PKL



FIX VOLUME PIPETTE

FIX MICROPIPETTE 5 μ l
 FIX MICROPIPETTE 10 μ l
 FIX MICROPIPETTE 20 μ l
 FIX MICROPIPETTE 25 μ l
 FIX MICROPIPETTE 50 μ l
 FIX MICROPIPETTE 200 μ l
 FIX MICROPIPETTE 250 μ l
 FIX MICROPIPETTE 500 μ l
 FIX MICROPIPETTE 1000 μ l
 FIX MICROPIPETTE 2000 μ l
 FIX MICROPIPETTE 5000 μ l

VARIABLE VOLUME PIPETTE

VARIABLE MICROPIPETTE 0,5-10 μ l
 VARIABLE MICROPIPETTE 2-20 μ l
 VARIABLE MICROPIPETTE 5-50 μ l
 VARIABLE MICROPIPETTE 10-100 μ l
 VARIABLE MICROPIPETTE 20-200 μ l
 VARIABLE MICROPIPETTE 50-200 μ l
 VARIABLE MICROPIPETTE 100-1000 μ l
 VARIABLE MICROPIPETTE 200-1000 μ l
 VARIABLE MICROPIPETTE 500-5000 μ l
 VARIABLE MICROPIPETTE 1000-5000 μ l

PIPETTE CONTROLLER PKL*



* Complete Catalogue on request

Plain Tube

- Plain Tube is used for determination in serology, drug monitoring and recommended blood banking
- Blood clotting time: 60 minutes.
- Centrifugation: 10~15 minutes with an rpm 3000~3800/min.
- Storage: room temperature (20~25°C).
- Packing: 100PCS/Tray.
- Single Use Only!! Dispose of the used tube according to your guideline.



Clot Activator Tube

- Clot Activator Tube is coated with Clot Activator on the interior of the tube wall to accelerate blood clotting.
- Clot Activator Tube is used for determination in chemistry, serology, immunology, electrolyte testing, etc.
- Invert Tube 3~5 times once blood specimen is collected. Blood clotting time: 15~30 minutes.
- SSGT tube should be centrifuged no later than 2 hours after collection.
- Centrifugation: 10~15 minutes with an rpm 3000~3800/min.
- Storage: room temperature (20~25°C).
- Packing: 100PCS/Tray.
- Single Use Only!! Dispose of the used tube according to your guideline.



SSGT (Serum Separating Gel Tube)

- SSGT Tube is coated with Clot Activator on the interior of the tube wall to accelerate blood clotting. A barrier polymer gel is presented at the tube bottom. The density of this material causes it to move upward during centrifugation to the serum-clot interface, where it forms a barrier separating serum from fibrin and cells.
- SSGT Tube is used for determination in chemistry, serology, immunology, electrolyte testing, etc.
- Invert Tube 3~5 times once blood specimen is collected. Blood clotting time: 15~30 minutes.
- SSGT tube should be centrifuged no later than 2 hours after collection.
- Centrifugation: 10~15 minutes with an rpm 3000~3800/min.
- Storage: room temperature (20~25°C).
- Packing: 100PCS/Tray.
- Single Use Only!! Dispose of the used tube according to your guideline.



Lithium Heparin

- Lithium Heparin Tube is coated with Lithium Heparin on the interior of the tube wall to inhibit blood clotting.
- The anticoagulant heparin activates anti-thrombins, thus blocking the coagulation cascade and producing whole blood/plasma specimen instead of clotted blood plus serum.
- Plasma obtained in Lithium Heparin Tube should be removed from the tube within 2 hours after blood collection.
- Invert Tube 5~8 times once blood specimen is collected.
- Storage: room temperature (20~25°C).
- Packing: 100PCS/Tray.
- Single Use Only!! Dispose of the used tube according to your guideline.



Sodium Heparin

- Sodium Heparin Tube is coated with Sodium Heparin on the interior of the tube wall to inhibit blood clotting.
- The anticoagulant heparin activates anti-thrombins, thus blocking the coagulation cascade and producing whole blood/plasma specimen instead of clotted blood plus serum.
- Plasma obtained in Sodium Heparin Tube should be removed from the tube within 2 hours after blood collection.
- Invert Tube 5~8 times once blood specimen is collected.
- Storage: room temperature (20~25°C).
- Packing: 100PCS/Tray.
- Single Use Only!! Dispose of the used tube according to your guideline.



Coagulation tube

- Coagulation Tube is filled with buffered tri-sodium citrate solution.
- The mixing ratio is 1 part citrate solution to 9 parts blood.
- Citrate concentration of either 0.109mol/L (3.2%) or 0.129mol/L (3.8%) is available. The choice of the concentration depends upon the ICSH recommended
- Coagulation Tube is mainly used for examination of coagulation parameters and can provide an excellent condition for the test of PT, APTT, FIB, TT. etc.
- Invert Tube 5~8 times once blood specimen is collected.
- Storage: room temperature (20~25°C).
- Packing: 100PCS/Tray.
- Single Use Only!! Dispose of the used tube according to your guideline.



K2EDTA

- K2EDTA Tube is coated with K2EDTA on the interior of the tube wall.
- The K2EDTA binds calcium ions, thus blocking the coagulation cascades. Erythrocytes, Leukocytes, Thrombocytes are stable in K2EDTA anti-coagulated blood for up to 24 hours.
- K2EDTA Tube can be used for direct sampling and analyzers without actually being opened.
- Invert Tube 5~8 times once blood specimen is collected.
- Storage: room temperature (20~25°C).
- Packing: 100PCS/Tray.
- Single Use Only!! Dispose of the used tube according to your guideline.



K3EDTA

- K3EDTA Tube is coated with K3EDTA on the interior of the tube wall.
- The K3EDTA binds calcium ions, thus blocking the coagulation cascades. Erythrocytes, Leukocytes, Thrombocytes are stable in K3EDTA anti-coagulated blood for up to 24 hours.
- K3EDTA Tube can be used for direct sampling and analyzers without actually being opened.
- Invert Tube 5~8 times once blood specimen is collected.
- Storage: room temperature (20~25°C).
- Packing: 100PCS/Tray.
- Single Use Only!! Dispose of the used tube according to your guideline.



ESR

- ESR Tube contains a 3.8% (0.129mol/L) buffered sodium citrate solution. The mixing ratio is 1 part Citrate solution to 9 parts blood.
- ESR tubes are used for the collection and transport of venous blood for blood sedimentation rate testing.
- ESR measurement refers to the Westergren method.
- Invert Tube 5~8 times once blood specimen is collected.
- Storage: room temperature (20~25°C).
- Packing: 100PCS/Tray.
- Single Use Only!! Dispose of the used tube according to your guideline.



Glucose

- Glucose Tube contains dispensed Sodium Fluoride/Sodium EDTA or Sodium Fluoride/Potassium Oxalate at the tube bottom.
- Glucose Tube as glycolysis in inhibitors is to preserve glucose when combined with an anticoagulant such as Sodium EDTA or Potassium Oxalate. Sodium Fluoride is effective in preserving glucose for up to 48 hours.
- Glucose Tube is used for determination of Blood Sugar and Lactic Acid.
- Invert Tube 5~8 times once blood specimen is collected.
- Storage: room temperature (20~25°C).
- Packing: 100PCS/Tray.
- Single Use Only!! Dispose of the used tube according to your guideline.



PKL VETERINARY LINE

**Clinical Chemistry
and Immunology**



**Molecular
Biology
and Quality
Controls**



**Hematology
Coagulation**



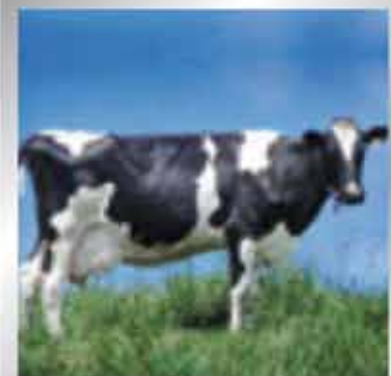
**Rapid Tests
Bacteriology**



**Plastic
Monouse**



**Small
equipment**



**Software and specific
values for animals**

** Complete Catalogue on request*

[illegible]



OTHER PRODUCTS

- BACTERIOLOGY
- CLINICAL CHEMISTRY REAGENTS
- CONTROLS
- COAGULATION
- ELECTROPHORESIS
- HEMATOLOGY COLORANTS
- IMMUNOFLUORESCENCE
- IMMUNOENZYMATIC
- PHOTOMETRIC FOOD ANALYSIS
- PLASTIC VACUUM TUBES
- RADIAL IMMUNODIFFUSION
- RAPID TESTS ON CARDS FOR HUMAN AND VETERINARY USE
- SEROLOGY
- WATER ANALYSIS
- ANALYTICAL AND TECHNICAL BALANCES
- CHEMICAL REAGENTS FOR LABORATORY USE
- CONDUCTIMETER
- LABORATORY GLASSWARE
- MICROPIPETTES
- PCR CABINETS
- pH METERS
- PLASTIC DISPENSABLES
- PLATES WITH ELECTROMAGNETIC STIRRING
- REFRACTOMETERS
- SPECTROPHOTOMETERS
- STIRRERS
- THERMOSTATS
- AND OTHERS

PARAMEDICAL srl

Via Antonio Amato, 24/26
84131 Salerno ITALY
Vat.: IT03117920656

Tel. +39 089.385027

Fax +39 089.3854479

amministrazione@paramedical.it

www.paramedical.it

