

**PKL**  
**PPC1040H** | Auto  
Hematology Analyzer

**| Specifications |**

**28 parameters** WBC,LYM%,MON%,NEU%,EOS%,BASO%,LYM#,MON#,NEU#,EOS#,BAS#,RBC,HGB,  
HCT,MCV,MCH,MCHC,RDW\_CV,RDW\_SD,PLT,MPV,PDW,PCT,P\_LCR,P\_LCC,  
RETIC\_ABS,RETIC, IRF  
2 Histograms for RBC and PLT  
2 Scatter grams: 5-part differential scatter gram  
Eosinophils and Moutrophils scatter gram  
2 3-D stereograms

**Principles of operation** WBC/DIFF: Flow Cytometry, Laser light multi-dimensional cell classification  
RBC/PLT Analysis: Impedance method  
HGB test: Cyanide-free reagent colorimetry

**Reagent** Diluent, Sheath,Detergent

**Sampling modes** Whole blood 20µL  
Pre-diluent 20µL

**Aperture Diameter** RBC/PLT 68µm

**Throughput** Whole blood up to 60 samples per hour  
Pre-diluent up to 60 samples per hour

**Data storage** Up to 200,000 sample results with grams

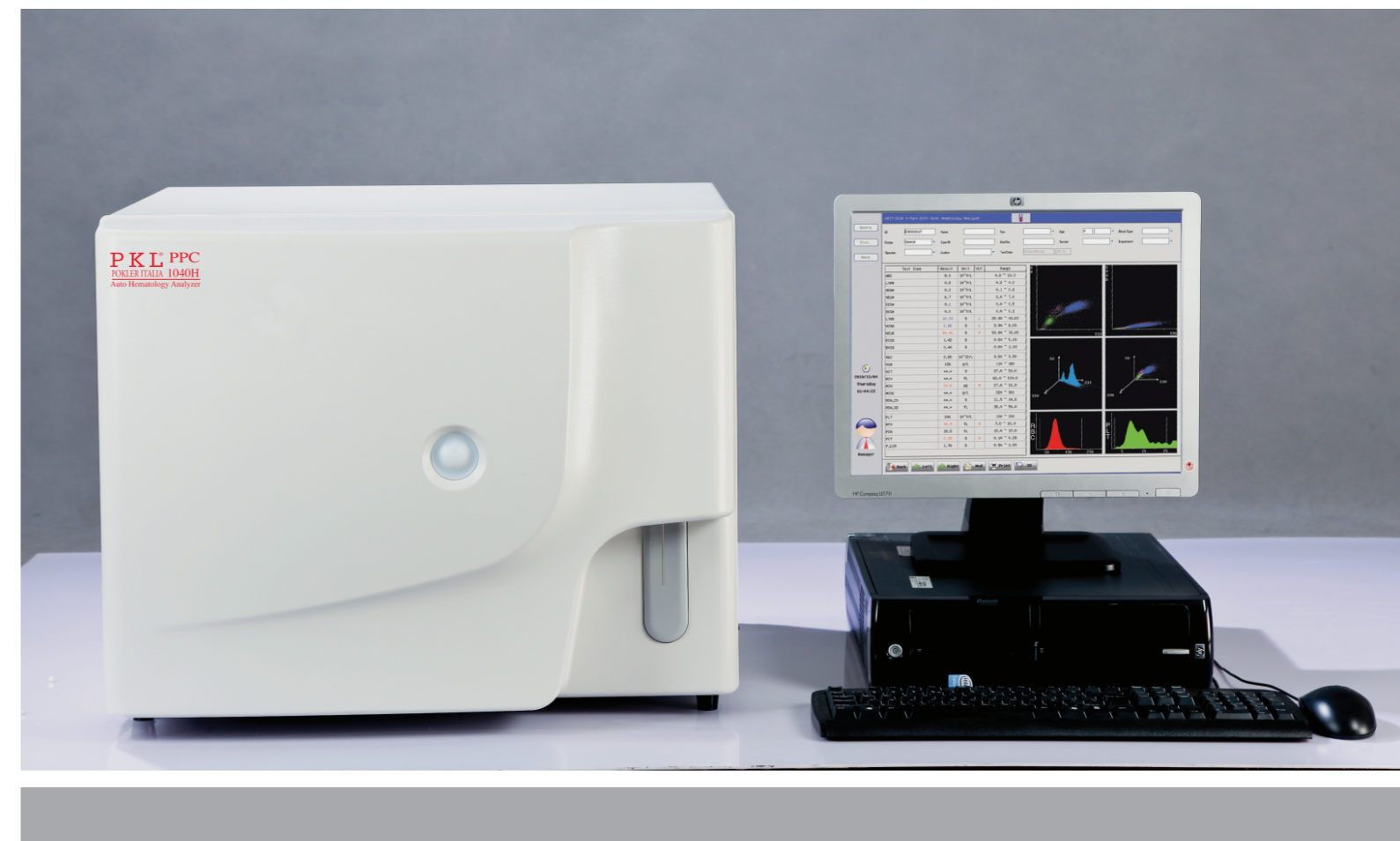
**Alarms** Error messages

**Display** PC display (14inch color TFT)

**Dimension** 598.5MM (L) × 585. 5MM (W) × 488. 5MM (H)

**Power** 220V,50/60Hz 600VA

**Weigh** 70kg



**PKL PPC1040**  
**5-Part-Diff**  
**Auto Hematology Analyzer**



**PARAMEDICAL srl**  
Via Irno snc,  
84098 Pontecagnano Faiano (SA) - ITALY  
Vat.: IT03117920656

Tel.+39 089.385027

Fax+39 089.3854479

amministrazione@paramedical.it

www.paramedical.it



ISO 9001:2008  
ISO 13485:2012

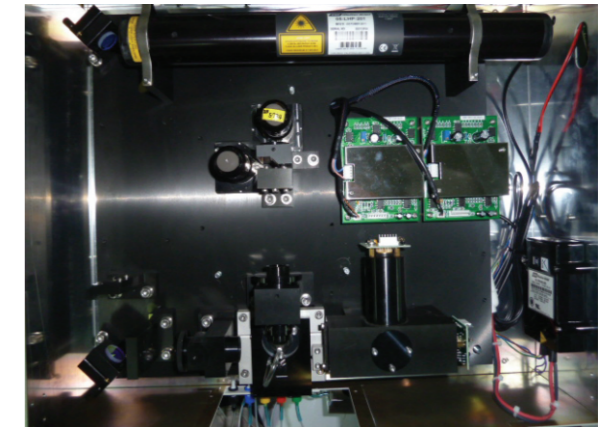
**PKL** | Auto  
**PPC1040H** | Hematology Analyzer



- Laser light multi-dimensional cell classification
- Resistant RBC mode
- Up to 60 samples per hour throughput
- WBC 5 part diff with sheath reagent only
- Support both whole blood and capillary blood samples
- Only three reagents for 25 parameters

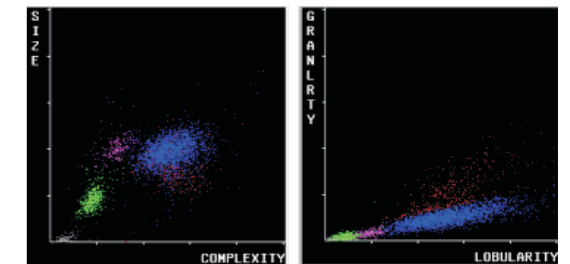
**Helium-neon (HE-NE)laser  
light scatter**

PKLPPC 1040H Auto Hematology Analyzer uses helium-neon laser for the flow cytometry system. Through calculations of different angles via laser scatters, the instrument provides complete analysis including cell size, granularity and complexity.

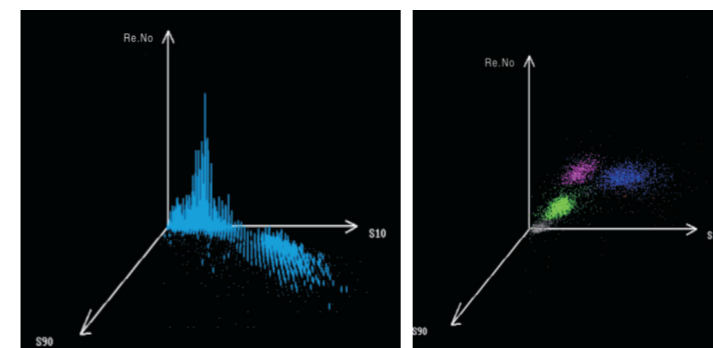


**One channel give complete  
differentiate WBC**

PKLPPC 1040H counts lymphocyte, monocyte, neutrophil, eosinophil and basophil in WOC channel.



**3D stereograms**



**High quality and easy  
maintenance syringe system**

